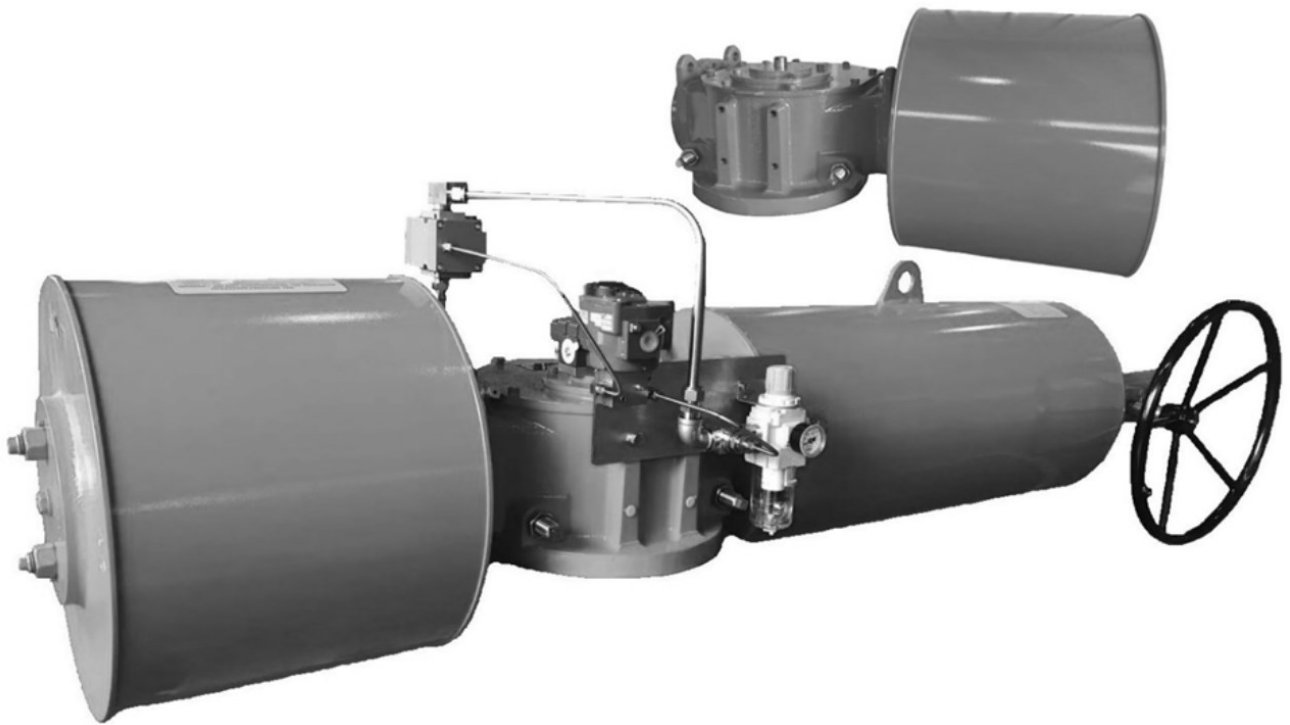


WZI FLOW CONTROL

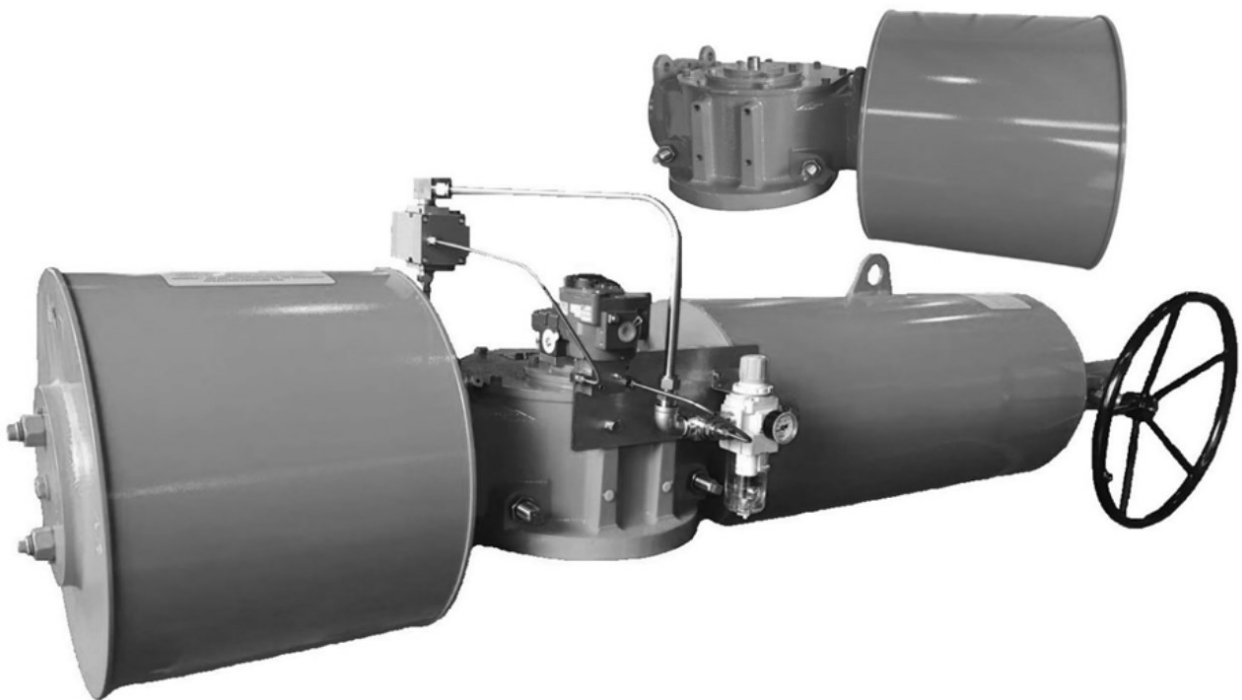


SERIES ZSH

SCOTCH YOKE ACTUATOR
FOR ROTARY VALVES

TABLE OF CONTENTS

FEATURES.....	ZSH 2
KEY COMPONENTS	ZSH 3
MATERIALS OF CONSTRUCTION.....	ZSH 4
MODULAR DESIGN.....	ZSH 5
TORQUE VALUES.....	ZSH 6-10
DIMENSIONS AND WEIGHTS.....	ZSH 11-14
CYLINDER VOLUMES.....	ZSH 14



SERIES ZSH FEATURES

- **Double Acting or Single Acting Spring Return** Scotch Yoke Rotary Actuator
- **Modular Design with Interchangeable Components** for pneumatic piston, spring return package, manual handwheel, hydraulic cylinder and handpump,
- Actuator Mounting to **ISO 5211** and Position Feedback to **VDI/VDE3845**
- **90 degree** rotation with **Bi-Directional** adjustable mechanical stops
- **Torque values** up to **110,000 Nm** with Spring Return or **240,000 Nm** with Double Acting Pneumatic
- **O-ring** Sealed Transmission Box for Service in **Corrosive Environments**
- Welded Spring Can Assembly for **Safe Handling and Maintenance**
- **Steel / Cast Iron** Construction or Optional **Stainless Steel**

ZSH SCOTCH YOKE ACTUATOR

KEY COMPONENTS

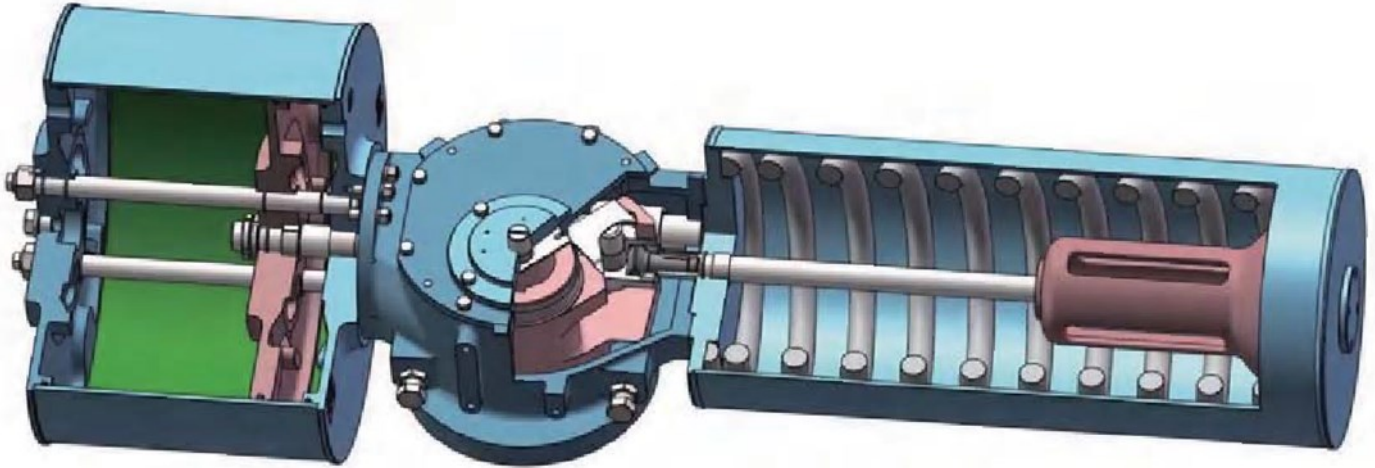


Table 1: Key Components

TYPE	90 Degree Rotation Scotch Yoke Actuator
CYLINDER BORE SIZES	5" (125mm) ~ 39" (1000mm)
TORQUE CHARACTERISTIC	Type B Body—Balanced End Torque
OPERATING PRESSURE	3 bar (43 psi) ~ 10 bar (145 psi)
TEMPERATURE RANGES	Standard Temperature, -20°C (-4°F) ~ 80°C (176°F) Low Temperature, -40°C (-40°F) ~ 80°C (176°F) High Temperature, -15°C (5°F) ~ 150°C (302°F)
INTERFACE MOUNTING	Compliant with ISO 5211 and with Namur Accessory Mounting
BEARINGS	DU Self Lubricating Bearings
O-RING	Dual Material—Rubber with PFA Coating for Low Friction and Long Service Life
CYLINDER COATING	PTFE Internal Coating for Corrosion Protection, Low Friction, and Long Service Life
CYLINDER TIE RODS	Internal Tie Rods <ul style="list-style-type: none"> Protected in Corrosive Service Environments Provide Additional Piston Guiding Reduce the Envelope Size and Weight of the Actuator

ZSH SCOTCH YOKE ACTUATOR

MATERIALS OF CONSTRUCTION

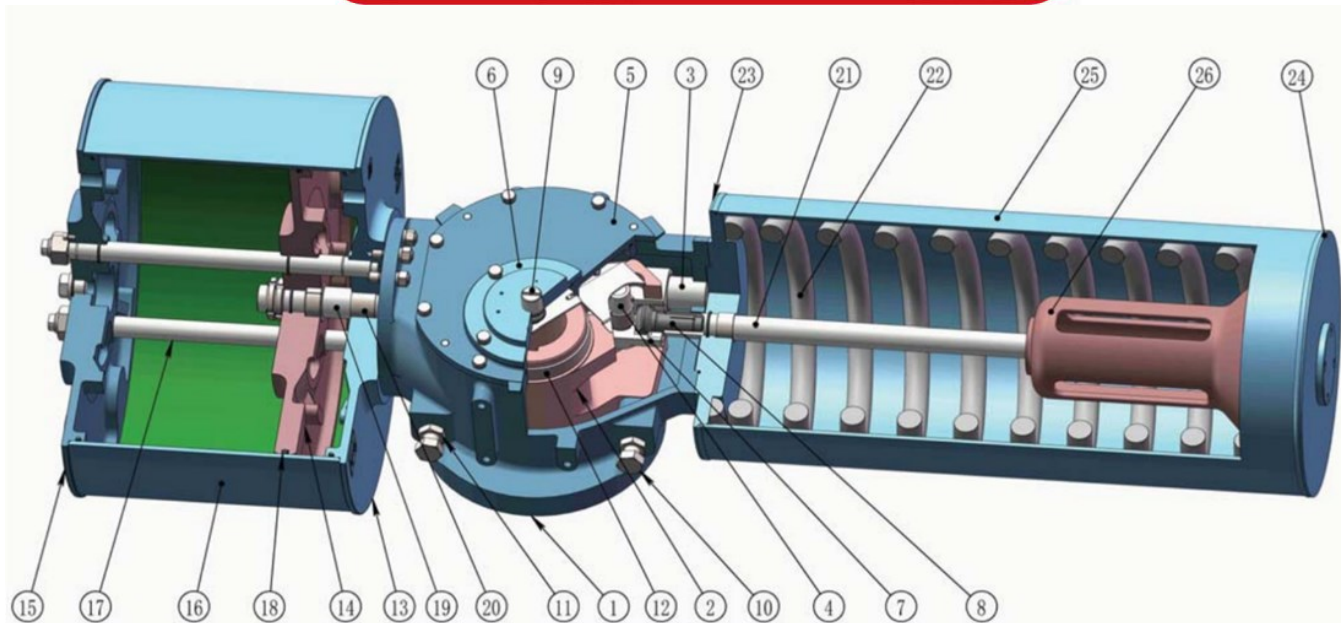


Table 2: Materials of Construction

Number	Name	Standard Materials
1	Actuator case	Ductile iron
2	Fork	Ductile iron
3	Guide rod	Alloy steel
4	Pin shaft	Alloy steel
5	Case cover	Ductile iron
6	End cover	Carbon steel
7	Guide block	Ductile iron
8	Joint	Alloy steel
9	Feedback axis	Stainless steel
10	Travel Stop Adjusting the screws	Stainless steel
11	Nut	Stainless steel
12	Fork bearing	DU Bearing
13	Inner cylinder head	Ductile iron
14	Piston	Ductile iron
15	Outer cylinder head	Ductile iron
16	Cylinder	Carbon steel with PTFE Coating
17	Cylinder Tie Rod and Guide	Alloy steel
18	Seals	Dual Material, Rubber and PFA Coating
19	Piston rod	Alloy steel
20	Piston rod bearings	DU Bearing
21	Rod	Alloy steel
22	Spring	Alloy steel
23	Inner spring cover	Carbon steel
24	Outer spring cover	Carbon steel
25	Spring cylinder	Carbon steel
26	Spring seat	Ductile iron

Notes:

1) For stainless steel material List, consult factory

MODULAR DESIGN

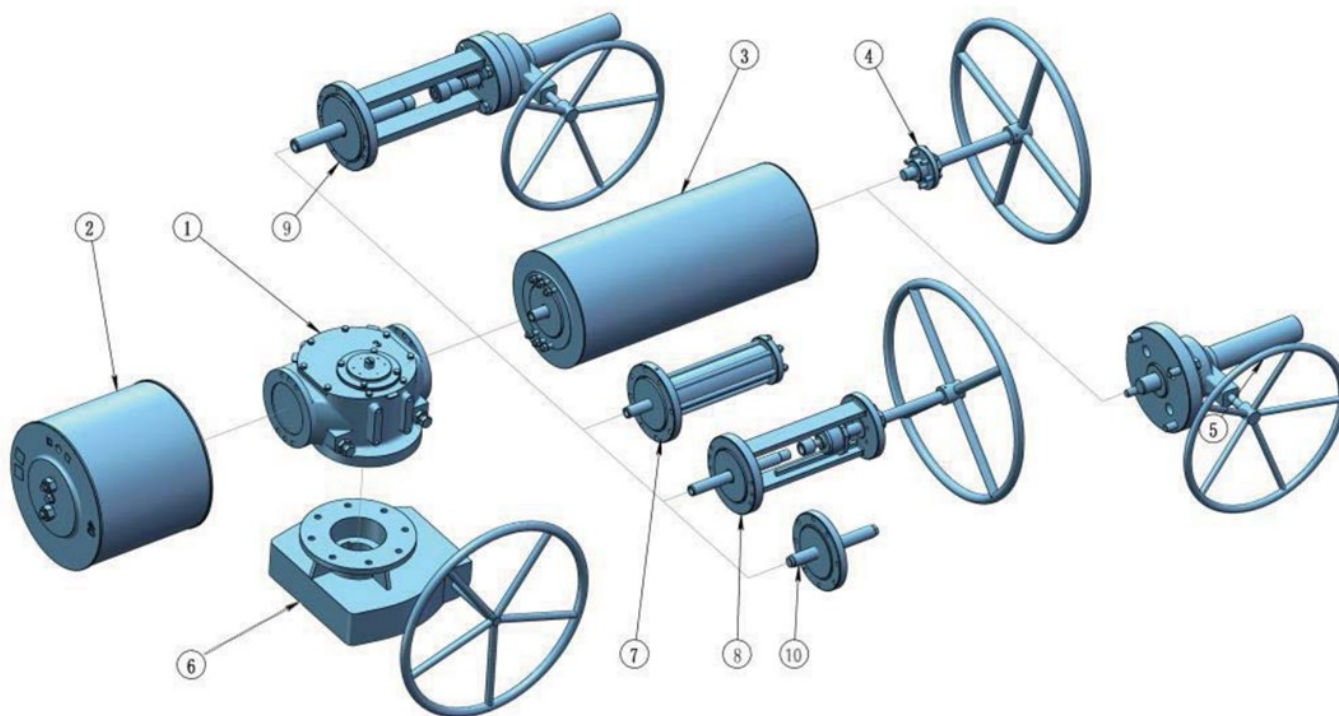


Table 3: Modular Design Component Options

ITEM	MODULE NAME	ITEM	MODULE NAME
1	Scotch Yoke Drive Body	6	Declutchable Manual Override
2	Pneumatic Cylinder Assembly	7	Hydraulic manual Override
3	Spring Can Assembly	8	Dual-acting wire rod module
4	Top Mounted Handwheel	9	Double-acting Handwheel
5	Top Mounted Gear Handwheel	10	Double Acting Gear Handwheel

Notes:

- 1) Additional accessories available including positioners, control panels, positioner indicators, limit switches, etc.
- 2) The Scotch Yoke Drive type B is supplied as standard with a balanced torque at both ends of the actuator rotation.
- 3) The Scotch Yoke Drive type C can be provided with an advantaged toqe offset at one end of the rotation, for use on valves with high seating or unseating torque requirements on or near the closed position. Consult Factory for torque values.

ACTUATOR TORQUE VALUES

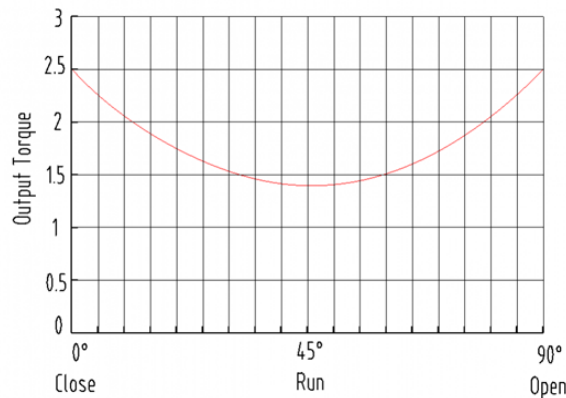


Table 4: Output Torque, ZSH-B Double Acting Actuator

Model	Output Torque (Nm) Air Pressure bar (psi)											
	3.5 (43)			4.0 (58)			5.0 (73)			6.0 (87)		
Rotation	0°	45°	90°	0°	45°	90°	0°	45°	90°	0°	45°	90°
ZSH-B04-125-DA	384	222	384	439	253	439	549	317	549	659	380	659
ZSH-B05-160-DA	728	417	728	832	477	832	1041	596	1041	1249	715	1249
ZSH-B06-201-DA	1269	670	1269	1451	766	1451	1814	958	1814	2154	1138	2154
ZSH-B08-221-DA	2000	1056	2000	2286	1207	2286	2857	1509	2857	3428	1810	3428
ZSH-B08-251-DA	2599	1372	2599	2970	1568	2970	3712	1960	3712	4455	2352	4455
ZSH-B1-281-DA	3836	2026	3836	4384	2315	4384	5480	2894	5480	6576	3473	6576
ZSH-B1-321-DA	5035	2659	5035	5754	3039	5754	7193	3798	7193	8631	4558	8631
ZSH-B1-351-DA	6039	3189	6039	6902	3644	6902	8627	4556	8627			
ZSH-B2-351-DA	7193	3798	7193	8220	4341	8220	10275	5426	10275	12330	6511	12330
ZSH-B2-401-DA	9440	4985	9440	10789	5697	10789	13486	7122	13486	16184	8546	16184
ZSH-B2-451-DA	11988	6330	11988	13700	7235	13700	17126	9043	17126			
ZSH-B3-451-DA	14306	7555	14306	16350	8634	16350	20438	10792	20438	24525	12951	24525
ZSH-B3-501-DA	17723	9359	17723	20255	10696	20255	25318	13369	25318	30382	16043	30382
ZSH-B3-561-DA	22297	11774	22297	25483	13456	25483	31854	16820	31854	38224	20184	38224
ZSH-B3-601-DA	25635	13537	25635	29297	15470	29297	36621	19338	36621			
ZSH-B4-601-DA	30797	16263	30797	35197	18586	35197	43996	23232	43996	52796	27879	52796
ZSH-B4-631-DA	33986	17946	33986	38841	20510	38841	48552	25638	48552	58262	30765	58262
ZSH-B4-502-DA	42584	22487	42584	48668	25699	48668	60835	32124	60835			
ZSH-B4-701-DA	42031	22195	42031	48036	25365	48036	60044	31707	60044			
ZSH-B4-562-DA	53576	28291	53576	61230	32332	61230						
ZSH-B4-801-DA	54993	29039	54993	62849	33188	62849						
ZSH-B5-701-DA	50399	26614	50399	57599	30416	57599	71999	38019	71999	86399	45623	86399
ZSH-B5-562-DA	64145	33872	64145	73308	38711	73308	91635	48388	91635	109963	58066	109963
ZSH-B5-801-DA	65984	34843	65984	75410	39820	75410	94263	49776	94263	113115	59731	113115
ZSH-B5-602-DA	73786	38963	73786	84327	44529	84327	105409	55661	105409	126491	66794	126491
ZSH-B5-632-DA	81454	43012	81454	93090	49156	93090	116362	61446	116362			
ZSH-B5-902-DA	83646	44169	83646	95595	50479	95595	119494	63099	119494			
ZSH-B5-702-DA	100799	53227	100799	115199	60831	115199						
ZSH-B5-1001-DA	103386	54593	103386	118155	62392	118155						
ZSH-B6-901-DA	112390	59348	112390	128446	67826	128446	160558	84783	160558	192669	101740	192669
ZSH-B6-702-DA	135271	71430	135271	154596	81635	154596	193245	102043	193245	231894	122452	231894
ZSH-B6-1001-DA	138964	73380	138964	158816	83863	158816	198519	104829	198519	238223	125795	238223
ZSH-B6-802-DA	177229	93586	177229	202547	106956	202547	253184	133695	253184			
ZSH-B6-902-DA	224781	118696	224781	256893	135653	256893						

Notes:

1) For torque in ft-lb, multiple Nm by 0.73756

ACTUATOR TORQUE VALUES

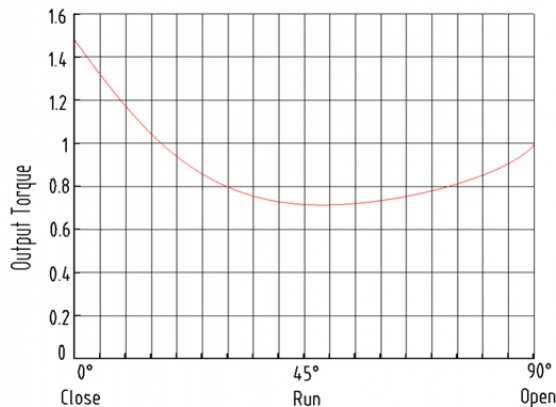
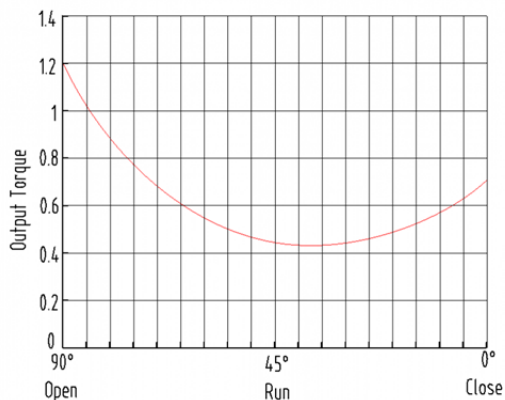


Table 5: Output Torque, ZSH-B Series Actuator with Spring Return (FC)

Model	Air to Spring			Spring			Air to Spring			Spring			Air to Spring			Spring		
	4.0 bar (58psi)						5.0 bar (73psi)						6.0 bar (87 psi)					
	0°	45°	90°	90°	45°	0°	0°	45°	90°	90°	45°	0°	0°	45°	90°	90°	45°	0°
ZSH-B04-125-SRC4	269	105	125	292	110	148	373	160	230	292	110	148	478	213	334	292	110	148
ZSH-B04-125-SRC5							336	132	160	362	137	186	441	186	264	362	137	186
ZSH-B04-125-SRC6													404	158	188	438	165	222
ZSH-B05-160-SRC4	511	199	241	549	207	279	710	300	440	549	207	279	907	401	638	549	207	279
ZSH-B05-160-SRC5							640	248	306	683	258	349	838	349	504	683	258	349
ZSH-B05-160-SRC6													769	298	365	822	310	418
ZSH-B06-201-SRC4	934	383	549	902	383	517	1296	575	911	902	383	517	1659	766	1274	902	383	517
ZSH-B06-201-SRC5							1167	479	686	1128	479	646	1530	670	1049	1128	479	646
ZSH-B06-201-SRC6													1391	567	806	1370	582	785
ZSH-B06-221-SRC4	1116	452	635	1128	479	646	1557	685	1076	1128	479	646	1997	917	1516	1128	479	646
ZSH-B06-221-SRC5							1418	582	833	1370	582	785	1858	814	1274	1370	582	785
ZSH-B06-221-SRC6													1701	698	1000	1644	698	942
ZSH-B08-221-SRC4	1449	587	834	1452	620	837	2020	889	1405	1452	620	837	2591	1190	1976	1452	620	837
ZSH-B08-221-SRC5							1830	748	1075	1782	761	1027	2401	1049	1646	1782	761	1027
ZSH-B08-221-SRC6													2132	850	1180	2248	960	1296
ZSH-B08-251-SRC4	1943	807	1188	1782	761	1027	2685	1199	1930	1782	761	1027	3428	1591	2673	1782	761	1027
ZSH-B08-251-SRC5							2416	1000	1464	2248	960	1296	3159	1392	2207	2248	960	1296
ZSH-B08-251-SRC6													2828	1147	1633	2822	1205	1627
ZSH-B08-281-SRC4	2445	1016	1493	2248	960	1296	3381	1509	2429	2248	960	1296	4316	2003	3364	2248	960	1296
ZSH-B08-281-SRC5							3050	1264	1855	2822	1205	1627	3985	1758	2790	2822	1205	1627
ZSH-B08-281-SRC6													3612	1481	2142	3470	1482	2000
ZSH-B1-281-SRC4	2821	1157	1670	2714	1158	1563	3917	1736	2766	2714	1158	1563	5013	2315	3862	2714	1158	1563
ZSH-B1-281-SRC5							3478	1411	2004	3476	1483	2002	4574	1990	3100	3476	1483	2002
ZSH-B1-281-SRC6													4116	1651	2305	4271	1822	2460
ZSH-B1-321-SRC4	3752	1556	2278	3476	1483	2002	5191	2315	3717	3476	1483	2002	6629	3075	5155	3476	1483	2002
ZSH-B1-321-SRC5							4733	1976	2922	4271	1822	2460	6171	2736	4360	4271	1822	2460
ZSH-B1-321-SRC6													5408	2171	3034	5597	2387	3223
ZSH-B1-351-SRC4	4442	1822	2631	4271	1822	2460	6167	2734	4356	4271	1822	2460	7892	3645	6081	4271	1822	2460
ZSH-B1-351-SRC5							5404	2169	3030	5597	2387	3223	7129	3080	4755	5597	2387	3223
ZSH-B1-351-SRC6													6323	2483	3356	6996	2984	4029

Notes:

1) For torque in ft-lb, multiple Nm by 0.73756

ACTUATOR TORQUE VALUES

Table 5: Output Torque, ZSH-B Series Actuator with Spring Return (FC) continued

Model	Air to Spring			Spring			Air to Spring			Spring			Air to Spring			Spring		
	4.0 bar (58psi)						5.0 bar (73psi)						6.0 bar (87 psi)					
	0°	45°	90°	90°	45°	0°	0°	45°	90°	90°	45°	0°	0°	45°	90°	90°	45°	0°
ZSH-B1-401-SRC4	5819	2388	3445	5597	2387	3223	8080	3582	5706	5597	2387	3223	10340	4775	7966	5597	2387	3223
ZSH-B1-401-SRC5							7274	2985	4307	6996	2984	4029	9534	4178	6567	6996	2984	4029
ZSH-B1-401-SRC6													8729	3581	5168	8395	3581	4834
ZSH-B2-401-SRC4	6943	2848	4110	6679	2849	3846	9640	4273	6807	6679	2849	3846	12338	5697	9505	6679	2849	3846
ZSH-B2-401-SRC5							8603	3505	5005	8481	3617	4883	11301	4929	7703	8481	3617	4883
ZSH-B2-401-SRC6													10080	4024	5582	10602	4522	6104
ZSH-B2-451-SRC4	8817	3618	5219	8481	3617	4883	12243	5426	8645	8481	3617	4883	15668	7235	12070	8481	3617	4883
ZSH-B2-451-SRC5							11022	4521	6524	10602	4522	6104	14447	6330	9949	10606	4522	6104
ZSH-B2-451-SRC6													13226	5426	7829	12722	5426	7325
ZSH-B3-451-SRC4	10522	4317	6232	10118	4317	5828	14610	6475	10320	10118	4317	5828	18697	8634	14407	10118	4317	5828
ZSH-B3-451-SRC5							13186	5420	7847	12591	5372	7252	17273	7579	11934	12591	5372	7252
ZSH-B3-451-SRC6													15500	6266	8857	15668	6685	9025
ZSH-B3-501-SRC4	13003	5324	7664	12591	5372	7252	18066	7997	12727	12591	5372	7252	23130	10671	17791	12591	5372	7252
ZSH-B3-501-SRC5							16293	6684	9650	15668	6685	9025	21357	9358	14714	15668	6685	9025
ZSH-B3-501-SRC6													19028	7633	10671	19711	8410	11354
ZSH-B3-561-SRC4	16458	6771	9815	15668	6685	9025	22829	10135	16186	15668	6685	9025	29199	13499	22556	15668	6685	9025
ZSH-B3-561-SRC5							20500	8410	12143	19711	8410	11354	26870	11774	18513	19711	8410	11354
ZSH-B3-561-SRC6													24600	10092	14570	23654	10092	13624
ZSH-B3-631-SRC4	20977	8662	12619	19711	8410	11354	29059	12930	20702	19711	8410	11354	37142	17198	28784	19711	8410	11354
ZSH-B3-631-SRC5							26788	11248	16759	23654	10092	13624	34871	15516	24842	23654	10092	13624
ZSH-B3-631-SRC6													31210	12804	18486	30010	12804	17286
ZSH-B4-631-SRC4	24997	10255	14784	24057	10255	13844	34708	15383	24495	24057	10255	13844	44418	20510	34205	24057	10255	13844
ZSH-B4-631-SRC5							31246	12819	18481	30071	12819	17306	40956	17946	28191	30071	12819	17306
ZSH-B4-631-SRC6													35860	14171	19335	38927	16594	22402
ZSH-B4-701-SRC4	30730	12546	17964	30071	12819	17306	42739	18888	29973	30071	12819	17306	54748	25229	41982	30071	12819	17306
ZSH-B4-701-SRC5							37643	15113	21118	38927	16594	22402	49651	21454	33126	38927	16594	22402
ZSH-B4-701-SRC6													44052	17306	23396	48657	20742	28002
ZSH-B4-801-SRC4	40447	16594	23922	38927	16594	22402	56160	24891	39635	38927	16594	22402	71872	33188	55347	38927	16594	22402
ZSH-B4-801-SRC5							50560	20743	29904	48657	20742	28002	66272	29040	45616	48657	20742	28002
ZSH-B4-801-SRC6													60671	24891	35884	58390	24891	33603
ZSH-B5-801-SRC4	48531	19910	28703	46707	19910	26879	67384	29865	47556	46707	19910	26879	86236	39820	66408	46707	19910	26879
ZSH-B5-801-SRC5							60189	24536	35054	59209	25240	34074	79041	34491	53906	59209	25240	34074
ZSH-B5-801-SRC6													70523	28181	39104	74011	31550	42592
ZSH-B5-901-SRC4	61522	25240	36387	59209	25240	34074	85421	37860	60285	59209	25240	34074	109319	50479	84184	59209	25240	34074
ZSH-B5-901-SRC5							76902	31550	45483	74011	31550	42592	100801	44169	69382	74011	31550	42592
ZSH-B5-901-SRC6													92283	37860	54580	88813	37860	51110
ZSH-B6-801-SRC4	65176	26739	38729	62545	26739	36098	90495	40108	64047	62545	26739	36098	115813	53478	89365	62545	26739	36098
ZSH-B6-801-SRC5							80809	32934	47266	79327	33913	45783	106128	46304	72584	79327	33913	45783
ZSH-B6-801-SRC6													94682	37825	52752	99158	42392	57229
ZSH-B6-901-SRC4	82663	33913	49120	79327	33913	45783	114775	50870	81231	79327	33913	45783	146887	67826	113343	79327	33913	45783
ZSH-B6-901-SRC5							103329	42392	61400	99158	42392	57229	135441	59348	93511	99158	42392	57229
ZSH-B6-901-SRC6													121910	49325	70067	122603	52414	70759
ZSH-B6-1001-SRC4	101587	41472	59657	99158	42392	57229	141291	62437	99361	99158	42392	57229	180995	83403	139065	99158	42392	57229
ZSH-B6-1001-SRC5							127760	52414	75917	122603	52414	70759	167464	73380	115621	122603	52414	70759
ZSH-B6-1001-SRC6													153312	62897	91100	147123	62897	84911

Notes:

1) For torque in ft-lb, multiple Nm by 0.73756

ACTUATOR TORQUE VALUES

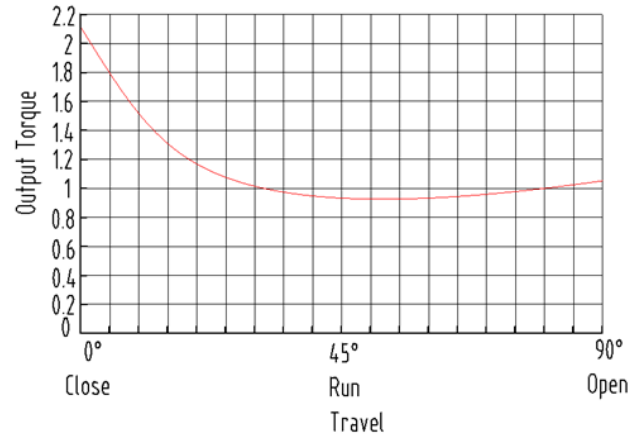
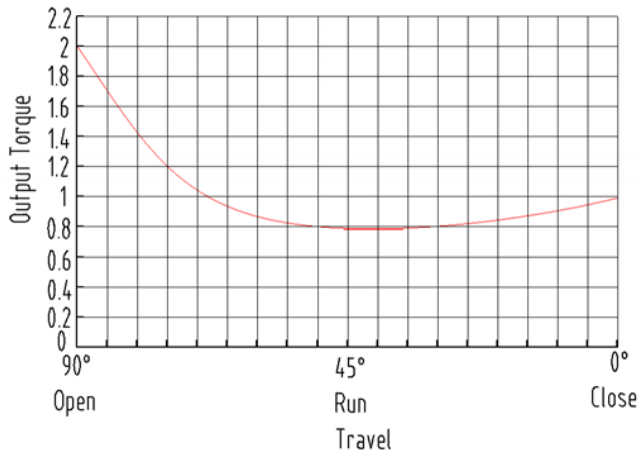


Table 6: Output Torque, ZSH-B Series Actuator with Spring Return (F0)

Model	Air to Spring			Spring			Air to Spring			Spring			Air to Spring			Spring		
	4.0 bar (58psi)						5.0 bar (73psi)						6.0 bar (87 psi)					
	0°	45°	90°	90°	45°	0°	0°	45°	90°	90°	45°	0°	0°	45°	90°	90°	45°	0°
ZSH-B04-125-SRO4	269	105	125	292	110	148	373	160	230	292	110	148	478	213	334	292	110	148
ZSH-B04-125-SRO5							336	132	160	362	137	186	440	186	264	362	137	186
ZSH-B04-125-SRO6													404	158	188	438	165	222
ZSH-B05-160-SRO4	511	199	241	549	207	279	710	300	440	549	207	279	907	401	638	549	207	279
ZSH-B05-160-SRO5							640	248	306	683	258	349	838	349	504	683	258	349
ZSH-B05-160-SRO6													769	298	365	822	310	418
ZSH-B06-201-SRO4	934	383	549	902	383	517	1296	575	911	902	383	517	1659	766	1274	902	383	517
ZSH-B06-201-SRO5							1167	479	686	1128	479	646	1530	670	1049	1128	479	646
ZSH-B06-201-SRO6													1391	567	806	1370	582	785
ZSH-B06-221-SRO4	1116	452	635	1128	479	646	1557	685	1076	1128	479	646	1997	917	1516	1128	479	646
ZSH-B06-221-SRO5							1418	582	833	1370	582	785	1858	814	1274	1370	582	785
ZSH-B06-221-SRO6													1701	698	1000	1644	698	942
ZSH-B08-221-SRO4	1449	587	834	1452	620	837	2020	889	1405	1452	620	837	2591	1190	1976	1452	620	837
ZSH-B08-221-SRO5							1830	748	1075	1782	761	1027	2401	1049	1646	1782	761	1027
ZSH-B08-221-SRO6													2132	850	1180	2248	960	1296
ZSH-B08-251-SRO4	1943	807	1188	1782	761	1027	2685	1199	1930	1782	761	1027	3428	1591	2673	1782	761	1027
ZSH-B08-251-SRO5							2416	1000	1464	2248	960	1296	3159	1392	2207	2248	960	1296
ZSH-B08-251-SRO6													2828	1147	1633	2822	1205	1627
ZSH-B08-281-SRO4	2445	1016	1493	2248	960	1296	3381	1509	2429	2248	960	1296	4316	2003	3364	2248	960	1296
ZSH-B08-281-SRO5							3050	1264	1855	2822	1205	1627	3985	1758	2790	2822	1205	1627
ZSH-B08-281-SRO6													3612	1481	2142	3470	1482	2000
ZSH-B1-281-SRO4	2821	1157	1670	2714	1158	1563	3917	1736	2766	2714	1158	1563	5013	2315	3862	2714	1158	1563
ZSH-B1-281-SRO5							3478	1411	2004	3476	1483	2002	4574	1990	3100	3476	1483	2002
ZSH-B1-281-SRO6													4116	1651	2305	4271	1822	2460
ZSH-B1-321-SRO4	3752	1556	2278	3476	1483	2002	5191	2315	3717	3476	1483	2002	6629	3075	5155	3476	1483	2002
ZSH-B1-321-SRO5							4733	1976	2922	4271	1822	2460	6171	2736	4360	4271	1822	2460
ZSH-B1-321-SRO6													5408	2171	3034	5597	2387	3223
ZSH-B1-351-SRO4	4442	1822	2631	4271	1822	2460	6167	2734	4356	4271	1822	2460	7892	3645	6081	4271	1822	2460
ZSH-B1-351-SRO5							5404	2169	3030	5597	2387	3223	7129	3080	4755	5597	2387	3223
ZSH-B1-351-SRO6													6323	2483	3356	6996	2984	4029

Notes:

1) For torque in ft-lb, multiple Nm by 0.73756

ACTUATOR TORQUE VALUES

Table 6: Output Torque, ZSH-B Series Actuator with Spring Return (F0) continued

Model	Air to Spring		Spring				Air to Spring		Spring				Air to Spring		Spring			
	4.0 bar (58psi)						5.0 bar (73psi)						6.0 bar (87 psi)					
	0°	45°	90°	90°	45°	0°	0°	45°	90°	90°	45°	0°	0°	45°	90°	90°	45°	0°
ZSH-B1-401-SRO4	5819	2388	3445	5597	2387	3223	8080	3582	5706	5597	2387	3223	10340	4775	7966	5597	2387	3223
ZSH-B1-401-SRO5							7274	2985	4307	6996	2984	4029	9534	4178	6567	6996	2984	4029
ZSH-B1-401-SRO6													8729	3581	5168	8395	3581	4834
ZSH-B2-401-SRO4	6943	2848	4110	6679	2849	3846	9640	4273	6807	6679	2849	3846	12338	5697	9505	6679	2849	3846
ZSH-B2-401-SRO5							8603	3505	5005	8481	3617	4883	11301	4929	7703	8481	3617	4883
ZSH-B2-401-SRO6													10080	4024	5582	10602	4522	6104
ZSH-B2-451-SRO4	8817	3618	5219	8481	3617	4883	12243	5426	8645	8481	3617	4883	15668	7235	12070	8481	3617	4883
ZSH-B2-451-SRO5							11022	4521	6524	10602	4522	6104	14447	6330	9949	10602	4522	6104
ZSH-B2-451-SRO6													13226	5426	7829	12722	5426	7325
ZSH-B3-451-SRO4	10522	4317	6232	10118	4317	5828	14610	6475	10320	10118	4317	5828	18697	8634	14407	10118	4317	5828
ZSH-B3-451-SRO5							13186	5420	7847	12591	5372	7252	17273	7579	11934	12591	5372	7252
ZSH-B3-451-SRO6													15500	6266	8857	15668	6685	9025
ZSH-B3-501-SRO4	13003	5324	7664	12591	5372	7252	18066	7997	12727	12591	5372	7252	23130	10671	17791	12591	5372	7252
ZSH-B3-501-SRO5							16293	6684	9650	15668	6685	9025	21357	9358	14714	15668	6685	9025
ZSH-B3-501-SRO6													19028	7633	10671	19711	8410	11354
ZSH-B3-561-SRO4	16458	6771	9815	15668	6685	9025	22829	10135	16186	15668	6685	9025	29199	13499	22556	15668	6685	9025
ZSH-B3-561-SRO5							20500	8410	12413	19711	8410	11354	26870	11774	18513	19711	8410	11354
ZSH-B3-561-SRO6													24600	10092	14570	23654	10092	13624
ZSH-B3-631-SRO4	20977	8662	12619	19711	8410	11354	29059	12930	20702	19711	8410	11354	37142	17198	28784	19711	8410	11354
ZSH-B3-631-SRO5							26788	11248	16759	23654	10092	13264	34871	15516	24842	23654	10092	13624
ZSH-B3-631-SRO6													31210	12804	18486	30010	12804	17286
ZSH-B4-631-SRO4	24997	10255	14784	24057	10255	13844	34708	15383	24495	24057	10255	13844	44418	20510	34205	24057	10255	13844
ZSH-B4-631-SRO5							31246	12819	18481	30071	12819	17306	40956	17946	28191	30071	12819	17306
ZSH-B4-631-SRO6													35860	14171	19335	38927	16594	22402
ZSH-B4-701-SRO4	30730	12546	17964	30071	12819	17306	42739	18888	29973	30071	12819	17306	54748	25229	41982	30071	12819	17306
ZSH-B4-701-SRO5							37643	15113	21118	38927	16594	22402	49651	21454	33126	38927	16594	22402
ZSH-B4-701-SRO6													44052	17306	23396	48657	20742	28002
ZSH-B4-801-SRO4	40447	16594	23922	38927	16594	22402	56160	24891	39635	38927	16594	22402	71872	33188	55347	38927	16594	22402
ZSH-B4-801-SRO5							50560	20743	29904	48657	20742	28002	66272	29040	45616	48657	20742	28002
ZSH-B4-801-SRO6													60671	24891	35884	58390	24891	33603
ZSH-B5-801-SRO4	48531	19910	28703	46707	19910	26879	67384	29865	47556	46707	19910	26879	86236	39820	66408	46707	19910	26879
ZSH-B5-801-SRO5							60189	24536	35054	59209	25240	34074	79041	34491	53906	59209	25240	34074
ZSH-B5-801-SRO6													70523	28181	39104	74011	31550	42592
ZSH-B5-901-SRO4	61522	25240	36387	59209	25240	34074	85421	37860	60285	59209	25240	34074	109319	50479	84184	59209	25240	34074
ZSH-B5-901-SRO5							76902	31550	45483	74011	31550	42592	100801	44169	69382	74011	31550	42592
ZSH-B5-901-SRO6													92283	37860	54580	88813	37860	51110
ZSH-B6-801-SRO4	65176	26739	38729	62545	26739	36098	90495	40108	64047	62545	26739	36098	115813	53478	89365	62545	26739	36098
ZSH-B6-801-SRO5							80809	32934	47266	79327	33913	45783	106128	46304	72584	79327	33913	45783
ZSH-B6-801-SRO6													94682	37825	52752	99158	42392	57229
ZSH-B6-901-SRO4	82663	33913	47120	79327	33913	45783	114775	50870	81231	79327	33913	45783	146887	67826	113343	79327	33913	45783
ZSH-B6-901-SRO5							103329	42392	61400	99158	42392	57229	135441	59348	93511	99158	42392	57229
ZSH-B6-901-SRO6													121910	49325	70067	122603	52414	70759
ZSH-B6-1001-SRO4	101587	41472	59657	99158	42392	57229	141291	62437	99361	99158	42392	57229	180995	83403	139065	99158	42392	57229
ZSH-B6-1001-SRO5							127760	52414	75917	122603	52414	70759	167464	73380	115621	122603	52414	70759
ZSH-B6-1001-SRO6													153312	62897	91100	147123	62897	84911

Note: For imperial dimensions and threading, consult the Factory

ACTUATOR DIMENSIONS

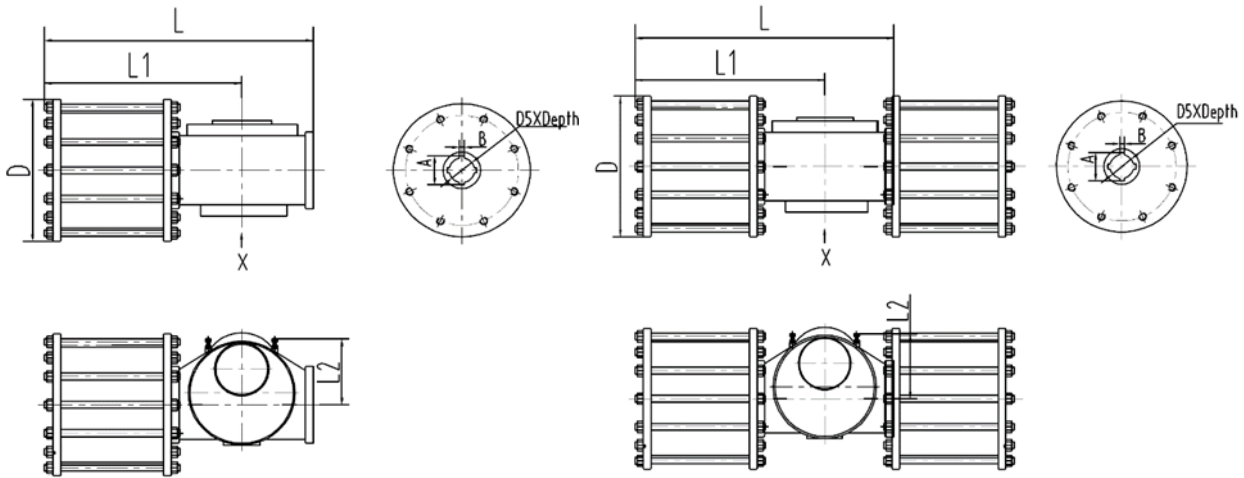


Table 7: ZSH-B Double Acting Actuator Dimensions

Model	L	L1	L2	H	D	D5	A	B	Connecting Flange	Air Connection
	mm								ISO 5211	
ZSH-B06-201-DA	675	505	180	212	225*225	φ48*65	51.8	14	F14	3/8 " G(NPT)
ZSH-B08-221-DA	815	605	200	237	250*250	φ60*100	64.4	18	F16	1/2 " G(NPT)
ZSH-B08-251-DA	815	605	200	237	280*280	φ60*100	64.4	18	F16	1/2 " G(NPT)
ZSH-B1-281-DA	925	680	225	246	310*310	φ72*120	76.9	20	F25/F16	1/2 " G(NPT)
ZSH-B1-321-DA	905	660	225	246	φ395	φ72*120	76.9	20	F25/F16	1/2 " G(NPT)
ZSH-B1-351-DA	905	660	225	246	φ430	φ72*120	76.9	20	F25/F16	3/4 " G(NPT)
ZSH-B2-351-DA	1055	775	285	269	φ430	φ100*150	106.4	28	F30/F25	3/4 " G(NPT)
ZSH-B2-401-DA	1055	775	285	269	φ500	φ100*150	106.4	28	F30/F25	1 " G(NPT)
ZSH-B2-451-DA	1055	775	285	269	φ550	φ100*150	106.4	28	F30/F25	1 " G(NPT)
ZSH-B3-451-DA	1250	915	330	310	φ550	φ160*200	169.4	40	F35/F30	1 " G(NPT)
ZSH-B3-501-DA	1250	915	330	310	φ600	φ160*200	169.4	40	F35/F30	1 1/4 " G(NPT)
ZSH-B3-561-DA	1250	915	330	310	φ660	φ160*200	169.4	40	F35/F30	1 1/4 " G(NPT)
ZSH-B3-601-DA	1250	915	330	310	φ700	φ160*200	169.4	40	F35/F30	1 1/4 " G(NPT)
ZSH-B4-601-DA	1450	1050	412	340	φ700	φ180*220	190.4	45	F40	1 1/4 " G(NPT)
ZSH-B4-631-DA	1450	1050	412	340	φ730	φ180*220	190.4	45	F40	1 1/2 " G(NPT)
ZSH-B4-701-DA	1450	1050	412	340	φ810	φ180*220	190.4	45	F40	1 1/2 " G(NPT)
ZSH-B4-801-DA	1450	1050	412	340	φ910	φ180*220	190.4	45	F40	1 1/2 " G(NPT)
ZSH-B4-502-DA	2120	1050	412	340	φ600	φ180*220	190.4	45	F40	1 1/4 " G(NPT)
ZSH-B4-562-DA	2120	1050	412	340	φ660	φ180*220	190.4	45	F40	1 1/4 " G(NPT)
ZSH-B5-701-DA	1690	1230	486	420	φ810	φ220*250	231.4	50	F48/F40	1 1/2 " G(NPT)
ZSH-B5-801-DA	1690	1230	486	420	φ910	φ220*250	231.4	50	F48/F40	1 1/2 " G(NPT)
ZSH-B5-901-DA	1690	1230	486	420	φ1010	φ220*250	231.4	50	F48/F40	2 " G(NPT)
ZSH-B5-1001-DA	1690	1230	486	420	φ1110	φ220*250	231.4	50	F48/F40	2 " G(NPT)
ZSH-B5-562-DA	2456	1230	486	420	φ660	φ220*250	231.4	50	F48/F40	1 1/4 " G(NPT)
ZSH-B5-602-DA	2456	1230	486	420	φ700	φ220*250	231.4	50	F48/F40	1 1/4 " G(NPT)
ZSH-B5-632-DA	2456	1230	486	420	φ730	φ220*250	231.4	50	F48/F40	1 1/2 " G(NPT)
ZSH-B5-702-DA	2456	1230	486	420	φ810	φ220*250	231.4	50	F48/F40	1 1/2 " G(NPT)
ZSH-B6-901-DA	2145	1555	658	490	φ1010	φ280*320	292.4	63	F60/F48	2 " G(NPT)
ZSH-B6-1001-DA	2145	1555	658	490	φ1110	φ280*320	292.4	63	F60/F48	2 " G(NPT)
ZSH-B6-702-DA	3100	1555	658	490	φ810	φ280*320	292.4	63	F60/F48	1 1/2 " G(NPT)
ZSH-B6-802-DA	3100	1555	658	490	φ910	φ280*320	292.4	63	F60/F48	1 1/2 " G(NPT)
ZSH-B6-902-DA	3100	1555	658	490	φ1010	φ280*320	292.4	63	F60/F48	2 " G(NPT)

Note: For imperial dimensions and threading, consult the Factory

ACTUATOR DIMENSIONS

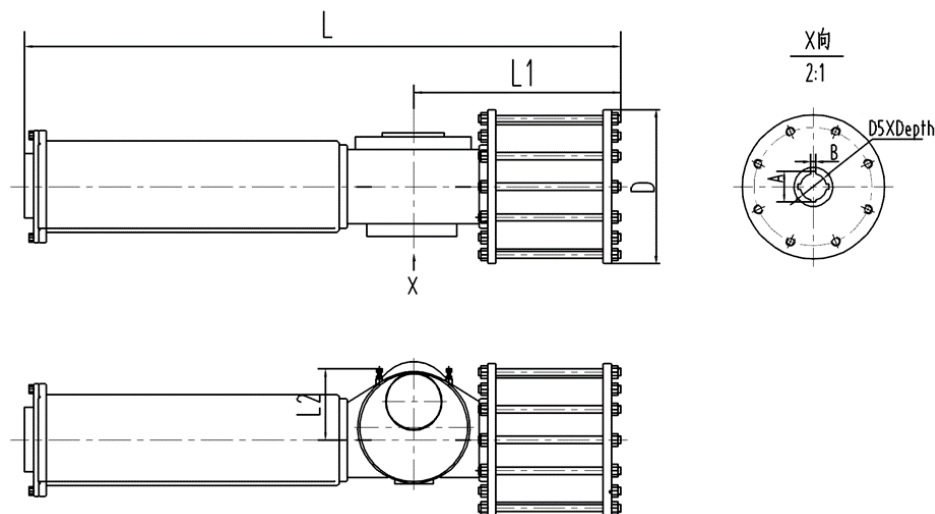


Table 8: ZSH-B FC(O) Spring Return Actuator Dimensions

MODEL	L	L1	L2	H	D	D5xDEPTH	A	B	Connecting Flange	Air Connection
	mm								ISO 5211	
ZSH-B06-201-SRO4	1304	505	180	214	□225	φ48×65	51.8	14	F14	3/8 " G(NPT)
ZSH-B06-201-SRO5	1354	505	180	214	□225	φ48×65	51.8	14	F14	3/8 " G(NPT)
ZSH-B06-201-SRO6	1374	505	180	214	□225	φ48×65	51.8	14	F14	3/8 " G(NPT)
ZSH-B06-221-SRO4	1354	515	180	214	□250	φ48×65	51.8	14	F14	1/2 " G(NPT)
ZSH-B06-221-SRO5	1374	515	180	214	□250	φ48×65	51.8	14	F14	1/2 " G(NPT)
ZSH-B06-221-SRO6	1324	515	180	214	□250	φ48×65	51.8	14	F14	1/2 " G(NPT)
ZSH-B08-221-SRO4	1458	605	200	238	□250	φ60×100	64.4	18	F16	1/2 " G(NPT)
ZSH-B08-221-SRO5	1458	605	200	238	□250	φ60×100	64.4	18	F16	1/2 " G(NPT)
ZSH-B08-221-SRO6	1458	605	200	238	□250	φ60×100	64.4	18	F16	1/2 " G(NPT)
ZSH-B08-251-SRO4	1488	605	200	238	□280	φ60×100	64.4	18	F16	1/2 " G(NPT)
ZSH-B08-251-SRO5	1528	605	200	238	□280	φ60×100	64.4	18	F16	1/2 " G(NPT)
ZSH-B08-251-SRO6	1528	605	200	238	□280	φ60×100	64.4	18	F16	1/2 " G(NPT)
ZSH-B08-281-SRO4	1528	605	200	238	□310	φ60×100	64.4	18	F16	1/2 " G(NPT)
ZSH-B08-281-SRO5	1528	605	200	238	□310	φ60×100	64.4	18	F16	1/2 " G(NPT)
ZSH-B08-281-SRO6	1558	605	200	238	□310	φ60×100	64.4	18	F16	1/2 " G(NPT)
ZSH-B1-281-SRO4	1660	680	225	245	□310	φ72×120	76.9	20	F25/F16	1/2 " G(NPT)
ZSH-B1-281-SRO5	1690	680	225	245	□310	φ72×120	76.9	20	F25/F16	1/2 " G(NPT)
ZSH-B1-281-SRO6	1710	680	225	245	□310	φ72×120	76.9	20	F25/F16	1/2 " G(NPT)
ZSH-B1-321-SRO4	1670	660	225	245	φ395	φ72×120	76.9	20	F25/F16	1/2 " G(NPT)
ZSH-B1-321-SRO5	1690	660	225	245	φ395	φ72×120	76.9	20	F25/F16	1/2 " G(NPT)
ZSH-B1-321-SRO6	1710	660	225	245	φ395	φ72×120	76.9	20	F25/F16	1/2 " G(NPT)
ZSH-B1-351-SRO4	1690	660	225	245	φ430	φ72×120	76.9	20	F25/F16	3/4 " G(NPT)
ZSH-B1-351-SRO5	1710	660	225	245	φ430	φ72×120	76.9	20	F25/F16	3/4 " G(NPT)
ZSH-B1-351-SRO6	1730	660	225	245	φ430	φ72×120	76.9	20	F25/F16	3/4 " G(NPT)

Note: For imperial dimensions and threading, consult the Factory

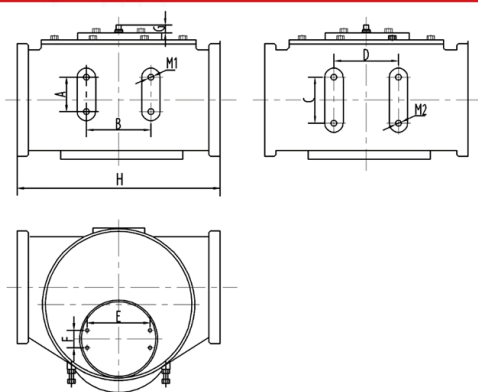
ACTUATOR DIMENSIONS

Table 8: ZSH-B FC(O) Spring Return Actuator Dimensions continued

Model	L	L1	L2	H	D	D5XDepth	A	B	Connecting Flange	Air Connection
	mm								ISO 5211	
ZSH-B1-401-SRO4	1710	660	225	245	φ500	φ72×120	76.9	20	F25/F16	1 " G(NPT)
ZSH-B1-401-SRO5	1730	660	225	245	φ500	φ72×120	76.9	20	F25/F16	1 " G(NPT)
ZSH-B1-401-SRO6	1770	660	225	245	φ500	φ72×120	76.9	20	F25/F16	1 " G(NPT)
ZSH-B2-401-SRO4	1915	775	285	269	φ500	φ100×150	106.4	28	F30/F25	1 " G(NPT)
ZSH-B2-401-SRO5	1965	775	285	269	φ500	φ100×150	106.4	28	F30/F25	1 " G(NPT)
ZSH-B2-401-SRO6	2025	775	285	269	φ500	φ100×150	106.4	28	F30/F25	1 " G(NPT)
ZSH-B2-451-SRO4	1965	775	285	269	φ550	φ100×150	106.4	28	F30/F25	1 " G(NPT)
ZSH-B2-451-SRO5	2025	775	285	269	φ550	φ100×150	106.4	28	F30/F25	1 " G(NPT)
ZSH-B2-451-SRO6	2045	775	285	269	φ550	φ100×150	106.4	28	F30/F25	1 " G(NPT)
ZSH-B3-451-SRO4	2223	915	345	310	φ550	φ160×200	169.4	40	F35/F30	1 " G(NPT)
ZSH-B3-451-SRO5	2243	915	345	310	φ550	φ160×200	169.4	40	F35/F30	1 " G(NPT)
ZSH-B3-451-SRO6	2263	915	345	310	φ550	φ160×200	169.4	40	F35/F30	1 " G(NPT)
ZSH-B3-501-SRO4	2243	915	345	310	φ600	φ160×200	169.4	40	F35/F30	1 1/4 " G(NPT)
ZSH-B3-501-SRO5	2263	915	345	310	φ600	φ160×200	169.4	40	F35/F30	1 1/4 " G(NPT)
ZSH-B3-501-SRO6	2323	915	345	310	φ600	φ160×200	169.4	40	F35/F30	1 1/4 " G(NPT)
ZSH-B3-561-SRO4	2263	915	345	310	φ660	φ160×200	169.4	40	F35/F30	1 1/4 " G(NPT)
ZSH-B3-561-SRO5	2323	915	345	310	φ660	φ160×200	169.4	40	F35/F30	1 1/4 " G(NPT)
ZSH-B3-561-SRO6	2383	915	345	310	φ660	φ160×200	169.4	40	F35/F30	1 1/4 " G(NPT)
ZSH-B3-631-SRO4	2383	915	345	310	φ660	φ160×200	169.4	40	F35/F30	1 1/2 " G(NPT)
ZSH-B3-631-SRO5	2383	915	345	310	φ660	φ160×200	169.4	40	F35/F30	1 1/2 " G(NPT)
ZSH-B3-631-SRO6	2423	915	345	310	φ660	φ160×200	169.4	40	F35/F30	1 1/2 " G(NPT)
ZSH-B4-631-SRO4	2784	1050	412	340	φ730	φ180×220	190.4	45	F40	1 1/2 " G(NPT)
ZSH-B4-631-SRO5	2784	1050	412	340	φ730	φ180×220	190.4	45	F40	1 1/2 " G(NPT)
ZSH-B4-631-SRO6	2924	1050	412	340	φ730	φ180×220	190.4	45	F40	1 1/2 " G(NPT)
ZSH-B4-701-SRO4	2784	1050	412	340	φ810	φ180×220	190.4	45	F40	1 1/2 " G(NPT)
ZSH-B4-701-SRO5	2924	1050	412	340	φ810	φ180×220	190.4	45	F40	1 1/2 " G(NPT)
ZSH-B4-701-SRO6	3014	1050	412	340	φ810	φ180×220	190.4	45	F40	1 1/2 " G(NPT)
ZSH-B4-801-SRO4	2924	1050	412	340	φ910	φ180×220	190.4	45	F40	1 1/2 " G(NPT)
ZSH-B4-801-SRO5	3014	1050	412	340	φ910	φ180×220	190.4	45	F40	1 1/2 " G(NPT)
ZSH-B4-801-SRO6	3100	1050	412	340	φ910	φ180×220	190.4	45	F40	1 1/2 " G(NPT)
ZSH-B5-801-SRO4	3273	1230	486	420	φ910	φ220×250	231.4	50	F48/F40	1 1/2 " G(NPT)
ZSH-B5-801-SRO5	3333	1230	486	420	φ910	φ220×250	231.4	50	F48/F40	1 1/2 " G(NPT)
ZSH-B5-801-SRO6	3453	1230	486	420	φ910	φ220×250	231.4	50	F48/F40	1 1/2 " G(NPT)
ZSH-B5-901-SRO4	3333	1230	486	420	φ1010	φ220×250	231.4	50	F48/F40	2 " G(NPT)
ZSH-B5-901-SRO5	3453	1230	486	420	φ1010	φ220×250	231.4	50	F48/F40	2 " G(NPT)
ZSH-B5-901-SRO6	3613	1230	486	420	φ1010	φ220×250	231.4	50	F48/F40	2 " G(NPT)
ZSH-B6-801-SRO4	4070	1555	658	490	φ910	φ280×320	292.4	63	F60/F48	1 1/2 " G(NPT)
ZSH-B6-801-SRO5	4200	1555	658	490	φ910	φ280×320	292.4	63	F60/F48	1 1/2 " G(NPT)
ZSH-B6-801-SRO6	4260	1555	658	490	φ910	φ280×320	292.4	63	F60/F48	1 1/2 " G(NPT)
ZSH-B6-901-SRO4	4200	1555	658	490	φ1010	φ280×320	292.4	63	F60/F48	2 " G(NPT)
ZSH-B6-901-SRO5	4260	1555	658	490	φ1010	φ280×320	292.4	63	F60/F48	2 " G(NPT)
ZSH-B6-901-SRO6	4320	1555	658	490	φ1010	φ280×320	292.4	63	F60/F48	2 " G(NPT)
ZSH-B6-1001-SRO4	4260	1555	658	490	φ1110	φ280×320	292.4	63	F60/F48	2 " G(NPT)
ZSH-B6-1001-SRO5	4320	1555	658	490	φ1110	φ280×320	292.4	63	F60/F48	2 " G(NPT)
ZSH-B6-1001-SRO6	4380	1555	658	490	φ1110	φ280×320	292.4	63	F60/F48	2 " G(NPT)

Note: For imperial dimensions and threading, consult the Factory

ACCESSORY MOUNTING DIMENSIONS


Table 10: ZSH Body Connecting Dimensions

Body No.	A×B mm	C×D mm	M1 Threaded Hole	M2 Threaded Hole	E mm	F mm	G mm	H mm
B04	50×90	50×90	4-M10 depth15	4-M10 depth15	80	30	20	--
B05	50×90	60×90	4-M10 depth15	4-M10 depth15	80	30	20	--
B06	50×90	80×125	4-M12 depth18	4-M12 depth18	80	30	30	325
B08	50×125	80×125	4-M12 depth18	4-M12 depth18	80	30	30	416
B1	50×125	80×125	4-M12 depth18	4-M12 depth18	130	30	30	480
B2	80×125	95×155	4-M12 depth18	4-M12 depth18	130	30	30	540
B3	80×180	115×185	4-M12 depth18	4-M12 depth18	130	30	30	650
B4	80×220	115×230	4-M12 depth18	4-M12 depth18	130	30	30	760
B5	80×220	140×310	4-M12 depth18	4-M12 depth18	130	30	30	890
B6	100×220	180×400	4-M12 depth18	4-M12 depth18	130	30	30	1160

Note: For imperial dimensions and threading, consult the Factory

CYLINDER VOLUMES

Table 11: ZSH Cylinder Volumes

Model	Cylinder Volume		Model	Cylinder Volume		Model	Cylinder Volume		Model	Cylinder Volume	
	liters	ft3		liters	ft3		liters	ft3		liters	ft3
ZSH-B06-201-DA	6	0.21	ZSH-B4-631-DA	146	5.16	ZSH-B06-201-SR	5	0.18	ZSH-B3-561-SR	95	3.35
ZSH-B08-221-DA	9	0.32	ZSH-B4-701-DA	180	6.36	ZSH-B08-221-SR	7	0.25	ZSH-B3-601-SR	109	3.85
ZSH-B08-251-DA	11	0.39	ZSH-B5-701-DA	216	7.63	ZSH-B08-251-SR	11	0.39	ZSH-B3-631-SR	120	4.24
ZSH-B1-281-DA	17	0.60	ZSH-B5-562-DA	277	9.78	ZSH-B08-281-SR	14	0.49	ZSH-B4-601-SR	130	4.59
ZSH-B1-321-DA	22	0.78	ZSH-B5-801-DA	282	9.96	ZSH-B1-281-SR	16	0.57	ZSH-B4-631-SR	144	5.09
ZSH-B2-351-DA	31	1.09	ZSH-B5-602-DA	317	11.2	ZSH-B1-321-SR	21	0.74	ZSH-B4-701-SR	178	6.29
ZSH-B2-401-DA	41	1.45	ZSH-B5-632-DA	350	12.4	ZSH-B1-351-SR	26	0.92	ZSH-B4-801-SR	233	8.23
ZSH-B2-451-DA	52	1.84	ZSH-B5-901-DA	357	12.6	ZSH-B1-401-SR	34	1.20	ZSH-B5-801-SR	279	9.85
ZSH-B3-451-DA	62	2.19	ZSH-B6-801-DA	380	13.4	ZSH-B2-401-SR	40	1.41	ZSH-B5-901-SR	354	12.5
ZSH-B3-501-DA	76	2.68	ZSH-B6-901-DA	481	17.0	ZSH-B2-451-SR	51	1.80	ZSH-B6-801-SR	376	13.3
ZSH-B3-561-DA	96	3.39	ZSH-B6-702-DA	582	20.6	ZSH-B3-451-SR	61	2.15	ZSH-B6-901-SR	477	16.8
ZSH-B4-561-DA	115	4.06	ZSH-B6-1001-DA	593	20.9	ZSH-B3-501-SR	75	2.65	ZSH-B6-1001-SR	590	20.8
ZSH-B4-601-DA	132	4.66	ZSH-B6-802-DA	760	26.8	—	—	—	—	—	—

CYLINDER VOLUMES

Table 11: Actuator Weights

Model	Weight		Model	Weight	
	kg	lb		kg	lb.
ZSH-B06-201-SRC/O4	156	343	ZSH-B3-561-SRC/O4	970	2134
ZSH-B06-201-SRC/O5	164	361	ZSH-B3-561-SRC/O5	1061	2334
ZSH-B06-201-SRC/O6	170	374	ZSH-B3-561-SRC/O6	1175	2585
ZSH-B06-221-SRC/O4	164	361	ZSH-B3-601-SRC/O4	1163	2559
ZSH-B06-221-SRC/O5	170	374	ZSH-B3-601-SRC/O5	1277	2809
ZSH-B06-221-SRC/O6	166	365	ZSH-B3-601-SRC/O6	1277	2809
ZSH-B08-251-SRC/O4	238	524	ZSH-B3-631-SRC/O4	1323	2911
ZSH-B08-251-SRC/O5	257	565	ZSH-B3-631-SRC/O5	1323	2911
ZSH-B08-251-SRC/O6	280	616	ZSH-B3-631-SRC/O6	1482	3260
ZSH-B08-281-SRC/O4	266	585	ZSH-B4-601-SRC/O4	1471	3236
ZSH-B08-281-SRC/O5	291	640	ZSH-B4-601-SRC/O5	1764	3881
ZSH-B08-281-SRC/O6	303	667	ZSH-B4-601-SRC/O6	1676	3687
ZSH-B1-281-SRC/O4	285	627	ZSH-B4-631-SRC/O4	1722	3788
ZSH-B1-281-SRC/O5	297	653	ZSH-B4-631-SRC/O5	1745	3839
ZSH-B1-281-SRC/O6	308	678	ZSH-B4-631-SRC/O6	2087	4591
ZSH-B1-321-SRC/O4	320	704	ZSH-B4-701-SRC/O4	1956	4303
ZSH-B1-321-SRC/O5	331	728	ZSH-B4-701-SRC/O5	2298	5056
ZSH-B1-321-SRC/O6	342	752	ZSH-B4-701-SRC/O6	2412	5306
ZSH-B1-351-SRC/O4	342	752	ZSH-B4-801-SRC/O4	2474	5443
ZSH-B1-351-SRC/O5	354	779	ZSH-B4-801-SRC/O5	2588	5694
ZSH-B1-351-SRC/O6	377	829	ZSH-B4-801-SRC/O6	2816	6195
ZSH-B1-401-SRC/O4	377	829	ZSH-B5-801-SRC/O4	2643	5815
ZSH-B1-401-SRC/O5	399	878	ZSH-B5-801-SRC/O5	2818	6200
ZSH-B1-401-SRC/O6	439	966	ZSH-B5-801-SRC/O6	3272	7198
ZSH-B2-401-SRC/O4	491	1080	ZSH-B5-901-SRC/O4	3058	6728
ZSH-B2-401-SRC/O5	513	1129	ZSH-B5-901-SRC/O5	3512	7726
ZSH-B2-401-SRC/O6	627	1379	ZSH-B5-901-SRC/O6	3846	8461
ZSH-B2-451-SRC/O4	559	1230	ZSH-B6-801-SRC/O4	3557	7825
ZSH-B2-451-SRC/O5	673	1481	ZSH-B6-801-SRC/O5	3899	8578
ZSH-B2-451-SRC/O6	719	1582	ZSH-B5-801-SRC/O6	4013	8829
ZSH-B3-451-SRC/O4	798	1756	ZSH-B6-901-SRC/O4	4224	9293
ZSH-B3-451-SRC/O5	821	1806	ZSH-B6-901-SRC/O5	4338	9544
ZSH-B3-451-SRC/O6	878	1932	ZSH-B5-901-SRC/O6	4680	10296
ZSH-B3-501-SRC/O4	867	1907	ZSH-B6-1001-SRC/O4	4560	10032
ZSH-B3-501-SRC/O5	924	2033	ZSH-B6-1001-SRC/O5	4902	10784
ZSH-B3-501-SRC/O6	1015	2233	ZSH-B5-1001-SRC/O6	5073	11161
DOUBLE ACTING ACTUATORS					
ZSH-B06-201-DA	103	227	ZSH-B4-801-DA	1334	2935
ZSH-B08-221-DA	126	277	ZSH-B4-502-DA	1061	2334
ZSH-B08-251-DA	137	301	ZSH-B4-562-DA	1197	2633
ZSH-B1-281-DA	171	376	ZSH-B5-701-DA	1505	3311
ZSH-B1-321-DA	194	427	ZSH-B5-801-DA	1699	3738
ZSH-B1-351-DA	206	453	ZSH-B5-901-DA	1938	4264
ZSH-B2-351-DA	263	579	ZSH-B5-1001-DA	2201	4842
ZSH-B2-401-DA	285	627	ZSH-B5-562-DA	1539	3386
ZSH-B2-451-DA	331	728	ZSH-B5-602-DA	1767	3887
ZSH-B3-451-DA	479	1054	ZSH-B5-632-DA	1859	4090
ZSH-B3-501-DA	525	1155	ZSH-B5-702-DA	2337	5141
ZSH-B3-561-DA	570	1254	ZSH-B6-901-DA	2742	6032
ZSH-B3-601-DA	673	1481	ZSH-B6-1001-DA	2964	6521
ZSH-B4-601-DA	901	1982	ZSH-B6-702-DA	3238	7124
ZSH-B4-631-DA	947	2083	ZSH-B6-802-DA	3512	7726
ZSH-B4-701-DA	1158	2548	ZSH-B6-902-DA	4161	9154

Note:

1) Actuator weights are without handwheels, mechanical stops, or pneumatic accessories.

WHO WE ARE

WZI Flow Control, Ltd., a subsidiary of WuZhong Instrument Company, Ltd., began business in 1959. As China's largest control valve manufacturer, WZI has a state of the art 2.8M ft2 production, foundry and corporate office campus. With over 1000 employees, WZI is expanding globally with increased manu-facturing, sales and service capabilities to better serve our rapidly growing global customer base.

As a member of the highly acclaimed China Automation Group (www.cag.com.hk), WZI has successfully supplied over 1 million valves for the global market. With our 100% Testing and Serialization Program, WZI prides itself on our high quality, competitively priced products with superior delivery from our new sales and service center located in Houston, Texas. Our Southern California office designs new products and makes continuous improvements to our broad existing product offering.

LET'S WORK TOGETHER

Contact US



+1.832.328.7883

Sales@WZIFlowControl.comwww.WZIFlowControl.com

Location

USA Headquarters

5656 N. Sam Houston Pkwy E.,
Suite 150 Houston, Texas 77032 USA

WE'RE QUALIFIED

As a global manufacturing company, WZI Flow Control verifies that we are operating in full compliance with this partial list of industry standards. Our compliance includes additional standards not shown here. Please contact the factory for additional details.

ISO 9001	API Spec Q1	API 6DSS	API 607, 7th Edition
ISO 14001	API 6A	API 17D	API 6FA, 3rd Edition
OHSAS 18001	API 6D	API 609 Cat B	SIL-capable

QUALITY
TRUST
INTEGRITY

Disclaimer: The information and specifications contained in this literature are believed to be accurate, they are supplied for information purposes and should not be considered certified or a guaranty of satisfactory results by reliance thereon. Nothing contained in this literature is to be construed as a warranty or guaranty, express or implied. Because WZI Flow Control is continually improving our product, the specifications, dimensions, and information contained in this literature are subject to change without notice. Should any questions arise concerning these provisions, the purchaser or user should contact WZI Flow Control at the contact information given.

© 2020 WZI Flow Control, LTD. All rights reserved.