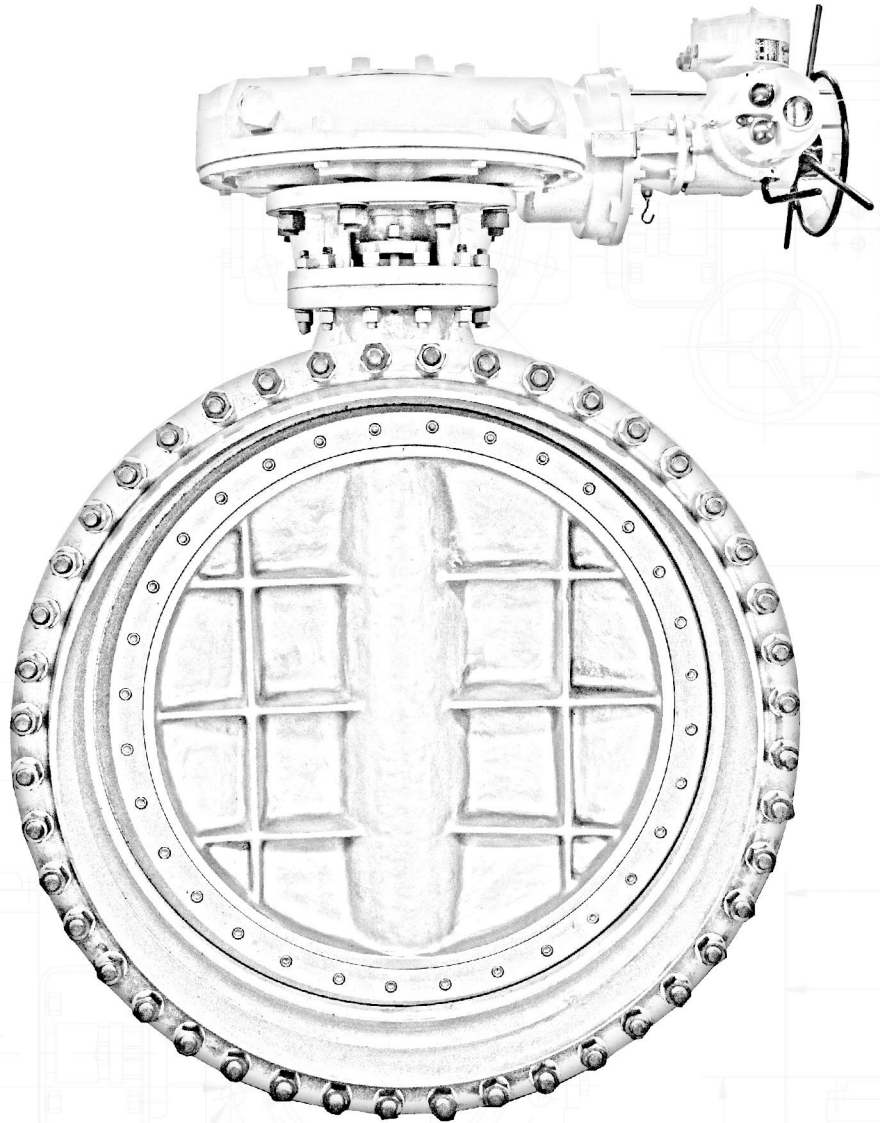


WZIFLOW CONTROL



3
YEAR
WARRANTY

1M+
VALVES
INSTALLED

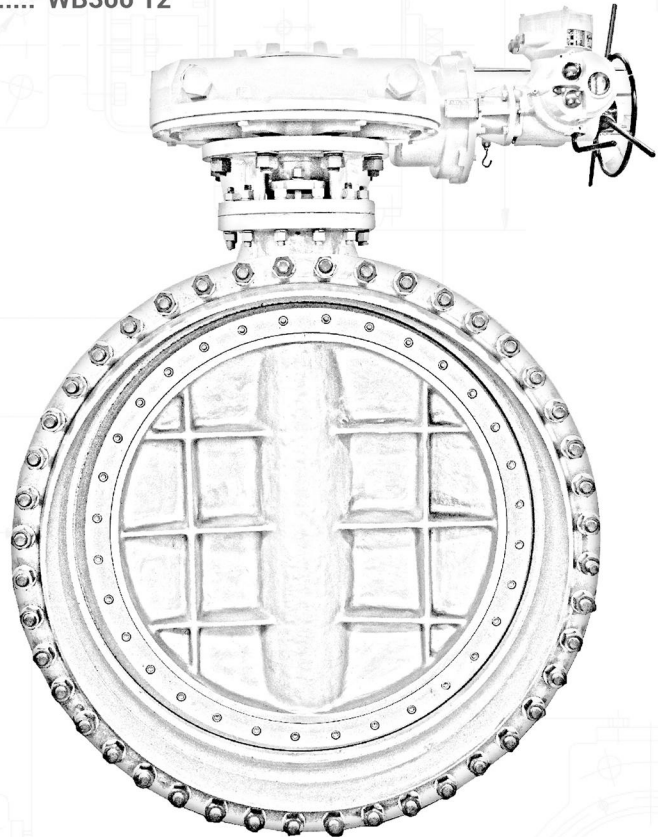
ASSEMBLED
IN USA

SERIES WB300

HIGH PERFORMANCE BUTTERFLY VALVE

TABLE OF CONTENTS

PRODUCT FEATURES.....	WB300 2
KEY COMPONENTS.....	WB300 3
MATERIALS.....	WB300 4
SEAT PRESSURE TEMPERTURE LIMITS.....	WB300 5
Cv VALUES.....	WB300 5
DIMENSIONS AND WEIGHTS.....	WB300 6-11
CONTACT INFORMATION.....	WB300 12



SERIES WB300 FEATURES

- **Body** Extended Neck and Easy Access to Stem Packing
- **Double Offset** disk design
- **Disc** Standard Stainless Steel Engineered to Maximize Flow Providing a High Cv
- **Resilient Seat** High Pressure Resistance and Fire Safe (Optional)
- **Seat Retainer** Easy Replacement, Low Maintenance Cost
- **Stem Bearings** Top and Bottom Bearings Provide Resistance to Unbalanced Side Loading
- **Adjustable Stem Packing** Ability to Adjust Packing without Removing Actuator
- **Taper Pins** Precision Fit Tangential Pins

KEY COMPONENTS

HIGH PERFORMANCE BUTTERFLY

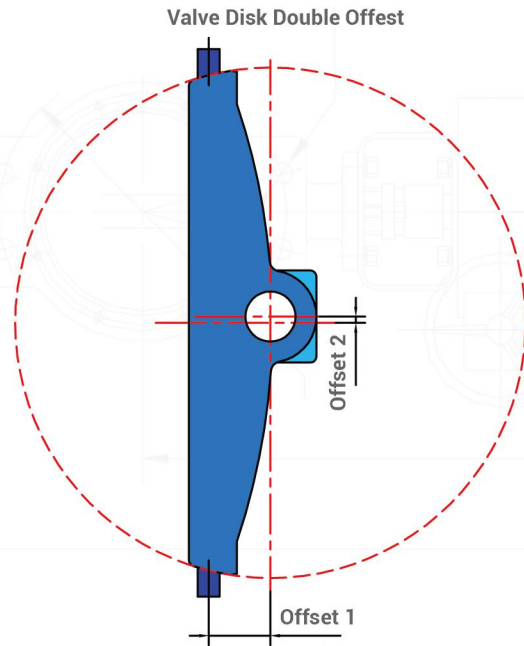
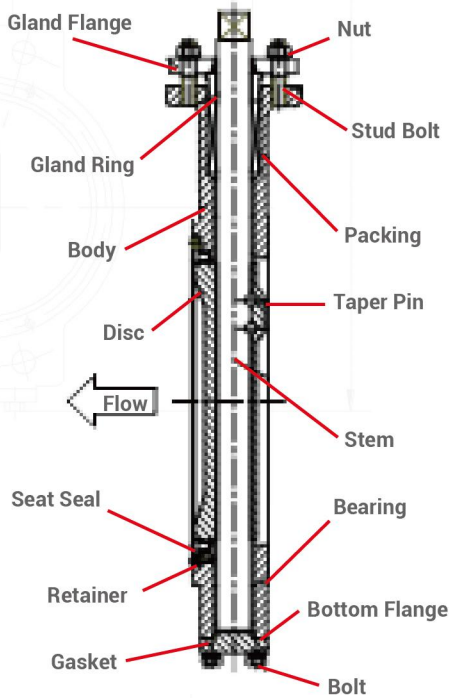


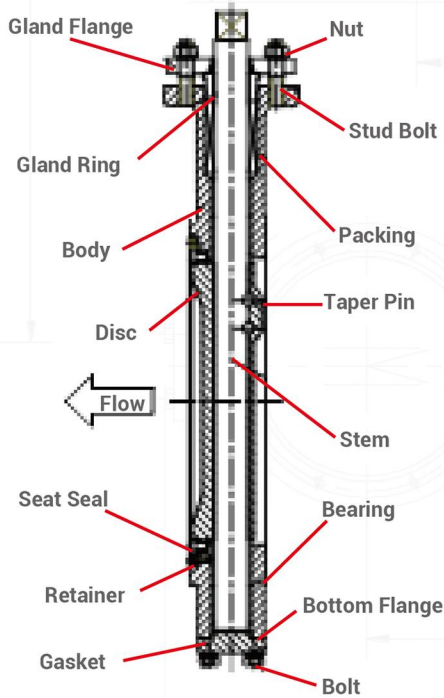
Table 1: Key Components

Type	High Performance Double Offset Butterfly
Body Sizes	2"(DN50) to 120"(DN3000)
Body Type	Wafer Style and Double Flange
Pressure Classes	Class 150
Body Connections	Raised Face Flange
Design Temperature	-45°C to 500°C, -50°F to 932°F
Face to Face Dimensions	See Tables 4 and 5
Packing	PTFE V-Ring, Flexible Graphite
Seat Seal Material	Filled PTFE/O-Ring Energized, Metal

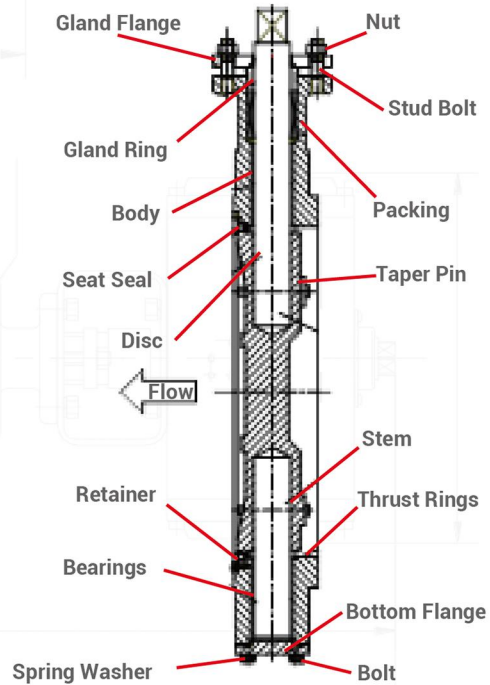
NOTES:

- 1) Lugged style bodies are optional
- 2) For optional sizes and ratings, consult factory

MATERIALS OF CONSTRUCTION



Valve Sizes to 10"(DN250)



Valve Sizes 12"(DN300) and Larger

Table 2: Valve Materials

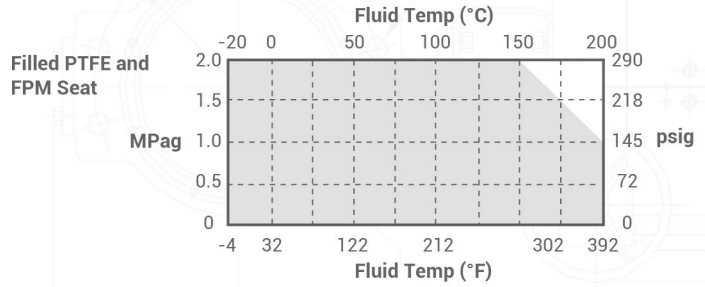
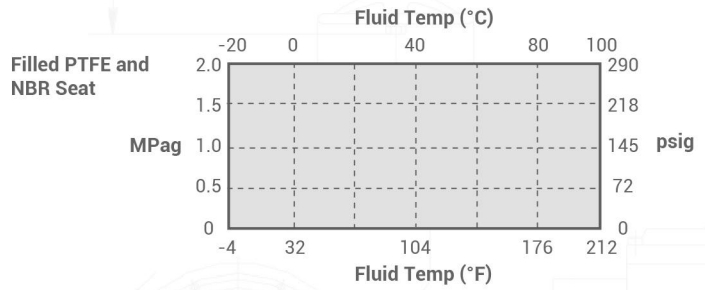
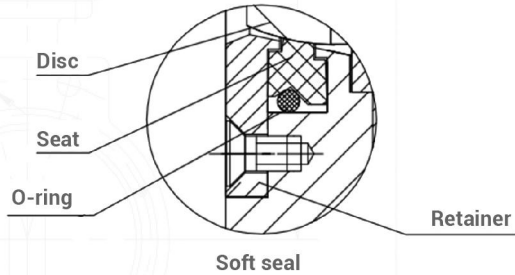
No.	Name	Carbon Steel	Stainless Steel
1	Body	A216 WCB	A351 CF8, A351 CF8M
2	Seat	304/316/F4+MOS2	304/316/F4+MOS2
3	Disc	CA15 (NT with metal seat)	CF8, CF8M (NT with metal seat)
4	Stem	316 SS, 17-4 PH HT, 420 SS HT	316 SS, 17-4 PH HT, 420 SS HT
5	Retainer	304 SS, 316 SS, Carbon Steel	304 SS, 316 SS
6	Bolt	Stainless steel	Stainless steel
7	Taper pin	430 SS, 316 SS	430 SS, 316 SS
8	Stud bolt	A193-B7	A193-B8/B8M
9	Bottom cover	A216 WCB	A351 CF8, A351 CF8M
10	Gasket	PTFE, Spiral wound gasket	PTFE, Spiral wound gasket
11	Thrust ring	Solid lubricant embedded thrust ring	
12	Guide	Metaloplast®, High Nickel Cast Iron, 304 SS NT	
13	Spacer ring	304 SS	
14	Packing	PTFE/ FLEXIBLE GRAPHITE	
15	Gland	420 SS	
16	Gland flange	A351 CF8	
17	Bolt	A193-B7	A193-B8
18	Nut	A194-2H	A194-B8

NOTES:

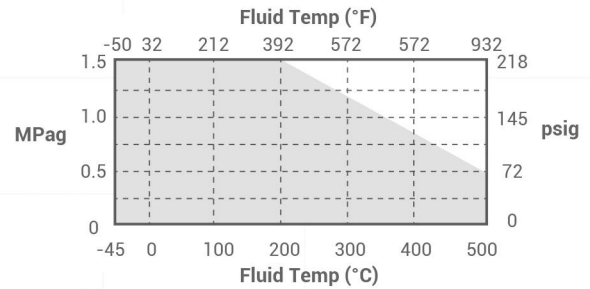
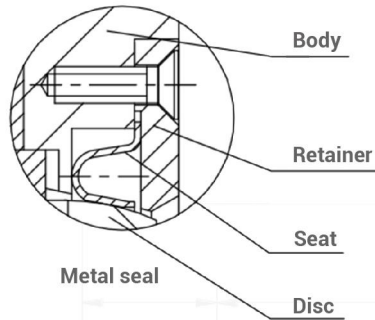
- 1) HT=Heat Treated, NT=Nitride
- 2) Optional materials are available; consult the factory
- 3) Pressure boundary parts are provided to ASTM standards
- 4) Valve internal materials are supplied to ASTM/JIS/DIN/GB equivalent
- 5) Compliance to NACE is available to MR0103 or MR01-75/ISO 15156

MATERIALS OF CONSTRUCTION

Soft Seat-reinforced Teflon



METAL SEAT



NOTES:

1) Allowable pressure drop may be limited by actuator, shaft material, or pressure class rating

Cv VALUES

WB300 FLOW CAPACITY

Table 3: Cv Values

DN	50	80	100	125	150	200	250	300	350	400	450	500	600	700	800	
in	2	3	4	5	6	8	10	12	14	16	18	20	24	28	32	
Cv	90°	77	263	482	748	1352	2313	3743	5102	6864	8962	11338	13997	20158	27196	34840
	60°	-	130	240	365	660	1125	1820	2480	3300	4312	5445	6726	9680	13050	16720

NOTES:

- 1) 90°=Full open; on/off application
- 2) 60°=Partially open; control application
- 3) Cv values shown are for 150# class valve, consult factory for different ratings
- 4) Valve rangeability is 50:1 or better

DIMENSIONS & WEIGHTS

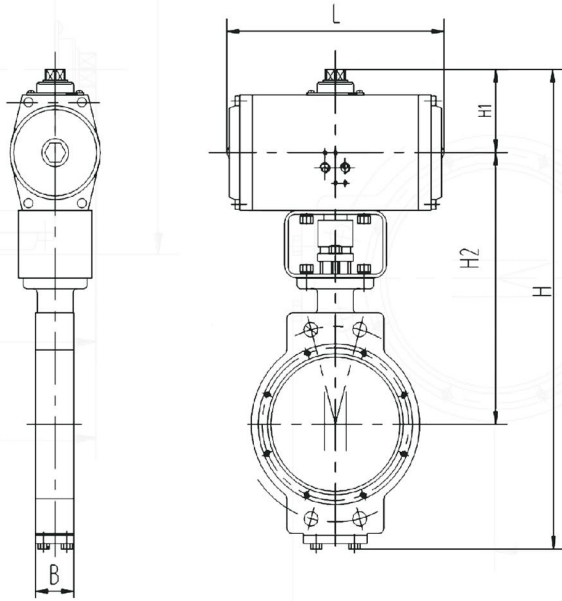


Fig. 4.1: Wafer Type Without Handwheel

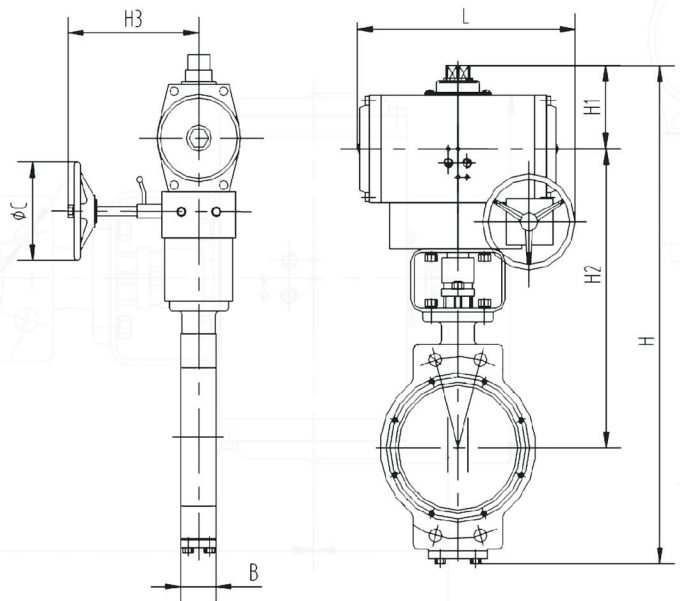


Fig. 4.2: Wafer Type With Handwheel

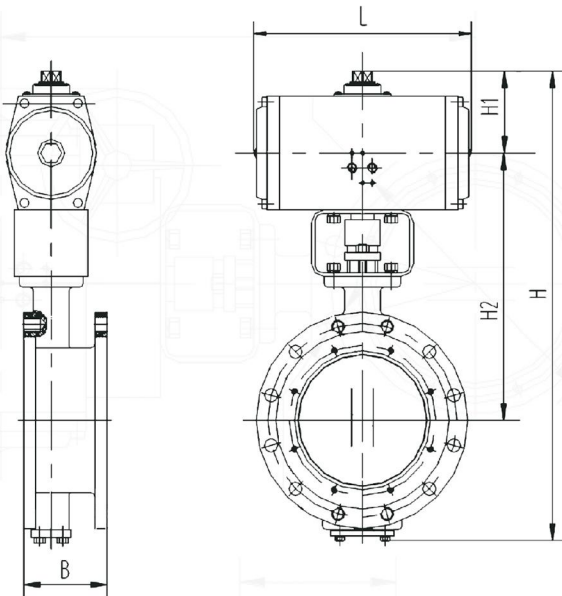


Fig. 4.3: Wafer Type Without Handwheel

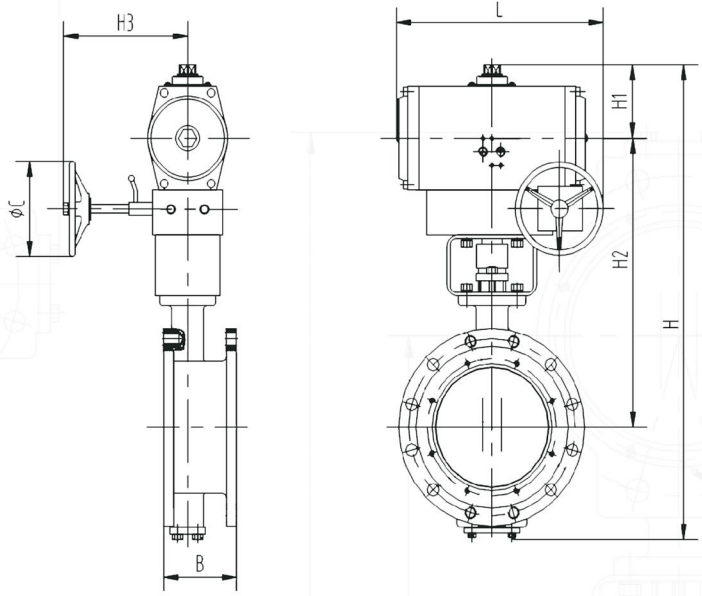


Fig. 4.4: Wafer Type With Handwheel

NOTES:

- 1) For sizes, ratings, and actuators not shown, consult factory
- 2) Flange bolt patterns are per ASME B16.5 up to 24". Tapped holes on double flange body, one side depending on size

DIMENSIONS & WEIGHTS

Table 4.1: 150 Class Wafer Dimensions Metric, Fig. 4.1 and 4.2

VALVE SIZE (mm)	B	ACTUATOR		WITHOUT HANDWHEEL			WITH HANDWHEEL			
		NO.	L	H	H1	H2	H	H2	H3	C
50	43	RB63	180	345.4	75	201.4	449.4	305.4	155	200
		RB80	236	355.4	76.5	209.9	477.4	331.9	195	200
		RB100	272	393.4	102	222.4	516.4	345.4	195	200
80	46	RB80	236	441	76.5	250.5	558	367.5	195	200
		RB100	272	479	102	263	597	381	195	200
		RB125	340	521	111	296	638	413	195	200
100	52	RB160	452	641	171	356	759	474	205	300
		RB100	272	518	102	286	636	404	195	200
		RB125	340	568	111	327	685	444	195	200
125	56	RB160	452	680	171	379	798	497	205	300
		RB200	570	770	240	400	918	548	245	400
		RB100	272	537	102	296	655	414	195	200
150	56	RB125	340	587	111	337	704	454	195	200
		RB160	452	699	171	389	817	507	205	300
		RB200	570	789	240	410	937	558	245	400
200	60	RB100	272	575	102	311	693	429	195	200
		RB125	340	625	111	352	742	469	195	200
		RB160	452	737	171	404	855	522	205	300
250	68	RB200	570	827	240	425	975	573	245	400
		RB125	340	728	111	419	845	536	195	200
		RB160	452	808	171	439	926	557	205	300
300	78	RB200	570	898	240	460	1046	608	245	400
		RB254	695	908	198	512	1058	662	265	600
		RB160	452	874	136	499	992	617	205	300
350	78	RB200	570	909	150	520	1057	668	245	400
		RB254	695	1019	208	572	1169	722	265	600
		RB270	722	1009	190	580	1159	730	265	600
400	102	RB270	722	1092	190	620	1242	770	265	600
		RB254	695	1102	208	612	1252	762	265	600
		RB200	570	1100	150	625	1248	773	245	400
450	114	RB254	695	1190	208	657	1340	807	265	600
		RB270	722	1180	190	665	1330	815	265	600
		RB300	742	1208	204	679	1358	829	265	600
500	127	RB254	695	1231	208	667	1381	817	265	600
		RB270	722	1221	190	675	1371	825	265	600
		RB300	742	1249	204	689	1399	839	265	600
600	130	RB350	860	1303	231	716	1498	911	410	800
		RB254	695	1273	208	697	1423	847	265	600
		RB270	722	1263	190	705	1413	855	265	600
600	130	RB350	860	1345	231	746	1540	941	410	800
		RB400	918	1423	270	785	1618	980	430	800
		RB254	695	1346	208	732	1496	882	265	600
600	130	RB270	722	1336	190	740	1486	890	265	600
		RB350	860	1418	231	781	1613	976	410	800
		RB400	918	1496	270	820	1691	1015	430	800
600	130	RB270	722	1517	190	840	1667	990	265	600
		RB300	742	1545	204	854	1695	1004	265	600
		RB350	860	1599	231	881	1794	1076	410	800
600	130	RB400	918	1677	270	920	1872	1115	430	800

NOTES:

1) For alternate sizes and ratings, consult the factory

DIMENSIONS & WEIGHTS

Table 4.2: 150 Class Wafer Dimensions Imperial (inches), Fig. 4.1 and 4.2

VALVE SIZE (inch)	B	ACTUATOR		WITHOUT HANDWHEEL			WITH HANDWHEEL			
		NO.	L	H	H1	H2	H	H2	H3	C
2"	1.69	RB63	7.1	13.6	3.0	7.9	17.7	12.0	6.1	7.9
		RB80	9.3	14.0	3.0	8.3	18.8	13.1	7.7	7.9
		RB100	10.7	15.5	4.0	8.8	20.3	13.6	7.7	7.9
3"	1.81	RB80	9.3	17.4	3.0	9.9	22.0	14.5	7.7	7.9
		RB100	10.7	18.9	4.0	10.4	23.5	15.0	7.7	7.9
		RB125	13.4	20.5	4.4	11.7	25.1	16.3	7.7	7.9
4"	2.06	RB160	17.8	25.2	6.7	14.0	29.9	18.7	8.1	11.8
		RB200	22.4	30.3	9.4	15.7	36.1	21.6	9.6	15.7
		RB100	10.7	20.4	4.0	11.3	25.0	15.9	7.7	7.9
5"	2.19	RB125	13.4	22.4	4.4	12.9	27.0	17.5	7.7	7.9
		RB160	17.8	26.8	6.7	14.9	31.4	19.6	8.1	11.8
		RB200	22.4	30.3	9.4	15.7	36.1	21.6	9.6	15.7
6"	2.19	RB100	10.7	21.1	4.0	11.7	25.8	16.3	7.7	7.9
		RB125	13.4	23.1	4.4	13.3	27.7	17.9	7.7	7.9
		RB160	17.8	27.5	6.7	15.3	32.2	20.0	8.1	11.8
8"	3.38	RB200	22.4	31.1	9.4	16.1	36.9	22.0	9.6	15.7
		RB100	10.7	22.6	4.0	12.2	27.3	16.9	7.7	7.9
		RB125	13.4	24.6	4.4	13.9	29.2	18.5	7.7	7.9
10"	4.42	RB160	17.8	29.0	6.7	15.9	33.7	20.6	8.1	11.8
		RB200	22.4	32.6	9.4	16.7	38.4	22.6	9.6	15.7
		RB254	27.4	35.7	7.8	20.2	41.7	26.1	10.4	23.6
12"	3.06	RB160	17.8	34.4	5.4	19.6	39.1	24.3	8.1	11.8
		RB200	22.4	35.8	5.9	20.5	41.6	26.3	9.6	15.7
		RB270	28.4	39.7	7.5	22.8	45.6	28.7	10.4	23.6
14"	3.06	RB254	27.4	40.1	8.2	22.5	46.0	28.4	10.4	23.6
		RB270	28.4	43.0	7.5	24.4	48.9	30.3	10.4	23.6
		RB300	29.2	47.6	8.0	26.7	53.5	32.6	10.4	23.6
16"	4.00	RB270	28.4	43.3	5.9	24.6	49.1	30.4	9.6	15.7
		RB300	29.2	46.9	8.2	25.9	52.8	31.8	10.4	23.6
		RB350	33.9	51.3	9.1	28.2	59.0	35.9	16.1	31.5
18"	4.50	RB254	27.4	48.5	8.2	26.3	54.4	32.2	10.4	23.6
		RB270	28.4	48.1	7.5	26.6	54.0	32.5	10.4	23.6
		RB350	33.9	53.0	9.1	29.4	60.6	37.0	16.1	31.5
20"	5.00	RB400	36.1	56.0	10.6	30.9	63.7	38.6	16.9	31.5
		RB254	27.4	50.1	8.2	27.4	56.0	33.3	10.4	23.6
		RB270	28.4	49.7	7.5	27.8	55.6	33.7	10.4	23.6
24"	5.12	RB350	33.9	55.8	9.1	30.7	63.5	38.4	16.1	31.5
		RB400	36.1	58.9	10.6	32.3	66.6	40.0	16.9	31.5
		RB270	28.4	59.7	7.5	33.1	65.6	39.0	10.4	23.6
24"	5.12	RB300	29.2	60.8	8.0	33.6	66.7	39.5	10.4	23.6
		RB350	33.9	63.0	9.1	34.7	70.6	42.4	16.1	31.5
		RB400	36.1	66.0	10.6	36.2	73.7	43.9	16.9	31.5

NOTES:

1) For alternate sizes and ratings, consult the factory

DIMENSIONS & WEIGHTS

Table 4.3: 150 Class Double Flange Dimensions Metric, Fig. 4.3 and 4.4

VALVE SIZE (mm)	B	ACTUATOR		WITHOUT HANDWHEEL			WITH HANDWHEEL			
		NO.	L	H	H1	H2	H	H2	H3	C
80	112	RB80	236	441	76.5	250.5	558	367.5	195	200
		RB100	272	479	102	263	597	381	195	200
		RB125	340	521	111	296	638	413	195	200
		RB160	452	641	171	356	759	474	205	300
100	125	RB100	272	518	102	286	636	404	195	200
		RB125	340	568	111	327	685	444	195	200
		RB160	452	680	171	379	798	497	205	300
		RB200	570	770	240	400	918	548	245	400
125	139	RB100	272	537	102	296	655	414	195	200
		RB125	340	587	111	337	704	454	195	200
		RB160	452	699	171	389	817	507	205	300
		RB200	570	789	240	410	937	558	245	400
150	139	RB100	272	575	102	311	693	429	195	200
		RB125	340	625	111	352	742	469	195	200
		RB160	452	737	171	404	855	522	205	300
		RB200	570	827	240	425	975	573	245	400
200	148	RB125	340	728	111	419	845	536	195	200
		RB160	452	808	171	439	926	557	205	300
		RB200	570	898	240	460	1046	608	245	400
		RB254	695	908	198	512	1058	662	265	600
250	162	RB160	452	874	136	499	992	617	205	300
		RB200	570	909	150	520	1057	668	245	400
		RB254	695	1019	208	572	1169	722	265	600
		RB270	722	1009	190	580	1159	730	265	600
300	175	RB160	452	957	136	539	1075	657	205	300
		RB200	570	992	150	560	1140	708	245	400
		RB254	695	1102	208	612	1252	762	265	600
		RB270	722	1092	190	620	1242	770	265	600
350	176	RB200	570	1100	150	625	1248	773	245	400
		RB254	695	1190	208	657	1340	807	265	600
		RB270	722	1180	190	665	1330	815	265	600
		RB300	742	1208	204	679	1358	829	265	600
400	216	RB254	695	1231	208	667	1381	817	265	600
		RB270	722	1221	190	675	1371	825	265	600
		RB300	742	1249	204	689	1399	839	265	600
		RB350	860	1303	231	716	1498	911	410	800
450	222	RB254	695	1273	208	697	1423	847	265	600
		RB270	722	1263	190	705	1413	855	265	600
		RB350	860	1345	231	746	1540	941	410	800
		RB400	918	1423	270	785	1618	980	430	800
500	229	RB254	695	1346	208	732	1496	882	265	600
		RB270	722	1336	190	740	1486	890	265	600
		RB350	860	1418	231	781	1613	976	410	800
		RB400	918	1496	270	820	1691	1015	430	800
600	243	RB270	722	1517	190	840	1667	990	265	600
		RB300	742	1545	204	854	1695	1004	265	600
		RB350	860	1599	231	881	1794	1076	410	800
		RB400	918	1677	270	920	1872	1115	430	800

NOTES:

1) For alternate sizes and ratings, consult the factory

DIMENSIONS & WEIGHTS

Table 4.4: 150 Class Double Flange Dimensions Imperial (inches), Fig. 4.3 and 4.4

VALVE SIZE (inch)	B	ACTUATOR		WITHOUT HANDWHEEL			WITH HANDWHEEL			
		NO.	L	H	H1	H2	H	H2	H3	C
80	4.41	RB80	9.3	17.4	3.0	9.9	22.0	14.5	7.7	7.9
		RB100	10.7	18.9	4.0	10.4	23.5	15.0	7.7	7.9
		RB125	13.4	20.5	4.4	11.7	25.1	16.3	7.7	7.9
		RB160	17.8	25.2	6.7	14.0	29.9	18.7	8.1	11.8
100	4.92	RB100	10.7	20.4	4.0	11.3	25.0	15.9	7.7	7.9
		RB125	13.4	22.4	4.4	12.9	27.0	17.5	7.7	7.9
		RB160	17.8	26.8	6.7	14.9	31.4	19.6	8.1	11.8
		RB200	22.4	30.3	9.4	15.7	36.1	21.6	9.6	15.7
125	5.47	RB100	10.7	21.1	4.0	11.7	25.8	16.3	7.7	7.9
		RB125	13.4	23.1	4.4	13.3	27.7	17.9	7.7	7.9
		RB160	17.8	27.5	6.7	15.3	32.2	20.0	8.1	11.8
		RB200	22.4	31.1	9.4	16.1	36.9	22.0	9.6	15.7
150	5.45	RB100	10.7	22.6	4.0	12.2	27.3	16.9	7.7	7.9
		RB125	13.4	24.6	4.4	13.9	29.2	18.5	7.7	7.9
		RB160	17.8	29.0	6.7	15.9	33.7	20.6	8.1	11.8
		RB200	22.4	32.6	9.4	16.7	38.4	22.6	9.6	15.7
200	5.83	RB125	13.4	28.7	4.4	16.5	33.3	21.1	7.7	7.9
		RB160	17.8	31.8	6.7	17.3	36.5	21.9	8.1	11.8
		RB200	22.4	35.4	9.4	18.1	41.2	23.9	9.6	15.7
		RB254	27.4	35.7	7.8	20.2	41.7	26.1	10.4	23.6
250	6.38	RB160	17.8	34.4	5.4	19.6	39.1	24.3	8.1	11.8
		RB200	22.4	35.8	5.9	20.5	41.6	26.3	9.6	15.7
		RB254	27.4	40.1	8.2	22.5	46.0	28.4	10.4	23.6
		RB270	28.4	39.7	7.5	22.8	45.6	28.7	10.4	23.6
300	6.60	RB160	17.8	37.7	5.4	21.2	42.3	25.9	8.1	11.8
		RB200	22.4	39.1	5.9	22.0	44.9	27.9	9.6	15.7
		RB254	27.4	43.4	8.2	24.1	49.3	30.0	10.4	23.6
		RB270	28.4	43.0	7.5	24.4	48.9	30.3	10.4	23.6
350	6.93	RB200	22.4	43.3	5.9	24.6	49.1	30.4	9.6	15.7
		RB254	27.4	46.9	8.2	25.9	52.8	31.8	10.4	23.6
		RB270	28.4	46.5	7.5	26.2	52.4	32.1	10.4	23.6
		RB300	29.2	47.6	8.0	26.7	53.5	32.6	10.4	23.6
400	8.50	RB254	27.4	48.5	8.2	26.3	54.4	32.2	10.4	23.6
		RB270	28.4	48.1	7.5	26.6	54.0	32.5	10.4	23.6
		RB300	29.2	49.2	8.0	27.1	55.1	33.0	10.4	23.6
		RB350	33.9	51.3	9.1	28.2	59.0	35.9	16.1	31.5
450	8.75	RB254	27.4	50.1	8.2	27.4	56.0	33.3	10.4	23.6
		RB270	28.4	49.7	7.5	27.8	55.6	33.7	10.4	23.6
		RB350	33.9	53.0	9.1	29.4	60.6	37.0	16.1	31.5
		RB400	36.1	56.0	10.6	30.9	63.7	38.6	16.9	31.5
500	9.00	RB254	27.4	53.0	8.2	28.8	58.9	34.7	10.4	23.6
		RB270	28.4	52.6	7.5	29.1	58.5	35.0	10.4	23.6
		RB350	33.9	55.8	9.1	30.7	63.5	38.4	16.1	31.5
		RB400	36.1	58.9	10.6	32.3	66.6	40.0	16.9	31.5
600	9.56	RB270	28.4	59.7	7.5	33.1	65.6	39.0	10.4	23.6
		RB300	29.2	60.8	8.0	33.6	66.7	39.5	10.4	23.6
		RB350	33.9	63.0	9.1	34.7	70.6	42.4	16.1	31.5
		RB400	36.1	66.0	10.6	36.2	73.7	43.9	16.9	31.5

NOTES:

1) For sizes and ratings not shown, consult factory

DIMENSIONS & WEIGHTS

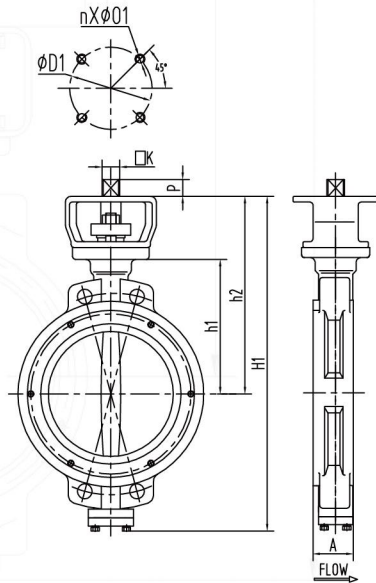


Fig. 5.1: Wafer Valve Actuator Interface

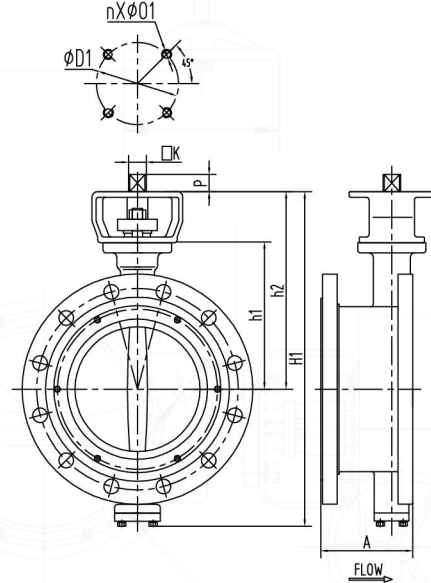


Fig. 5.2 Double Flange Valve Actuator Interface

Table 5.1: 150 Class Wafer Valve Dimensions

Valve Size, DN(mm)/Inch	A		h1		h2		H1		□K	D1		nXΦ	Weight	
	mm	inch	mm	inch	mm	inch	mm	inch	mm	mm	inch	mm	kg	lb.
DN50/2"	43	1.69	101	4.0	182	7.1	248	9.7	□9	70	2.76	4xΦ8	5	11
DN80/3"	46	1.81	137	5.4	194	7.6	312	12.3	□11	102	4.02	4xΦ12	11.5	25
DN100/4"	52	2.05	160	6.3	243	9.6	368	14.5	□17	125	4.92	4xΦ14	16.8	37
DN125/5"	56	2.20	170	6.7	251	9.9	387	15.2	□17	125	4.92	4xΦ14	20.8	46
DN150/6"	56	2.20	185	7.3	305	12.0	465	18.3	□17	125	4.92	4xΦ14	23.8	52
DN200/8"	60	2.36	220	8.7	320	12.6	512	20.1	□22	140	5.51	4xΦ18	34.7	76
DN250/10"	68	2.68	280	11.0	370	14.6	589	23.2	□24	165	6.50	4xΦ22	57.5	127
DN300/12"	78	3.07	320	12.6	410	16.1	687	27.0	□24	165	6.50	4xΦ22	67.5	149
DN350/14"	78	3.07	365	14.4	465	18.3	787	31.0	□32	165	6.50	4xΦ22	85	187
DN400/16"	102	4.02	395	15.6	495	19.5	848	33.4	□36	165	6.50	4xΦ22	120	264
DN450/18"	114	4.49	425	16.7	715	28.1	1086	42.8	□42	165	6.50	4xΦ22	150	330
DN500/20"	127	5.00	460	18.1	750	29.5	1152	45.4	□42	165	6.50	4xΦ22	229	504
DN600/24"	130	5.12	560	22.0	850	33.5	1337	52.6	□46	165	6.50	4xΦ22	344	757

Table 5.2: 150 Class Double Flange Valve Dimensions

Valve Size, DN(mm)/Inch	A		h1		h2		H1		□K	D1		nXΦ	Weight	
	mm	inch	mm	inch	mm	inch	mm	inch	mm	mm	inch	mm	kg	lb.
DN80/3"	112	4.41	137	5.4	193.5	7.6	312	12.3	□11	102	4.02	4xΦ12	16.5	36
DN100/4"	125	4.92	160	6.3	243	9.6	368	14.5	□17	125	4.92	4xΦ14	26.8	59
DN125/5"	139	5.50	170	6.7	250.5	9.9	387	15.2	□17	125	4.92	4xΦ14	33.8	74
DN150/6"	139	5.50	185	7.3	304.5	12.0	465	18.3	□17	125	4.92	4xΦ14	39.8	88
DN200/8"	148	5.83	220	8.7	320	12.6	512	20.1	□22	140	5.51	4xΦ18	54.7	120
DN250/10"	162	6.38	280	11.0	370	14.6	589	23.2	□24	165	6.50	4xΦ22	87.5	193
DN300/12"	175	6.89	320	12.6	410	16.1	687	27.0	□24	165	6.50	4xΦ22	111.5	245
DN350/14"	176	6.93	365	14.4	465	18.3	787	31.0	□32	165	6.50	4xΦ22	178	392
DN400/16"	216	8.50	395	15.6	495	19.5	848	33.4	□36	165	6.50	4xΦ22	202	444
DN450/18"	222	8.74	425	16.7	715	28.1	1086	42.8	□42	165	6.50	4xΦ22	250	550
DN500/20"	229	9.02	460	18.1	750	29.5	1152	45.4	□42	165	6.50	4xΦ22	427	939
DN600/24"	243	9.57	560	22.0	850	33.5	1337	52.6	□46	165	6.50	4xΦ22	544	1197

NOTES:

1) For sizes and ratings not shown, consult factory

WHO WE ARE

WZI Flow Control, Ltd., a subsidiary of WuZhong Instrument Company, Ltd., began business in 1959. As China's largest control valve manufacturer, WZI has a state of the art 2.8M ft² production, foundry and corporate office campus. With over 1000 employees, WZI is expanding globally with increased manufacturing, sales and service capabilities to better serve our rapidly growing global customer base.

As a member of the highly acclaimed China Automation Group (www.cag.com.hk), WZI has successfully supplied over 1 million valves for the global market. With our 100% Testing and Serialization Program, WZI prides itself on our high quality, competitively priced products with superior delivery from our new sales and service center located in Houston, Texas. Our Southern California office designs new products and makes continuous improvements to our broad existing product offering.

LET'S WORK TOGETHER

Contact US

 +1.832.328.7883

 Sales@WZIFlowControl.com

Location

USA Headquarters

5656 N. Sam Houston Pkwy E., Suite 150
Houston, Texas 77032 USA

www.WZIFlowControl.com

WE'RE QUALIFIED

As a global manufacturing company, WZI Flow Control verifies that we are operating in full compliance with this partial list of industry standards. Our compliance includes additional standards not shown here. Please contact the factory for additional details.

> ISO 9001
> ISO 14001
> OHSAS 18001

> API Spec Q1
> API 6A
> API 6D

> API 6DSS
> API 17D
> API 609 Cat B

> API 607, 7th Edition
> API 6FA, 3rd Edition
> SIL-capable

QUALITY
TRUST
INTEGRITY

Disclaimer: The information and specifications contained in this literature are believed to be accurate, they are supplied for information purposes and should not be considered certified or a guaranty of satisfactory results by reliance thereon. Nothing contained in this literature is to be construed as a warranty or guaranty, express or implied. Because WZI Flow Control is continually improving our product, the specifications, dimensions, and information contained in this literature are subject to change without notice. Should any questions arise concerning these provisions, the purchaser or user should contact WZI Flow Control at the contact information given.

© 2019 WZI Flow Control, LTD. All rights reserved.

PB_WB300_1219