

WZI FLOW CONTROL

3
YEAR
WARRANTY

1M+
VALVES
INSTALLED

ASSEMBLED
IN USA



SERIES G3010

HIGH PRESSURE FULL BORE BALL VALVES

TABLE OF CONTENTS

FEATURES.....	G3010 2
KEY COMPONENTS	G3010 3
VALVE SHUTOFF OPTIONS.....	G3010 4
VALVE TORQUE REQUIREMENTS.....	G3010 4
MATERIALS OF CONSTRUCTION.....	G3010 5-7
DIMENSIONS AND WEIGHTS.....	G3010 8-15
CONTACT INFORMATION.....	G3010 16



SERIES G3010 FEATURES

- Floating and Trunnion Mounted Two and Three Piece Ball Valves
- Metal Seated and Soft Seated Designs
- Class 600 to 1500 Standard, other Pressure Ratings Available
- Standard Valve Sizes 1/2" (DN15) ~ 18" (DN450), Larger Product Available
- Firesafe Option to API 6FA
- Blowout Proof Stem
- SIL 2 Certified
- Shutoff to API 598, Hard and Soft Seat, Bi-Directional
- Actuator Mounting to ISO 5211
- Complies with API 6D

G3010 FULL PORT BALL VALVES

KEY COMPONENTS

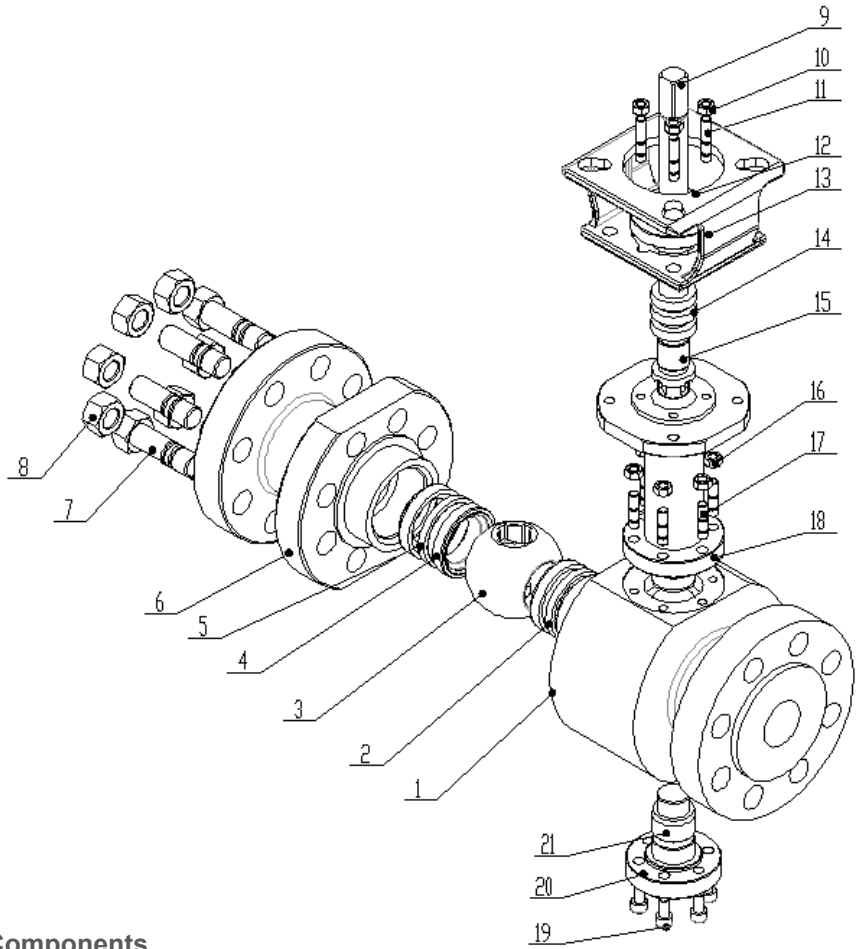


Table 1: Key Components

TYPE	Two and 3 piece Full Port Ball Valve
BODY SIZE	1/2" (DN15) ~ 18" (DN450) Standard
PLUG CHARACTERISTIC	On/Off, Full Port Ball
PRESSURE CLASSES	Class 600 ~ Class 1500 Standard, HG PN100, 160, 250
BODY CONNECTIONS	ASME 16.5, RF, RTJ, MFM
TEMPERATURE RANGE	-50°F (46°C) to 932°F (500°C)
FACE TO FACE DIMENSIONS	<2" (DN50) Conform to B16.10, ≥ 2" (DN50) Conform to API 6D See Tables 6 to 10 for Detailed Dimensions
STEM PACKING	PTFE V-Ring, Graphite
BODY GASKET	316ss with Grafoil®

Notes:

- Optional sizes and ratings are available, consult factory.

PERFORMANCE DATA

SHUTOFF PERFORMANCE

Table 1.1: 1/2" (DN15) ~ 18" (DN250) Soft Seat

Ball Material (wrought)	304, 316
Ball Treatment	—
Seat Ring Assembly	304 + Filled PTFE, 316 + Filled PTFE
Seat Leakage	API 598 (resilient seat)
Operating temperature □	Standard: —20°F (29°C) ~ +302°F (150°C)

Table 1.2: 1/2" (DN15) ~ 18" (DN450) Hard Seat

Ball Material (wrought)	304, 316
Ball Treatment	Nitride Hardened
Seat material	304, 316
Seat treatment	Stellite®
Seat Leakage	API 598 (hard seat)
Operating temperature	Standard: —50°F (-46°C) ~ +932°F (500°C)

Notes:

- Optional materials such duplex, super duplex, Inconel, Hastelloy, carbon steel with Inconel Cladding, epoxy coating, etc. can be supplied according to client's requirements.
- Optional HVOF, spray and fuse, and vapor deposition coatings can be supplied on the ball and seat according to client's requirements.
- Soft seat materials such as RPTFE, PCTFE, and PEEK are available
- Soft seats are typically applied to 600# Class valves. Consult Factory for special applications.

Table 2: Torque Values

Body size, inch (mm)		1" (25)	1.5" (40)	2" (50)	2.5" (65)	3" (80)	4" (100)	5" (125)		
Body Ratings	PN/ASME	100/600	N-m	88	173	318	388	625	1087	2028
			ft-lb	65	128	235	286	461	802	1496
		160/900	N-m	123	242	445	543	875	1521	2839
			ft-lb	91	178	328	400	645	1122	2094
		250/1500	N-m	173	339	622	761	1225	2130	3974
			ft-lb	128	250	459	561	904	1571	2931
Body size, inch (mm)		6" (150)	8" (200)	10" (250)	12" (300)	14" (350)	16" (400)	18" (450)		
Body Ratings	PN/ASME	100/600	N-m	3443	6220	9690	15102	18290	29453	34020
			ft-lb	2539	4588	7147	11139	13490	21723	25092
		160/900	N-m	4820	8708	12684	21143	25606	41234	47628
			ft-lb	3555	6423	9355	15594	18886	30413	35129
		250/1500	N-m	6747	12191	17757	29601	—	—	—
			ft-lb	4976	8992	13097	21833	—	—	—

Notes:

- Recommend adding 30% to 50% torque when having steam or dry gas media in the valve.
- Consult Factory for sizes and ratings not shown.
- Shutoff torques are based on full valve pressure ratings

G3010 FULL PORT BALL VALVES

MATERIALS OF CONSTRUCTION

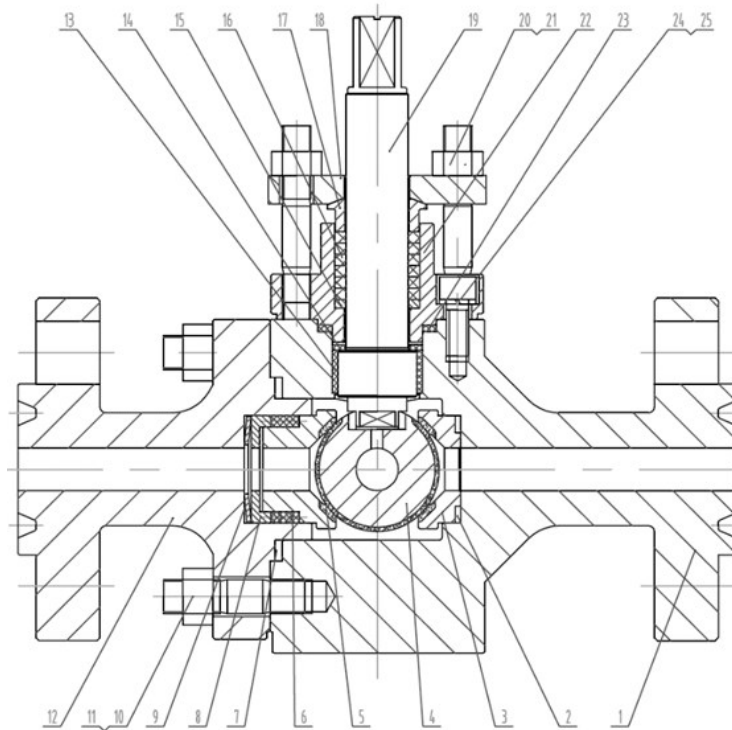


Table 3: Materials of Construction for Floating Ball Designs 1/2" (DN15) ~ 3/4" (DN20)

Item	Part name	Material
1	Main body	A350-LF2, A105, A182 F304, A182 F316
2	Sealing Ring	FKM, Graphite
3	Back seat ring	See table 1.1, 1.2
4	Ball	See table 1.1, 1.2
5	Front seat ring	See table 1.1, 1.2
6	Sealing Ring	FKM, Graphite
7	Spiral wound gasket	316+GRAF.
8	Seal seat bracket	304, 316 etc.
9	Seat Energizing Spring Assembly	304, 316, Inconel 718 etc.
10	Body Stud	A193-B8, B8M, B7, B16
11	Body Nut	A194-B8, B8M, 2H, Gr.4
12	Secondary body	A350-LF2, A105, A182 F304, A182 F316
13	Guide bearing	compound material, high nickel iron
14	Thrust washer	compound material, high nickel iron
15	Packing seat	304, 316
16	Packing	PTFE, Graphite
17	Packing gland	304
18	Gland flange	CF8
19	Shaft	316, A17-4PH
20	Packing Nut	A194-B8, B8M, 2H, Gr.4
21	Packing Stud	A193-B8, B8M, B7, B16
22	Bonnet	A350-LF2, A105, A182 F304, A182 F316
23	Spiral wound gasket	316+GRAF.
24	Spring washer	A194-B8, B8M, 2H, Gr.4
25	Hexagon socket cap screws	A193-B8, B8M, B7, B16

Notes:

- Optional materials are available, consult the factory
- Valve internals are supplied to equivalent ASTM/JIS/DIN/GE equivalent
- NACE certification is available.

G3010 FULL PORT BALL VALVES

MATERIALS OF CONSTRUCTION

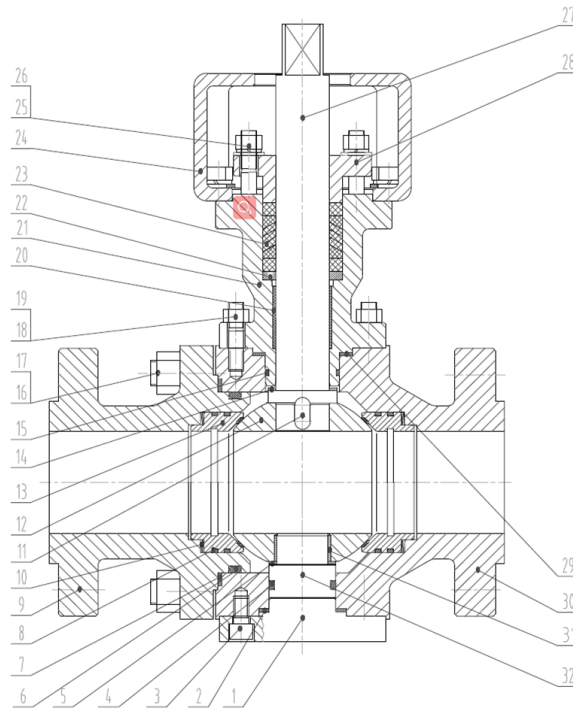


Table 4: Materials of Construction Valve Size ≤ 1" ~ 4" (DN100)

Item	Part name	Material
1	Bottom Cover	A350-LF2, A105, A182 F304, A182 F316
2	Spiral Wound Gasket	316+GRAF.
3	Hexagon socket cap screws	A193-B8, B8M, B7, B16
4	Sealing-ring	FKM, Graphite
5	Bottom slide bearing	compound material, high nickel iron
6	Sealing-ring	FKM, Graphite
7	Spiral Wound Gasket	316+GRAF.
8	Sealing-ring	FKM, Graphite.
9	Secondary body	A350-LF2, A105, A182 F304, A182 F316
10	Seat Energizing Spring Assembly	304, 316, Inconel 718
11	Parallel key	304, 316
12	ball	See table 1.1, 1.2
13	Seat ring	See table 1.1, 1.2
14	Top slide bearing	Compound material, high nickel iron
15	Sealing-ring	FKM, Graphite
16	Body Stud	A193-B8, B8M, B7, B16
17	Body Nut	A194-B8, B8M, 2H, Gr.4
18	Bonnet Stud	A193-B8, B8M, B7, B16
19	Bonnet Nut	A194-B8, B8M, 2H, Gr.4
20	Guide bearing	Compound material, high nickel iron
21	Bonnet	A350-LF2, A105, A182 F304, A182 F316
22	Packing seat	304, 316
23	Packing	PTFE, Graphite
24	Actuator Mounting Bracket	WCB
25	Packing Nut	A194-B8, B8M, 2H, Gr.4
26	Packing Stud	A193-B8, B8M, B7, B16
27	Shaft	316, 17-4 PH
28	Packing gland	304
29	Spiral Wound Gasket	316+GRAF.
30	Main body	A350-LF2, A105, A182 F304, A182 F316
31	Guide bearing	Compound material, high nickel iron
32	Counter Shaft	316, A564-630

Notes:

- Optional materials are available, consult the factory
- Valve internals are supplied to equivalent ASTM/JIS/DIN/GE equivalent
- NACE certification is available.

G3010 FULL PORT BALL VALVES

MATERIALS OF CONSTRUCTION

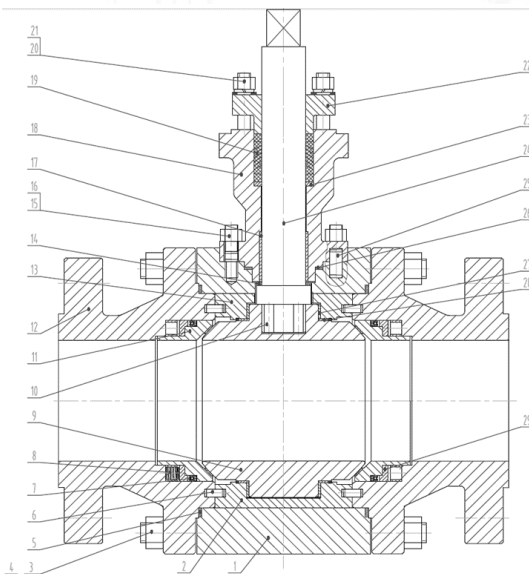


Table 5: Materials of Construction, Valve Size ≤ 5" (DN125)

Item	Part name	Material
1	Main body	A350-LF2, A105, A182 F304, A182 F316
2	Bottom bearing retainer	304,316 etc.
3	Body Stud	A193-B8, B8M, B7, B16
4	Body Nut	A194-B8, B8M, 2H, Gr.4
5	Spiral Wound Gasket	316+GRAF.
6	Straight pin	304
7	Sealing-ring	FKM, Graphite
8	Seat Energizing Spring Assembly	304, 316 . Inconel 718
9	ball	See table 1.1, 1.2
10	Straight pin	304,316,A564-630
11	Seat ring	See table 1.1, 1.2
12	Secondary body	A350-LF2, A105, A182 F304, A182 F316
13	Top bearing retainer	304,316 etc.
14	Top slide bearing	compound material, high nickel iron
15	Bonnet Stud	A193-B8, B8M, B7, B16
16	Bonnet Nut	A194-B8, B8M, 2H, Gr.4
17	Guide bearing	Compound material, high nickel iron
18	Bonnet	A350-LF2, A105, A182 F304, A182 F316
19	Packing	PTFE, Graphite
20	Packing Nut	A194-B8, B8M, 2H, Gr.4
21	Packing Stud	A193-B8, B8M, B7, B16
22	Packing gland	304
23	Packing seat	304
24	Shaft	316. A564-630
25	Straight pin	304
26	Spiral Wound Gasket	316+GRAF.
27	Guide bearing	Compound material, high nickel iron
28	Bottom slide bearing	compound material, high nickel iron
29	Seal seat bracket	304, 316 etc.

Notes:

1. Optional materials are available, consult the factory
2. Valve internals are supplied to equivalent ASTM/JIS/DIN/GE equivalent
3. NACE certification is available.

DIMENSIONS AND WEIGHTS

WITH PNEUMATIC ACTUATOR

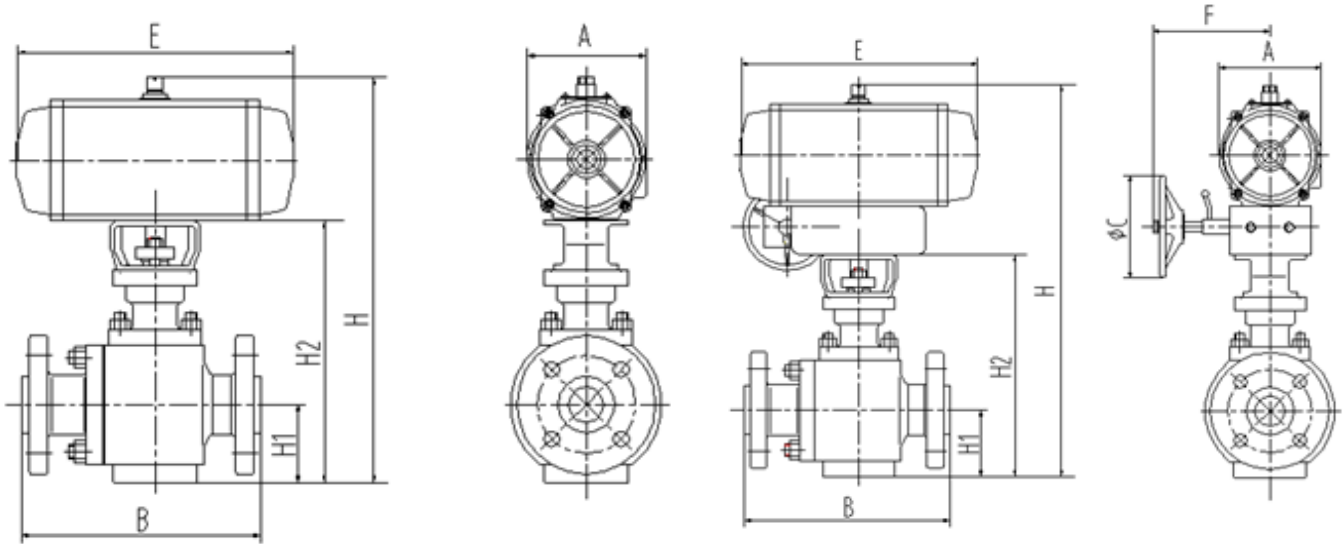


Figure 6: Overall Drawing With and Without Handwheel For 1/2" DN15~3"DN80

Table 6.1: Dimensions Valve Size ≤ 3" (DN80), Class 600 PN100

Size	(0.4MPa) Actuator	B(RF FM)	B(RJ)	H w/out HW	H With HW	H1	H2	E	F With HW	A	C Φ	kg w/out HW	kg w/HW
DN15	RB125-SR-K4/K5	190	190	613	741	58	292	335	190	160	290	21	28
	RB100-DA	190	190	578	686	58	292	274	155	140	180	17	21
DN20	RB125-SR-K4/K5	190	190	613	741	58	292	335	190	160	290	24	31
	RB100-DA	190	190	578	686	58	292	274	155	140	180	20	24
DN25	RB160-SR-K4/K5	216	216	662	790	82	302	452	190	206	290	40	47
	RB125-DA	216	216	623	751	82	302	335	190	160	290	25	32
DN32	RB160-SR-K4/K5	229	229	720	848	101	360	452	190	206	290	44	51
	RB125-DA	229	229	681	809	101	360	335	190	160	290	29	36
DN40	RB200-SR-K4/K5	241	241	775	934	101	360	550	230	244	340	75	90
	RB160-DA	241	241	720	848	101	360	452	190	206	290	40	47
DN50	RB200-SR-K4/K5	292	295	804	963	116	389	550	230	244	340	100	115
	RB254-SR-K4/K5	292	295	841	1022	116	389	598	292	260	500	125	152
	RB160-DA	292	295	749	877	116	389	452	190	206	290	65	72
DN65	RB254-SR-K4/K5	330	333	866	1047	117	414	598	292	260	500	130	157
	RB200-DA	330	333	829	988	117	414	550	230	244	340	97	112
DN80	RB254-SR-K4/K5	356	359	912	1093	116	460	598	292	260	500	141	168
	RB280-SR-K8/K10	356	359	950	1131	116	460	772	292	294	500	179	206
	RB200-DA	356	359	875	1034	116	460	550	230	244	340	108	123

Notes:

1. Dimensions are in mm
2. For alternate sizes and actuators not shown, consult the Factory

DIMENSIONS AND WEIGHTS

WITH PNEUMATIC ACTUATOR

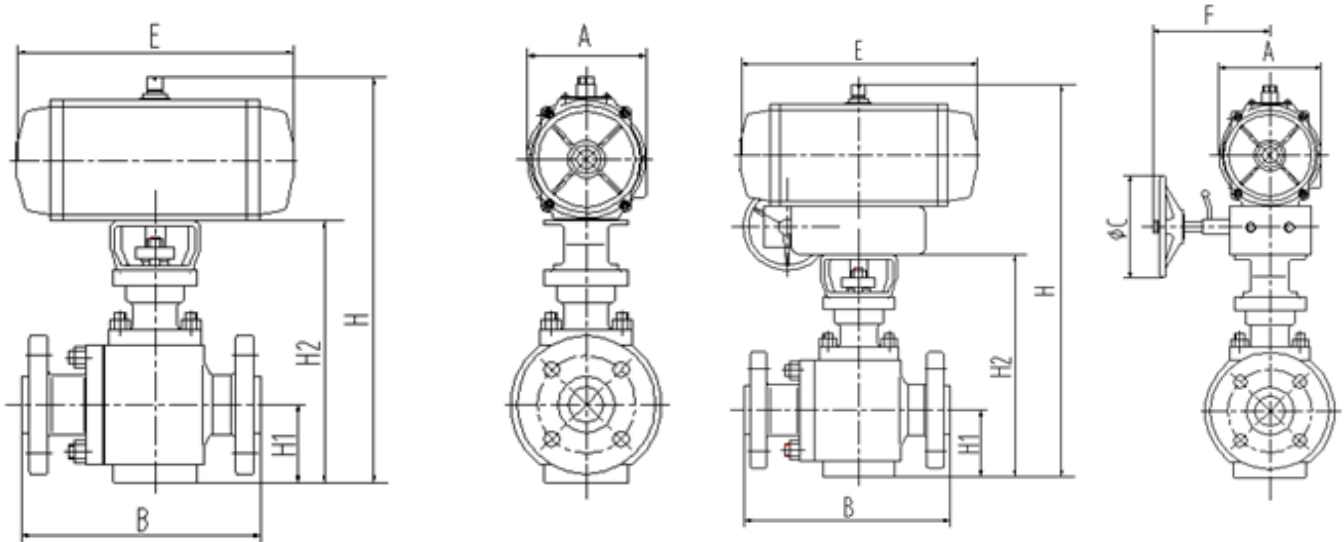


Figure 6: Overall Drawing With and Without handwheel For 1/2" DN15~3"DN80

Table 6.2: Dimensions Valve Size ≤ 3" (DN80), Class 600

Size	(0.4MPa) Actuator	B(RF FM)	B(RJ)	H w/out HW	H With HW	H1	H2	E	F With HW	A	C Φ	lb. w/out HW	lb. w/HW
1/2"	RB125-SR-K4/K5	7.50	7.50	24.1	29.2	2.3	11.5	13.2	7.5	6.3	11.4	46	62
	RB100-DA	7.50	7.50	22.8	27.0	2.3	11.5	10.8	6.1	5.5	7.1	37	46
3/4"	RB125-SR-K4/K5	7.50	7.50	24.1	29.2	2.3	11.5	13.2	7.5	6.3	11.4	53	68
	RB100-DA	7.50	7.50	22.8	27.0	2.3	11.5	10.8	6.1	5.5	7.1	44	53
1"	RB160-SR-K4/K5	8.50	8.50	26.1	31.1	3.2	11.9	17.8	7.5	8.1	11.4	88	103
	RB125-DA	8.50	8.50	24.5	29.6	3.2	11.9	13.2	7.5	6.3	11.4	55	70
1.25"	RB160-SR-K4/K5	9.00	9.00	28.3	33.4	4.0	14.2	17.8	7.5	8.1	11.4	97	112
	RB125-DA	9.00	9.00	26.8	31.9	4.0	14.2	13.2	7.5	6.3	11.4	64	79
1.5"	RB200-SR-K4/K5	9.50	9.50	30.5	36.8	4.0	14.2	21.7	9.1	9.6	13.4	165	198
	RB160-DA	9.50	9.50	28.3	33.4	4.0	14.2	17.8	7.5	8.1	11.4	88	103
2"	RB200-SR-K4/K5	11.50	11.62	31.7	37.9	4.6	15.3	21.7	9.1	9.6	13.4	220	253
	RB254-SR-K4/K5	11.50	11.62	33.1	40.2	4.6	15.3	23.5	11.5	10.2	19.7	275	334
	RB160-DA	11.50	11.62	29.5	34.5	4.6	15.3	17.8	7.5	8.1	11.4	143	158
2.5"	RB254-SR-K4/K5	13.00	13.12	34.1	41.2	4.6	16.3	23.5	11.5	10.2	19.7	286	345
	RB200-DA	13.00	13.12	32.6	38.9	4.6	16.3	21.7	9.1	9.6	13.4	213	246
3"	RB254-SR-K4/K5	14.00	14.13	35.9	43.0	4.6	18.1	23.5	11.5	10.2	19.7	310	370
	RB280-SR-K8/K10	14.00	14.13	37.4	44.5	4.6	18.1	30.4	11.5	11.6	19.7	394	453
	RB200-DA	14.00	14.13	34.4	40.7	4.6	18.1	21.7	9.1	9.6	13.4	238	271

Notes:

1. Dimensions are in inches
2. For alternate sizes and actuators not shown, consult the Factory

DIMENSIONS AND WEIGHTS

WITH PNEUMATIC ACTUATOR

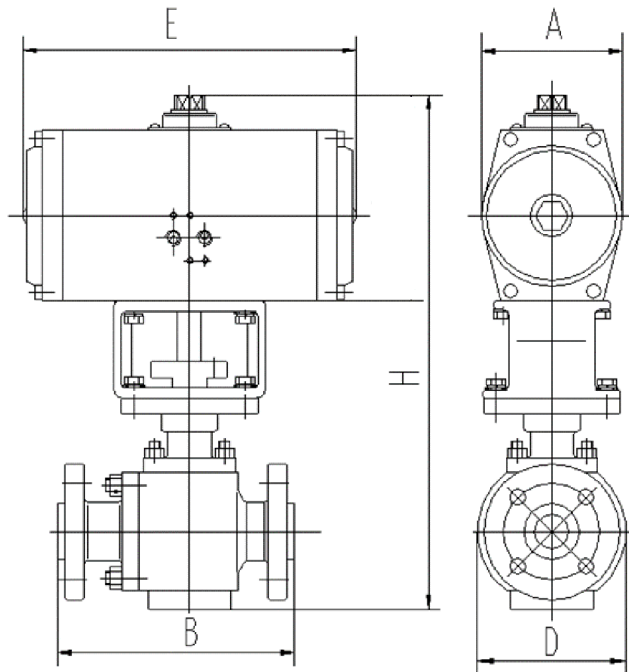


Figure 7: Overall drawing without handwheel For 1/2" DN15~4"DN100

Table 7.1: Dimensions Valve Size ≤ 4" (DN100), Class 600 PN100 With and Without Extension Bonnets

Body Size inch (mm)	Model	Actuator						Outline dimension							
		E		A		h		B		D		H			
		inch	mm	inch	mm	inch	mm	inch	mm	inch	mm	inch	mm	inch	mm
1" (25)	RB125-SR	13.4	340	5.9	150	7.5	190	8.50	216	5.9	150	18.5	470	22.8	580
	RB100-DA	10.7	272	5.1	130	6.6	168					17.6	448	22.0	558
1.5" (40)	RB160-SR	17.8	452	7.6	193	9.3	235	9.50	241	8.7	220	22.4	570	27.6	700
	RB200-SR	22.4	570	8.7	220	10.6	270					23.8	605	28.9	735
	RB100-DA	10.7	272	5.1	130	6.6	168					19.8	503	24.9	633
	RB125-DA	13.4	340	5.9	150	7.5	190					20.9	530	26.0	660
2" (50)	RB200-SR	22.4	570	8.7	220	10.6	270	11.50	290	9.0	229	25.2	640	28.9	735
	RB254-SR	27.4	695	11.4	290	14.2	360					28.7	730	32.5	825
	RB160-DA	17.8	452	7.6	193	9.3	235					23.8	605	27.6	700
2.5" (65)	RB254-SR	27.4	695	11.4	290	14.2	360	13.00	330	11.4	290	28.7	730	32.5	825
	RB160-DA	17.8	452	7.6	193	9.3	235					23.8	605	27.6	700
3" (80)	RB254-SR	27.4	695	11.4	290	14.2	360	14.00	356	11.4	290	28.7	730	32.7	830
	RB200-DA	22.4	570	8.7	220	10.6	270					25.2	640	29.1	740
4" (100)	RB280-SR	27.8	706	11.8	300	14.2	360	17.00	432	12.8	324	28.5	725	38.6	980
	RB300-SR	31.2	792	12.8	324	15.0	380					29.3	745	39.4	1000
	RB254-DA	27.4	695	11.4	290	14.2	360					28.5	725	38.6	980

Notes:

1. For sizes and ratings not shown, optional size and ratings are available, consult the factory
2. Face to face dimensions are for RF Flange .

DIMENSIONS AND WEIGHTS

WITH PNEUMATIC ACTUATOR

Table 7.2: Dimensions Valve Size ≤ 4" (DN100), Class 900 PN160 With and Without Extension Bonnets

Body Size inch (mm)	Model	Actuator						Outline dimension							
		E		A		h		B		D		H			
		inch	mm	inch	mm	inch	mm	inch	mm	inch	mm	Nor. Temp.		High Temp.	
1" (25)	RB125-SR	13.4	340	5.9	150	7.5	190	10.0	254	7.6	193	18.3	465	22.6	575
	RB100-DA	10.7	272	5.1	130	6.6	168					17.5	445	21.9	555
1.5" (40)	RB200-SR	22.4	570	8.7	220	10.6	270	12.0	305	11.4	290	22.8	580	28.0	710
	RB125-DA	13.4	340	5.9	150	7.5	190					19.7	500	24.8	630
	RB160-DA	17.8	452	7.6	193	9.3	235					18.3	465	22.6	575
2" (50)	RB200-SR	22.4	570	8.7	220	10.6	270	14.5	368	11.8	300	25.2	640	29.1	740
	RB254-SR	27.4	695	11.4	290	14.2	360					28.7	730	31.3	795
	RB160-DA	17.8	452	7.6	193	9.3	235					23.8	605	27.8	705
2.5" (65)	RB254-SR	27.4	695	11.4	290	14.2	360	16.5	419	11.8	300	28.7	730	32.7	830
	RB160-DA	17.8	452	7.6	193	9.3	235					23.8	605	27.8	705
	RB200-DA	22.4	570	8.7	220	10.6	270					25.2	640	29.1	740
3" (80)	RB254-SR	27.4	695	11.4	290	14.2	360	15.0	381	11.8	300	28.7	730	32.7	830
	RB280-SR	27.8	706	11.8	300	14.2	360					28.7	730	32.7	830
	RB200-DA	22.4	570	8.7	220	10.6	270					25.2	640	29.1	740
4" (100)	RB300-SR	31.2	792	12.8	324	15.0	380	18.0	457	15.3	388	38.4	975	43.9	1115
	RB350-SR	33.5	850	15.3	388	17.3	440					40.7	1035	40.7	1035
	RB254-DA	27.4	695	11.4	290	14.2	360					37.6	955	43.1	1095

Table 7.3: Dimensions Valve Size ≤ 4" (DN100), Class 1500 PN250 With and Without Extension Bonnets

Body Size inch (mm)	Model	Actuator						Outline dimension							
		L		B		h		A		D		H			
		inch	mm	inch	mm	inch	mm	inch	mm	inch	mm	Nor. Temp.		High Temp.	
1" (25)	RB160-SR	17.8	452	7.6	193	9.3	235	10.0	254	9.6	245	20.1	510	24.4	620
	RB200-SR	22.4	570	8.7	220	10.6	270					21.5	545	25.8	655
	RB100-DA	10.7	272	5.1	130	6.6	168					17.6	448	18.0	458
	RB125-DA	13.4	340	5.9	150	7.5	190					18.5	470	22.8	580
1.5" (40)	RB200-SR	22.4	570	8.7	220	10.6	270	12.0	305	14.2	360	27.6	701	36.7	931
	RB254-SR	27.4	695	11.4	290	14.2	360					31.1	791	36.3	921
	RB160-DA	17.8	452	7.6	193	9.3	235					26.2	666	31.3	796
2" (50)	RB254-SR	27.4	695	11.4	290	14.2	360	14.5	368	16.7	425	32.2	817	35.9	912
	RB160-DA	17.8	452	7.6	193	9.3	235					27.2	692	31.0	787
	RB200-DA	22.4	570	8.7	220	10.6	270					28.6	727	32.4	822
2.5" (65)	RB254-SR	27.4	695	11.4	290	14.2	360	16.5	419	16.7	425	32.3	820	36.2	920
	RB280-SR	27.8	706	11.8	300	14.2	360					32.3	820	36.2	920
	RB200-DA	22.4	570	8.7	220	10.6	270					28.7	730	32.7	830
3" (80)	RB300-SR	31.2	792	12.8	324	15.0	380	18.5	470	16.7	425	33.1	840	37.0	940
	RB254-DA	27.4	695	11.4	290	14.2	360					32.3	820	36.2	920
4" (100)	RB350-SR	33.5	850	15.3	388	17.3	440	21.5	546	18.1	460	41.5	1054	47.0	1194
	RB254-DA	27.4	695	11.4	290	14.2	360					38.3	974	43.9	1114
	RB280-DA	27.8	706	11.8	300	14.2	360					38.3	974	43.9	1114

Notes:

- For sizes and ratings not shown, optional size and ratings are available, consult the factory
- Face to face dimensions are for RF Flange .

DIMENSIONS AND WEIGHTS

WITH PNEUMATIC ACTUATOR

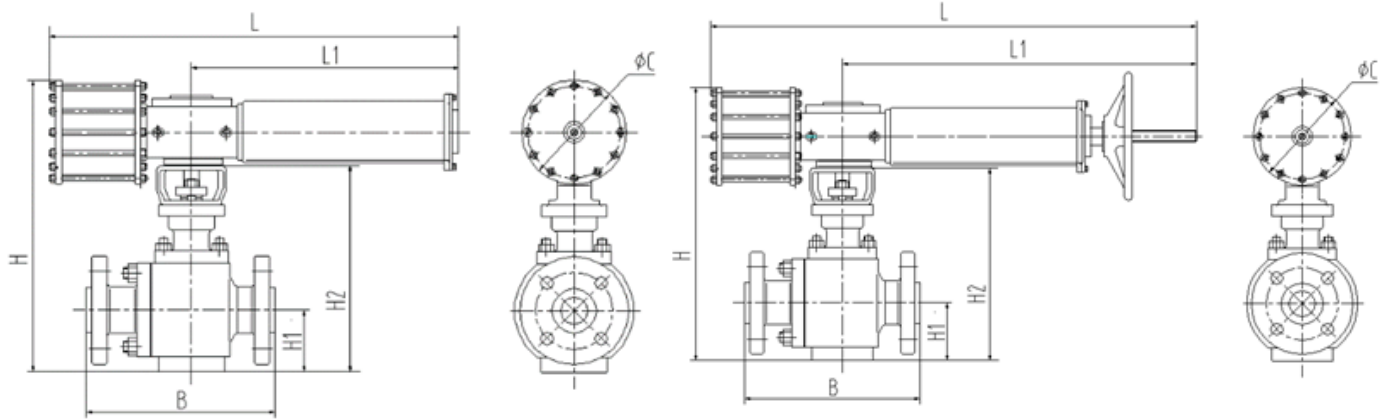


Figure 8: Overall Drawing With and Without handwheel For 4" DN100~10" DN250

Table 8.1: Dimensions Valve Size \geq 4" (DN80), Class 600 PN100 Scotch Yoke Actuator

Size	(0.4MPa) Actuator	B (RF FM)	B (RJ)	H w/out HW	H w/HW	H1	H2	L w/out HW	L1 w/out HW	L w/HW	L1 w/HW	C Φ	kg w/out HW	kg w/HW
DN100	ZSH-B08-251-SRC4/O4(SRC5/O5)	432	435	1000	1000	139	561	1528	923	1928	1323	280	346	406
	ZSH-B08-281-SRC4/O4(SRC5/O5)	432	435	1015	1015	139	561	1528	923	1928	1323	310	378	438
	ZSH-B08-221-DA	432	435	985	985	139	561	815	605	1215	605	250	228	288
DN125	ZSH-B1-281-SRC4/O4(SRC5/O5)	508	511	1069	1069	175	611	1690	1010	2090	1410	310	568	628
	ZSH-B1-321-SRC4/O4(SRC5/O5)	508	511	1114	1114	175	611	1690	1030	2090	1430	395	604	664
	ZSH-B08-251-DA	508	511	1050	1050	175	611	815	605	1215	605	280	412	472
DN150	ZSH-B1-351-SRC4/O4(SRC5/O5)	559	562	1240	1240	190	722	1710	1050	2110	1450	430	671	731
	ZSH-B1-401-SRC4/O4(SRC5/O5)	559	562	1275	1275	190	722	1730	1070	2130	1470	500	707	767
	ZSH-B1-281-DA	559	562	1180	1180	190	722	925	680	1325	680	310	491	551
DN200	ZSH-B2-451-SRC4/O4(SRC5/O5)	660	664	1412	1412	252	822	2025	1250	2425	1650	550	1008	1068
	ZSH-B3-451-SRC4/O4(SRC5/O5)	660	664	1432	1432	252	822	2243	1328	2643	1728	550	1260	1320
	ZSH-B1-351-DA	660	664	1340	1340	252	822	905	660	1305	660	430	636	696
	ZSH-B2-351-DA	660	664	1352	1352	252	822	1055	775	1455	775	430	696	756
DN250	ZSH-B3-501-SRC4/O4(SRC5/O5)	787	791	1565	1565	302	930	2263	1348	2663	1748	600	1492	1552
	ZSH-B3-561-SRC4/O4(SRC5/O5)	787	791	1595	1595	302	930	2323	1408	2723	1808	660	1600	1660
	ZSH-B2-401-DA	787	791	1495	1495	302	930	1055	775	1455	775	500	880	940

Notes:

1. Dimensions are in mm
2. For sizes and ratings not shown, optional size and ratings are available, consult the factory

DIMENSIONS AND WEIGHTS

WITH PNEUMATIC ACTUATOR

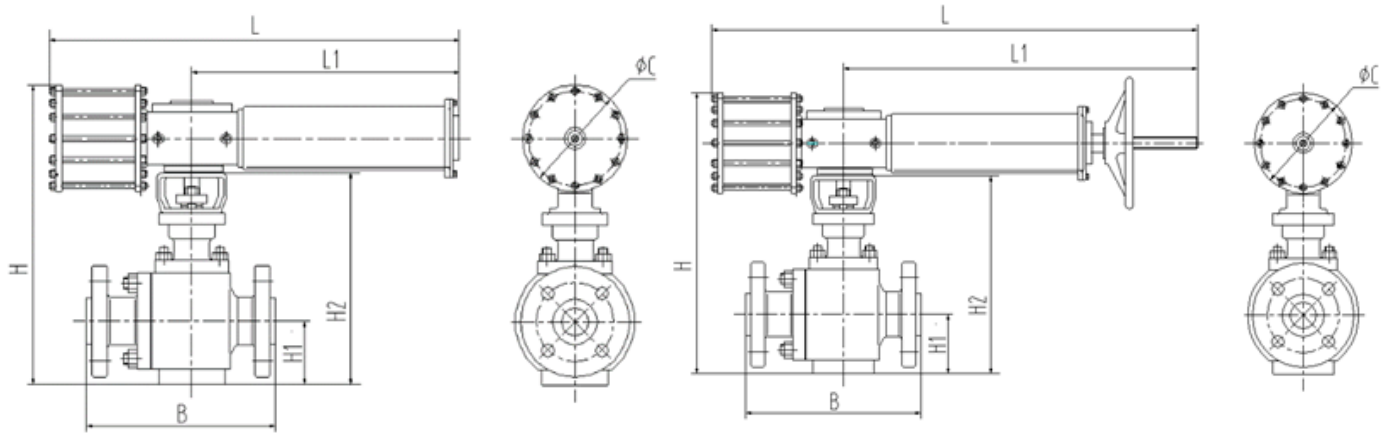


Figure 8: Overall Drawing With and Without Handwheel For 4" DN100~10" DN250

Table 8.3: Dimensions Valve Size \geq 4" (DN80), Class 600 Scotch Yoke Actuator

Size	(0.4MPa) Actuator	B (RF FM)	B (RJ)	H w/out HW	H w/HW	H1	H2	L w/out HW	L1 w/out HW	L w/HW	L1 w/HW	C Φ	lb. w/out HW	lb. w/HW
4"	ZSH-B08-251-SRC4/O4(SRC5/O5)	17.00	17.13	39.4	39.4	5.5	22.1	60.2	36.3	75.9	52.1	11.0	761	893
	ZSH-B08-281-SRC4/O4(SRC5/O5)	17.00	17.13	40.0	40.0	5.5	22.1	60.2	36.3	75.9	52.1	12.2	832	964
	ZSH-B08-221-DA	17.00	17.13	38.8	38.8	5.5	22.1	32.1	23.8	47.8	23.8	9.8	502	634
5"	ZSH-B1-281-SRC4/O4(SRC5/O5)	20.00	20.13	42.1	42.1	6.9	24.1	66.5	39.8	82.3	55.5	12.2	1250	1382
	ZSH-B1-321-SRC4/O4(SRC5/O5)	20.00	20.13	43.9	43.9	6.9	24.1	66.5	40.6	82.3	56.3	15.6	1329	1461
	ZSH-B08-251-DA	20.00	20.13	41.3	41.3	6.9	24.1	32.1	23.8	47.8	23.8	11.0	906	1038
6"	ZSH-B1-351-SRC4/O4(SRC5/O5)	22.00	22.13	48.8	48.8	7.5	28.4	67.3	41.3	83.1	57.1	16.9	1476	1608
	ZSH-B1-401-SRC4/O4(SRC5/O5)	22.00	22.13	50.2	50.2	7.5	28.4	68.1	42.1	83.9	57.9	19.7	1555	1687
	ZSH-B1-281-DA	22.00	22.13	46.5	46.5	7.5	28.4	36.4	26.8	52.2	26.8	12.2	1080	1212
8"	ZSH-B2-451-SRC4/O4(SRC5/O5)	26.00	26.13	55.6	55.6	9.9	32.4	79.7	49.2	95.5	65.0	21.7	2218	2350
	ZSH-B3-451-SRC4/O4(SRC5/O5)	26.00	26.13	56.4	56.4	9.9	32.4	88.3	52.3	104.1	68.0	21.7	2772	2904
	ZSH-B1-351-DA	26.00	26.13	52.8	52.8	9.9	32.4	35.6	26.0	51.4	26.0	16.9	1399	1531
	ZSH-B2-351-DA	26.00	26.13	53.2	53.2	9.9	32.4	41.5	30.5	57.3	30.5	16.9	1531	1663
10"	ZSH-B3-501-SRC4/O4(SRC5/O5)	31.00	31.13	61.6	61.6	11.9	36.6	89.1	53.1	104.8	68.8	23.6	3282	3414
	ZSH-B3-561-SRC4/O4(SRC5/O5)	31.00	31.13	62.8	62.8	11.9	36.6	91.5	55.4	107.2	71.2	26.0	3520	3652
	ZSH-B2-401-DA	31.00	31.13	58.9	58.9	11.9	36.6	41.5	30.5	57.3	30.5	19.7	1936	2068

Notes:

1. Dimensions are in inches
2. For sizes and ratings not shown, optional size and ratings are available, consult the factory

DIMENSIONS AND WEIGHTS

WITH PNEUMATIC ACTUATOR

Figure 9: Overall Drawing Without Handwheel
For 5" DN125~10" DN250

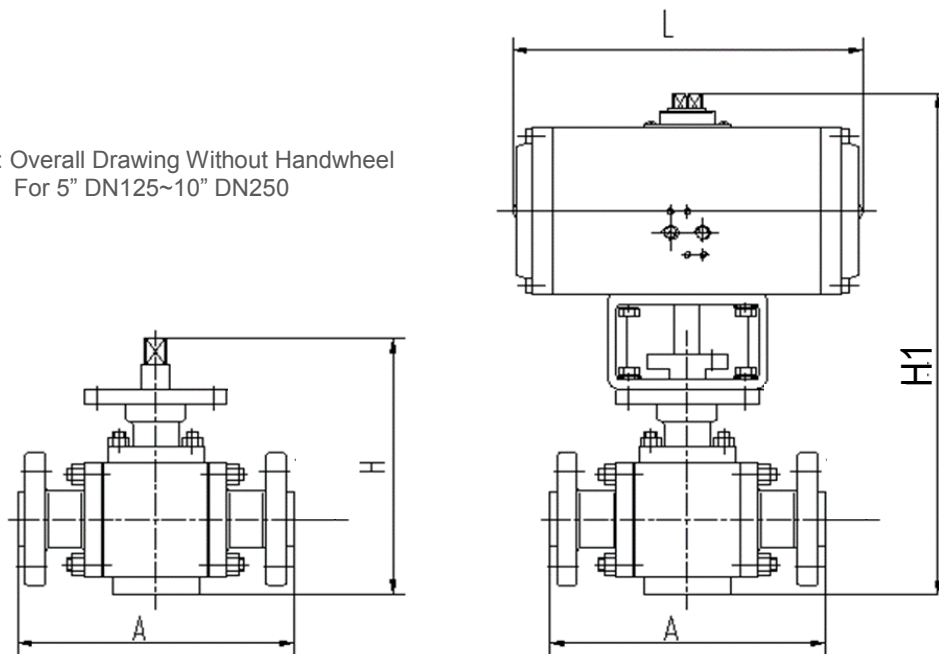


Table 9.1: Dimensions Valve Size \geq 5" (DN150) ~ 10" (DN250)

Body size inch (mm)	Body ratings	Actuator Model	Outline dimension					
			A		H		H1	
			inch	mm	inch	mm	inch	mm
5" (125)	Class1500	RB300-DA	26.50	673	12.6	320	30.3	770
		RB350-DA					32.7	830
	Class900	RB300-DA	22.00	559	9.8	250	28.3	720
		RB350-SR					31.5	800
		RB254-DA					28.3	720
Class600	RB280-DA	28.3	720					
	—	—	—	—	—	—	—	
6" (150)	Class1500	—	27.75	705	16.5	420	—	—
	Class900	RB350-DA	24.00	610	11.8	300	33.3	845
	Class600	RB350-DA	22.00	559	11.8	300	33.3	845
		RB300-DA					32.1	815
8" (200)	Class1500	—	32.75	832	15.7	400	—	—
	Class900	—	29.00	737	13.8	350	—	—
	Class600	—	26.00	660	13.8	350	—	—
10" (250)	Class1500	—	39.00	991	17.7	450	—	—
	Class900	—	33.00	838	15.7	400	—	—
	Class600	—	31.00	787	15.7	400	—	—

Notes:

1. For size and ratings not shown, optional size and ratings are available, consult the factory
2. Scotch yoke, electric, and handwheel operated actuators are available.
3. Face to face dimensions are for RF Flanges.

DIMENSIONS AND WEIGHTS

WITHOUT ACTUATOR

Figure 6: Overall drawing without actuator
For 12" DN300~18" DN450

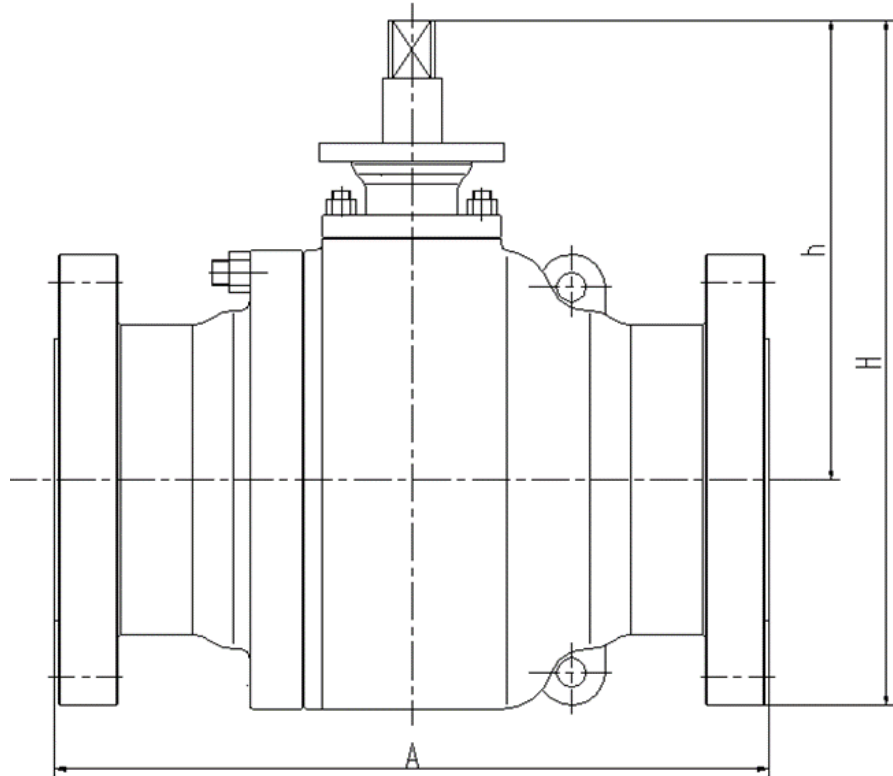


Table 6: Dimensions Valve Size 12" (DN300) ~ 18" (DN450)

Body size inch (mm)	Body ratings	Outline dimension					
		A		h		H	
		inch	mm	inch	mm	inch	mm
12" (300)	Class1500	44.50	1130	27.6	700	39.6	1006
	Class900	38.00	965	25.2	640	37.2	946
	Class600	33.00	838	25.2	640	37.2	946
14" (350)	Class900	40.50	1029	28.9	735	42.9	1090
	Class600	35.00	889	28.9	735	42.9	1090
16" (400)	Class900	44.50	1130	32.7	830	48.3	1228
	Class600	39.00	991	32.7	830	48.3	1228
18" (450)	Class900	48.00	1219	36.6	930	54.7	1390
	Class600	43.00	1092	36.6	930	54.7	1390

Notes:

1. For size and ratings not shown, optional size and ratings are available, consult the factory
2. Scotch yoke, electric, and handwheel operated actuators are available.
3. Valve to actuator mounting can be adapted to fit.

WHO WE ARE

WZI Flow Control, Ltd., a subsidiary of WuZhong Instrument Company, Ltd., began business in 1959. As China's largest control valve manufacturer, WZI has a state of the art 2.8M ft2 production, foundry and corporate office campus. With over 1000 employees, WZI is expanding globally with increased manu-facturing, sales and service capabilities to better serve our rapidly growing global customer base.

As a member of the highly acclaimed China Automation Group (www.cag.com.hk), WZI has successfully supplied over 1 million valves for the global market. With our 100% Testing and Serialization Program, WZI prides itself on our high quality, competitively priced products with superior delivery from our new sales and service center located in Houston, Texas. Our Southern California office designs new products and makes continuous improvements to our broad existing product offering.

LET'S WORK TOGETHER

Contact US



+1.832.328.7883



Sales@WZIFlowControl.com

www.WZIFlowControl.com

Location

USA Headquarters

5656 N. Sam Houston Pkwy E.,
Suite 150 Houston, Texas 77032 USA

WE'RE QUALIFIED

As a global manufacturing company, WZI Flow Control verifies that we are operating in full compliance with this partial list of industry standards. Our compliance includes additional standards not shown here. Please contact the factory for additional details.

ISO 9001

API Spec Q1

API 6DSS

API 607, 7th Edition

ISO 14001

API 6A

API 17D

API 6FA, 3rd Edition

OHSAS 18001

API 6D

API 609 Cat B

SIL-capable

QUALITY TRUST INTEGRITY

Disclaimer: The information and specifications contained in this literature are believed to be accurate, they are supplied for information purposes and should not be considered certified or a guaranty of satisfactory results by reliance thereon. Nothing contained in this literature is to be construed as a warranty or guaranty, express or implied. Because WZI Flow Control is continually improving our product, the specifications, dimensions, and information contained in this literature are subject to change without notice. Should any questions arise concerning these provisions, the purchaser or user should contact WZI Flow Control at the contact information given.

© 2020 WZI Flow Control, LTD. All rights reserved.