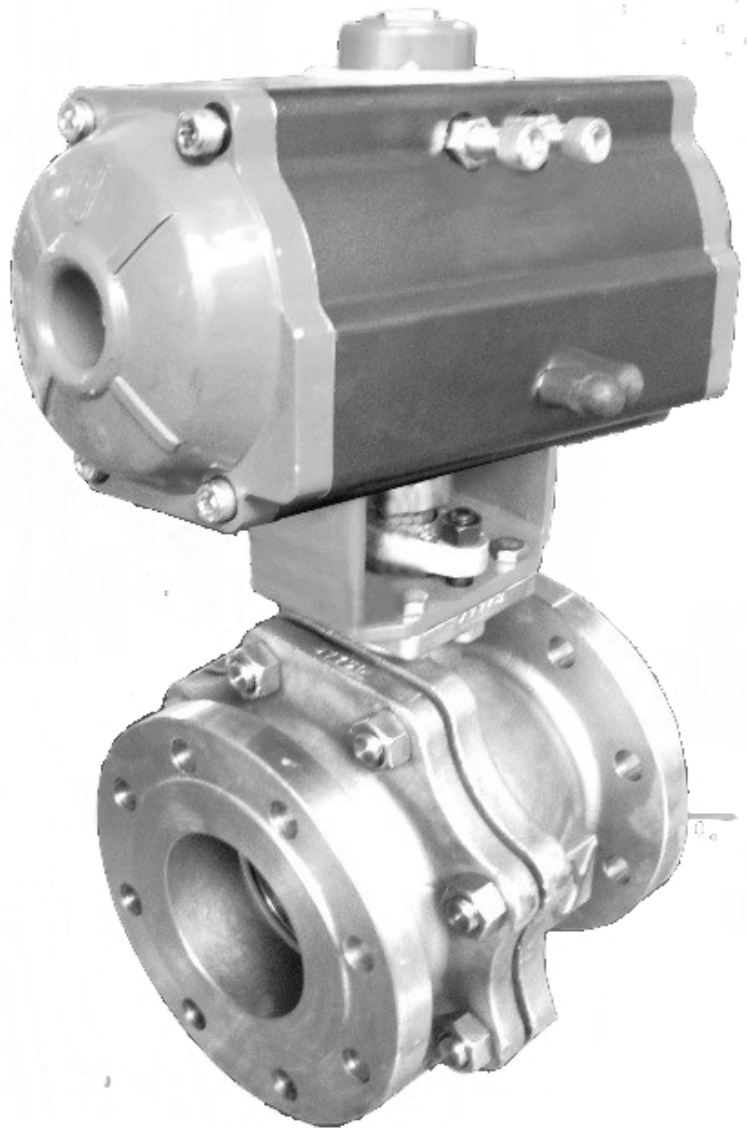


WZI FLOW CONTROL

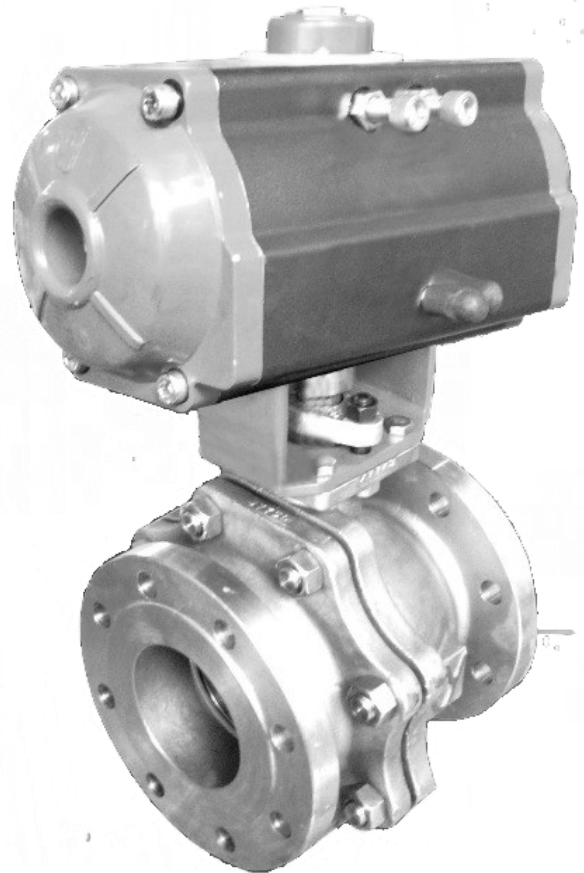


SERIES G1520

HARD SEATED FULL BORE BALL VALVES

TABLE OF CONTENTS

FEATURES.....	G1520 2
KEY COMPONENTS	G1520 3
VALVE SHUTOFF OPTIONS.....	G1520 4
VALVE TORQUE REQUIREMENTS.....	G1520 4
MATERIALS OF CONSTRUCTION.....	G1520 5-6
DIMENSIONS AND WEIGHTS.....	G1520 7-12
CONTACT INFORMATION.....	G1520 13

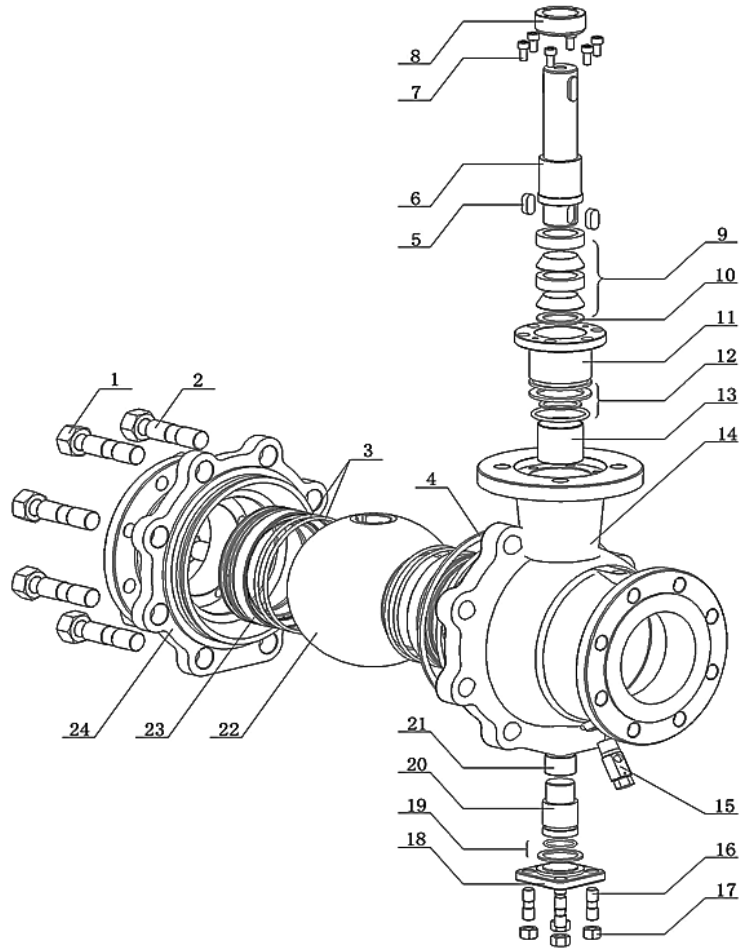


SERIES G1520 FEATURES

- Floating and Trunnion Mounted Two Piece Ball Valves
- Metal Seated Designs
- Class 150 to 400 and HG PN 16, 40, and 64
- Standard Valve Sizes 1/2" (DN15) ~ 24" (DN600)
- Firesafe Option to API 607 / 6FA
- Blowout Proof Stem
- SIL 2 Certified
- Shutoff to API 598, Hard Seat **Bi-Directional** (2" DN50 and Larger)
- Actuator Mounting to ISO 5211

G1520 FULL PORT BALL VALVES

KEY COMPONENTS



Key Components

TYPE	Two piece Full Port Ball Valve
BODY SIZE	1/2" (DN15) ~ 24" (DN600) Standard
PLUG CHARACTERISTIC	On/Off, Full Port Ball
PRESSURE CLASSES	Class 150 ~ Class 400, HG PN16, 40, 64
BODY CONNECTIONS	Raised Face Flange
TEMPERATURE RANGE	-20°F (-29°C) to 800°F (425°C)
FACE TO FACE DIMENSIONS	<2" (DN50) Conform to B16.10, ≥ 2" (DN50) Conform to API 6D See Tables 6 to 10 for Detailed Dimensions
STEM PACKING	PTFE V-Ring, Graphite
BODY GASKET	316ss with Grafoil®

Notes:

- Optional sizes and ratings are available, consult factory.

PERFORMANCE DATA

SHUTOFF PERFORMANCE

Table 1: 1/2" (DN15) ~ 24" (DN600) Hard Seat

Ball Material (wrought)	304, 316
Ball Treatment	Nitride, Spray Hardened
Seat material	304, 316
Seat treatment	Stellite®
Seat Leakage	API 598 (hard seat)
Operating temperature	Standard: —20°F (-29°C) ~ +800°F (432°C)

Notes:

- Optional materials such duplex, super duplex, Inconel, Hastelloy, carbon steel with Inconel Cladding, epoxy coating, etc. can be supplied according to client's requirements.
- Optional HVOF, spray and fuse, and vapor deposition coatings can be supplied on the ball and seat according to client's requirements.
- Consult the factory for Special Applications

Table 2: Torque Values

Body size, inch (mm)		1/2" (15)	3/4" (20)	1" (25)	1.25" (32)	1.5" (40)	2" (50)	2.5" (65)	3" (80)	4" (100)	5" (125)	
Body Ratings	16/150	N-m	13	18	25	35	49	90	110	177	308	440
		ft-lb	10	13	18	26	36	66	81	131	227	325
	24,40/300	N-m	18	25	35	49	69	126	154	248	431	704
		ft-lb	13	18	26	36	51	93	114	183	318	519
	64/400	N-m	25	35	49	69	96	176	216	347	604	1126
		ft-lb	18	26	36	51	71	130	159	256	445	830
Body size, inch (mm)		6" (150)	8" (200)	10" (250)	12" (300)	14" (350)	16" (400)	18" (450)	20" (500)	24" (600)		
Body Rating	16/150	N-m	850	1492	2237	3729	4516	7272	8400	9800	14600	
		ft-lb	627	1100	1650	2750	3331	5364	6196	7228	10768	
	24,40/300	N-m	1275	2238	3356	5594	6774	10909	12600	14700	21900	
		ft-lb	940	1651	2475	4126	4996	8046	9293	10842	16153	
	64/400	N-m	1913	3357	5033	8390	10161	16363	18900	22050	32850	
		ft-lb	1411	2476	3712	6188	7494	12069	13940	16263	24229	

Notes:

- Recommend adding 30% to 50% torque when having steam or dry gas media in the valve.
- Consult Factory for sizes and ratings not shown.
- Shutoff torques are based on full valve pressure ratings

G1520 FULL PORT BALL VALVES

MATERIALS OF CONSTRUCTION

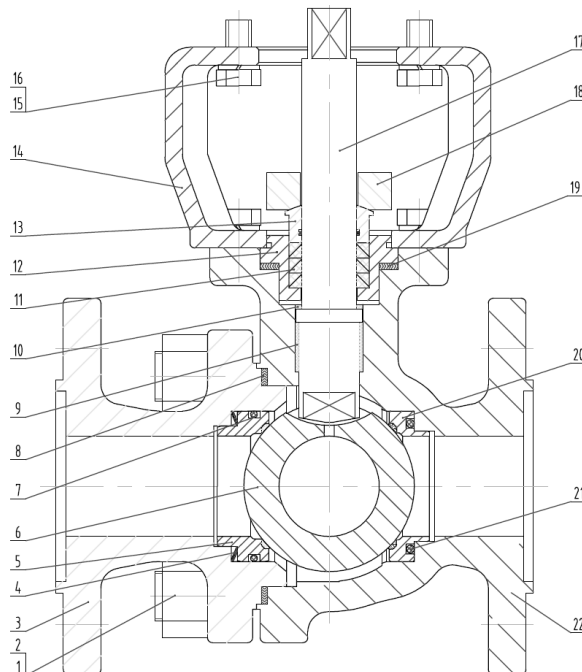


Table 3: Materials of Construction for Floating Ball Designs 1/2" (DN15) ~ 1.5" (DN40)

Item	Part name	Material
1	Body Stud	A193-B8, B8M, B7, B16
2	Body Nut	A194-B8, B8M, 2H, Gr.4
3	Secondary body	WCB/WCC/CF8/CF8M/CF3/CF3M
4	Seat Energizing Spring Assembly	304/316/Inconel718
5	Front seat ring	See Table 1
6	Ball	See Table 1
7	Sealing-ring	FKM, Graphite
8	Spiral Wound Gasket	316+GRAF.
9	Guide bearing	Compound material, high nickel iron
10	Slide bearing	Compound material, high nickel iron
11	Packing	PTFE, Graphite
12	Packing Stuffing-box	316, CF8M
13	Packing gland	304
14	Actuator Mounting Bracket	WCB
15	Hexagon bolt	A193-B8, B8M, B7, B16
16	Spring washer	stainless steel
17	Shaft	316, 17-4 PH
18	Gland flange	CF8
19	Spiral Wound Gasket	316+GRAF.
20	Back seat ring	304/316+Stellite®
21	Sealing-ring	FKM, Graphite.
22	Main body	WCB/WCC/CF8/CF8M/CF3/CF3M

Notes:

- Optional materials are available, consult the factory
- Valve internals are supplied to equivalent ASTM/JIS/DIN/GB equivalent
- NACE certification is available.

G1520 FULL PORT BALL VALVES

MATERIALS OF CONSTRUCTION

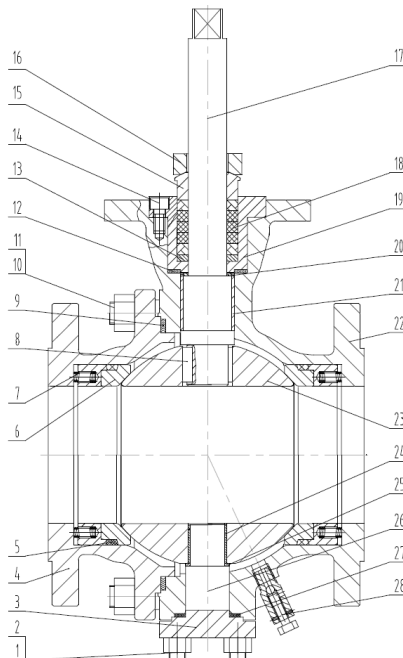


Table 4: Materials of Construction for Trunnion Mounted Ball Designs 2" (DN50) ~ 24" (DN600)

Item	Part name	Material
1	Bottom Cover Stud	A193-B8, B8M, B7, B16
2	Bottom Cover Nut	A194-B8, B8M, 2H, Gr.4
3	Bottom Cover	WCB/WCC/CF8/CF8M/CF3/CF3M
4	Secondary body	WCB/WCC/CF8/CF8M/CF3/CF3M
5	Sealing-ring	FKM, Graphite
6	Seat ring	See Table 1
7	Seat Energizing Spring Assembly	304/316/Inconel718
8	Parallel key	304, 316
9	Spiral Wound Gasket	A276-316+GRAF.
10	Body Stud	A193-B8, B8M, B7, B16
11	Body Nut	A194-B8, B8M, 2H, Gr.4
12	Spiral Wound Gasket	A276-316+GRAF.
13	Packing seat	304, 316
14	Hexagon socket cap screws	A193-B8, B8M, B7, B16
15	Packing gland	304
16	Gland flange	CF8
17	Shaft	316, 17-4 PH
18	Packing	PTFE, Graphite
19	Packing Stuffing-box	316, CF8M
20	Top slide bearing	Compound material, high nickel iron
21	Guide bearing	Compound material, high nickel iron
22	Spiral Wound Gasket	316+GRAF.
23	Main body	WCB/WCC/CF8/CF8M/CF3/CF3M
24	Ball	See Table 1
25	Guide bearing	Compound material, high nickel iron
26	Bottom slide bearing	Compound material, high nickel iron
27	Counter Shaft	316, 17-4 PH
28	Spiral Wound Gasket	316+GRAF.
	Drain valve assembly (Optional)	304

Notes:

- Optional materials are available, consult the factory
- Valve internals are supplied to equivalent ASTM/JIS/DIN/GB equivalent
- NACE certification is available.

DIMENSIONS AND WEIGHTS

WITH PNEUMATIC ACTUATOR

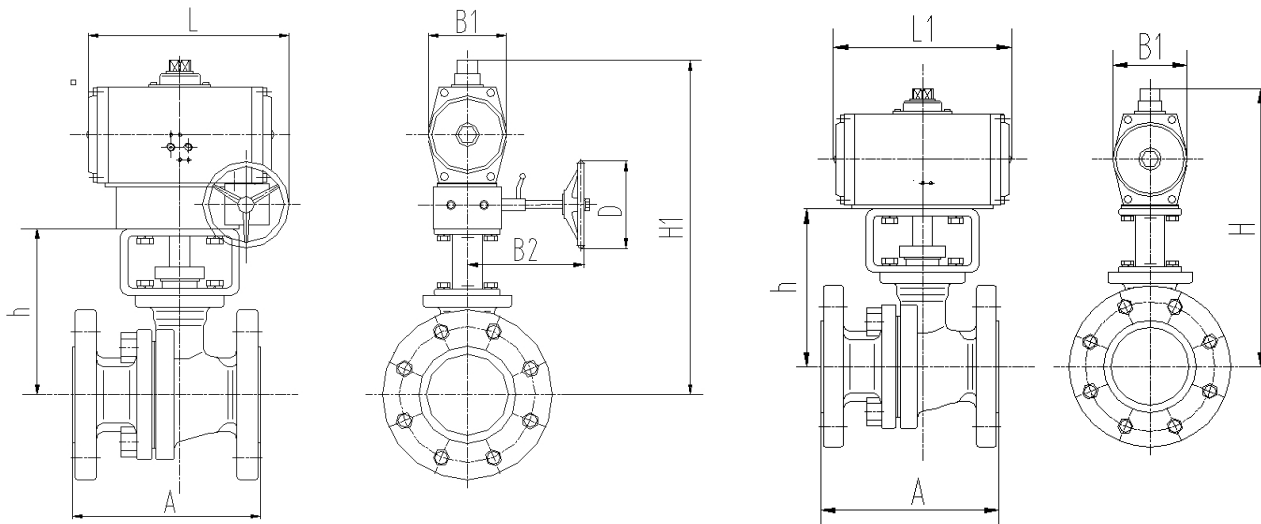


Figure 5: Overall Drawing With and Without Handwheel For 1/2" DN15~1.5"DN40

Table 5.1: Dimensions Valve Size $\leq 1.5"$ (DN40), Class 150 PN16

Valve Size DN / inch	Actuator	A		h		B1		B2		D		H		L1		H1		L		With handwheel		No handwheel	
		mm	inch	mm	inch	mm	inch	mm	inch	mm	inch	mm	inch	mm	inch	mm	inch	mm	inch	kg	lb.	kg	lb.
DN15 1/2"	RB63-DA	108	4.25	91	3.6	83	3.3	135	5.3	140	5.5	211	8.3	180	7.1	317	12.5	202	8.0	6.8	15	4.4	10
	RB80-SR					102	4.0	155	6.1	160	6.3	221	8.7	236	9.3	348	13.7	251	9.9	12.8	28	8.9	20
DN20 3/4"	RB63-DA	117	4.62	101	4.0	83	3.3	135	5.3	140	5.5	221	8.7	180	7.1	327	12.9	202	8.0	7.5	17	5.1	11
	RB80-SR					102	4.0	155	6.1	160	6.3	231	9.1	236	9.3	358	14.1	251	9.9	13.5	30	9.8	22
DN25 1"	RB63-DA	127	5.00	102	4.0	83	3.3	135	5.3	140	5.5	274	10.8	180	7.1	328	12.9	202	8.0	9.3	20	6.9	15
	RB80-SR					102	4.0	155	6.1	160	6.3	284	11.2	236	9.3	359	14.1	251	9.9	14.5	32	10.4	23
DN32 1.25"	RB80-DA	140	5.50	137	5.4	102	4.0	155	6.1	160	6.3	281	11.1	236	9.3	394	15.5	251	9.9	17.5	39	13	29
	RB100-SR					130	5.1	155	6.1	160	6.3	319	12.6	272	10.7	432	17.0	269	10.6	19.6	43	15.1	33
DN40 1.5"	RB80-DA	165	6.50	137	5.4	102	4.0	155	6.1	160	6.3	275	10.8	236	9.3	394	15.5	251	9.9	17.6	39	13.8	30
	RB125-SR					150	5.9	190	7.5	295	11.6	333	13.1	340	13.4	480	18.9	392	15.4	32.3	71	24.3	53

Notes:

1. Dimensions are in mm
2. For alternate sizes and actuators not shown, consult the Factory

DIMENSIONS AND WEIGHTS

WITH PNEUMATIC ACTUATOR

Table 5.2: Dimensions Valve Size ≤ 1.5" (DN40), Class 300 PN40

Valve Size DN / inch	Actuator	A		h		B1		B2		D		H		L1		H1		L		With handwheel		No handwheel	
		mm	inch	mm	inch	mm	inch	mm	inch	mm	inch	mm	inch	mm	inch	mm	inch	mm	inch	kg	lb.	kg	lb.
DN15 1/2"	RB63-DA	140	5.50	101	4.0	83	3.3	135	5.3	140	5.5	235	9.3	180	7.1	327	12.9	202	8.0	8.7	19	5.8	13
	RB80-SR					102	4.0	155	6.1	160	6.3	245	9.6	236	9.3	358	14.1	251	9.9	12.1	27	7.6	17
DN20 3/4"	RB63-DA	152	6.00	113	4.4	83	3.3	135	5.3	140	5.5	248	9.8	180	7.1	339	13.3	202	8.0	9.7	21	7.8	17
	RB80-SR					102	4.0	155	6.1	160	6.3	258	10.2	236	9.3	370	14.6	251	9.9	13.4	29	8.9	20
DN25 1"	RB80-DA	165	6.50	145	5.7	102	4.0	155	6.1	160	6.3	276	10.9	236	9.3	402	15.8	251	9.9	14.2	31	9.7	21
	RB100-SR					130	5.1	155	6.1	160	6.3	314	12.4	272	10.7	440	17.3	269	10.6	16.9	37	12.4	27
DN32 1.25"	RB80-DA	178	7.00	136	5.4	102	4.0	155	6.1	160	6.3	284	11.2	236	9.3	393	15.5	251	9.9	17.2	38	12.7	28
	RB100-SR					130	5.1	155	6.1	160	6.3	322	12.7	272	10.7	431	17.0	269	10.6	19.9	44	15.4	34
DN40 1.5"	RB100-DA	190	7.50	175	6.9	130	5.1	155	6.1	160	6.3	348	13.7	272	10.7	470	18.5	269	10.6	20.8	46	16.3	36
	RB125-SR					150	5.9	190	7.5	295	11.6	370	14.6	340	13.4	518	20.4	392	15.4	33.3	73	25.3	56

Table 5.3: Dimensions Valve Size ≤ 1.5" (DN40), Class 400 PN64

Valve Size DN / inch	Actuator	A		h		B1		B2		D		H		L1		H1		L		With handwheel		No handwheel	
		mm	inch	mm	inch	mm	inch	mm	inch	mm	inch	mm	inch	mm	inch	mm	inch	mm	inch	kg	lb.	kg	lb.
DN15 1/2"	RB63-DA	165	6.50	101	4.0	102	4.0	155	6.1	160	6.3	246	9.7	180	7.1	358	14.1	251	9.9	11.6	26	6.6	15
	RB80-SR					102	4.0	155	6.1	160	6.3	256	10.1	236	9.3	358	14.1	251	9.9	12.4	27	7.9	17
DN20 3/4"	RB63-DA	190	7.50	113	4.4	83	3.3	135	5.3	140	5.5	247	9.7	180	7.1	339	13.3	202	8.0	10	22	8.1	18
	RB80-SR					102	4.0	155	6.1	160	6.3	257	10.1	236	9.3	370	14.6	251	9.9	13.5	30	9	20
DN25 1"	RB80-DA	216	8.50	140	5.5	102	4.0	155	6.1	160	6.3	276	10.9	236	9.3	397	15.6	251	9.9	14.5	32	10	22
	RB100-SR					130	5.1	155	6.1	160	6.3	314	12.4	272	10.7	435	17.1	269	10.6	17.2	38	12.7	28
DN32 1.25"	RB80-DA	229	9.00	136	5.4	102	4.0	155	6.1	160	6.3	278	10.9	236	9.3	393	15.5	251	9.9	18.5	41	14	31
	RB100-SR					130	5.1	155	6.1	160	6.3	316	12.4	272	10.7	431	17.0	269	10.6	21.2	47	16.7	37
DN40 1.5"	RB100-DA	241	9.50	175	6.9	130	5.1	155	6.1	160	6.3	348	13.7	272	10.7	470	18.5	269	10.6	25.3	56	20.8	46
	RB125-SR					150	5.9	190	7.5	295	11.6	370	14.6	340	13.4	518	20.4	392	15.4	38	84	30	66

Notes:

1. See Figure 5 for dimensions
2. For alternate sizes and actuators not shown, consult the Factory

DIMENSIONS AND WEIGHTS

WITH PNEUMATIC ACTUATOR

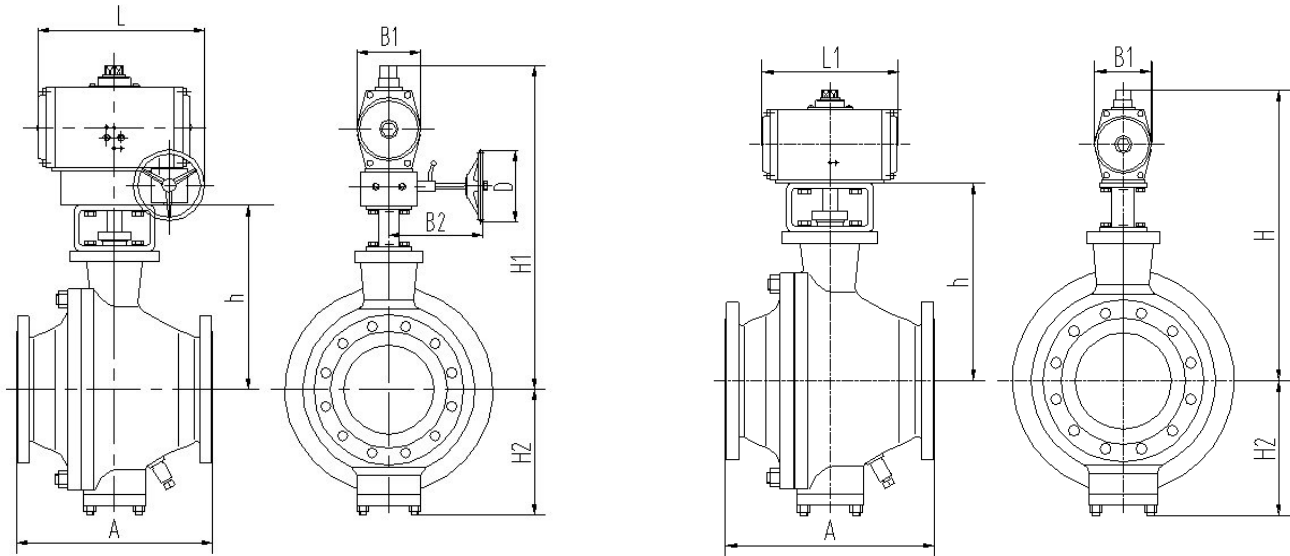


Figure 6: Overall Drawing With and Without Handwheel For 2" DN50~16" DN400

Table 6.1: Dimensions Valve Size 2" (DN50) ~ 16" (DN400), Class 150

Valve Size DN / inch	Actuator	A		h		H2		B1		B2		D		H		L1		H1		L		With handwheel		No handwheel	
		mm	inch	mm	inch	mm	inch	mm	inch	mm	inch	mm	inch	mm	inch	mm	inch	mm	inch	mm	inch	kg	lb.	kg	lb.
DN50	RB100-DA	178	7.00	199	7.8	95	3.7	130	5.1	155	6.1	160	6.3	376	14.8	272	10.7	494	19.4	269	10.6	50.7	127	46.2	116
	RB125-SR							150	5.9	190	7.5	295	11.6	405	15.9	340	13.4	542	21.3	392	15.4	63.2	158	55.2	138
DN65	RB125-DA	191	7.50	223	8.8	110	4.3	150	5.9	190	7.5	295	11.6	414	16.3	340	13.4	567	22.3	392	15.4	69.7	174	61.7	154
	RB160-SR							193	7.6	190	7.5	295	11.6	459	18.1	452	17.8	612	24.1	448	17.6	84.6	212	76.6	192
DN80	RB125-DA	203	8.00	271	10.7	129	5.1	150	5.9	190	7.5	295	11.6	469	18.5	340	13.4	614	24.2	392	15.4	76.3	191	68.3	171
	RB160-SR							193	7.6	190	7.5	295	11.6	520	20.5	452	17.8	659	25.9	448	17.6	90.3	226	82.3	206
DN100	RB160-DA	229	9.00	283	11.1	150	5.9	193	7.6	190	7.5	295	11.6	526	20.7	452	17.8	671	26.4	448	17.6	122	304	114	284
	RB160-SR							193	7.6	190	7.5	295	11.6	526	20.7	452	17.8	671	26.4	448	17.6	125	313	117	293
DN125	RB160-DA	356	14.00	310	12.2	189	7.4	193	7.6	190	7.5	295	11.6	545	21.5	452	17.8	698	27.5	448	17.6	140	350	132	330
	RB254-SR							290	11.4	292	11.5	450	17.7	670	26.4	695	27.4	899	35.4	699	27.5	223	558	174	435
DN150	RB200-DA	394	15.50	390	15.4	214	8.4	220	8.7	230	9.1	340	13.4	676	26.6	570	22.4	857	33.7	552	21.7	273	683	258	645
	RB200-SR							200	7.9	230	9.1	340	13.4	676	26.6	570	22.4	857	33.7	552	21.7	273	683	267	668
	RB254-DA							290	11.4	292	11.5	450	17.7	750	29.5	695	27.4	979	38.5	699	27.5	351	878	302	755
	RB254-SR							290	11.4	292	11.5	450	17.7	750	29.5	695	27.4	979	38.5	699	27.5	351	878	302	755
	RB280-SR							300	11.8	292	11.5	450	17.7	750	29.5	706	27.8	979	38.5	704	27.7	417	1043	368	920
	RB300-DA							324	12.8	292	11.5	450	17.7	770	30.3	792	31.2	999	39.3	747	29.4	459	1148	410	1025
	RB300-SR							324	12.8	292	11.5	450	17.7	770	30.3	792	31.2	999	39.3	747	29.4	459	1148	410	1025
	RB350-DA							388	15.3	400	15.7	450	17.7	830	32.7	850	33.5	1108	43.6	836	32.9	525	1313	443	1108
DN200	RB350-SR	388	15.3	400	15.7	450	17.7	830	32.7	850	33.5	1108	43.6	836	32.9	525	1313	443	1108						
	RB200-DA	220	8.7	230	9.1	340	13.4	707	27.8	570	22.4	904	35.6	552	21.7	283	708	268	670						
	RB254-SR	290	11.4	292	11.5	450	17.7	830	32.7	695	27.4	1026	40.4	699	27.5	370	925	321	803						
	RB280-SR	300	11.8	292	11.5	450	17.7	830	32.7	706	27.8	1026	40.4	704	27.7	384	960	335	838						
DN250	RB254-DA	290	11.4	292	11.5	450	17.7	850	33.5	695	27.4	1060	41.7	699	27.5	415	1038	366	915						
	RB300-SR	324	12.8	292	11.5	450	17.7	870	34.3	792	31.2	1080	42.5	747	29.4	459	1148	410	1025						
	RB280-DA	300	11.8	292	11.5	450	17.7	850	33.5	706	27.8	1060	41.7	704	27.7	423	1058	374	935						
DN300	RB254-DA	290	11.4	292	11.5	450	17.7	845	33.3	695	27.4	984	38.7	699	27.5	625	1563	576	1440						
	RB350-SR	610	24.00	395	15.6	350	13.8	388	15.3	400	15.7	450	17.7	835	32.9	850	33.5	1113	43.8	836	32.9	902	2255	820	2050
DN350	RB280-DA	300	11.8	292	11.5	450	17.7	845	33.3	706	27.8	984	38.7	704	27.7	643	1608	594	1485						
	RB300-DA	324	12.8	292	11.5	450	17.7	975	38.4	792	31.2	1029	40.5	747	29.4	1271	3178	1222	3055						
DN400	RB350-SR	686	27.00	420	16.5	398	15.7	388	15.3	400	15.7	450	17.7	1029	40.5	850	33.5	1138	44.8	836	32.9	1429	3573	1347	3368
	RB400-DA	762	30.00	483	19.0	460	18.1	505	19.9	400	15.7	450	17.7	990	39.0	918	36.1	1321	52.0	747	29.4	1924	4810	1842	4605
	RB530-SR							660	26.0	508	20.0	550	21.7	1470	57.9	1550	61.0	1714	67.5	1311	51.6	2803	7008	2663	6658

Notes:

- For alternate sizes and actuators not shown, consult the Factory

DIMENSIONS AND WEIGHTS

WITH PNEUMATIC ACTUATOR

See Figure 6 for Overall Drawing With and Without Handwheel For 2" DN50~16" DN400

Table 6.2: Dimensions Valve Size 2" (DN50) ~ 16" (DN400), Class 300 PN40

Valve Size DN / inch	Actuator	A		h		H2		B1		B2		D		H		L1		H1		L		With handwheel		No handwheel	
		mm	inch	mm	inch	mm	inch	mm	inch	mm	inch	mm	inch	mm	inch	mm	inch	mm	inch	mm	inch	kg	lb.	kg	lb.
DN50	RB100-DA	216	8.50	199	7.8	95	3.7	130	5.1	155	6.1	160	6.3	376	14.8	272	10.7	494	19.4	269	10.6	54	118	49	108
	RB125-SR							150	5.9	190	7.5	295	11.6	398	15.7	340	13.4	542	21.3	392	15.4	66	146	58	128
DN65	RB125-DA	242	9.50	219	8.6	120	4.7	150	5.9	190	7.5	295	11.6	409	16.1	340	13.4	562	22.1	392	15.4	78	171	70	154
	RB160-SR							193	7.6	190	7.5	295	11.6	454	17.9	452	17.8	607	23.9	448	17.6	92	202	84	185
DN80	RB160-DA	283	11.12	271	10.7	135	5.3	193	7.6	190	7.5	295	11.6	514	20.2	452	17.8	659	25.9	448	17.6	100	219	92	201
	RB200-SR							220	8.7	230	9.1	340	13.4	549	21.6	570	22.4	738	29.1	552	21.7	128	281	113	248
DN100	RB200-DA	305	12.00	283	11.1	169	6.7	220	8.7	230	9.1	340	13.4	561	22.1	570	22.4	750	29.5	552	21.7	128	281	113	248
	RB200-SR							220	8.7	230	9.1	340	13.4	561	22.1	570	22.4	750	29.5	552	21.7	128	281	113	248
DN125	RB200-DA	366	14.41	283	11.1	189	7.4	220	8.7	230	9.1	340	13.4	553	21.8	570	22.4	750	29.5	552	21.7	161	354	146	321
	RB254-SR							290	11.4	292	11.5	450	17.7	643	25.3	695	27.4	872	34.3	699	27.5	235	517	186	409
DN150	RB200-DA	403	15.87	390	15.4	214	8.4	220	8.7	230	9.1	340	13.4	670	26.4	570	22.4	857	33.7	552	21.7	328	722	313	689
	RB200-SR							220	8.7	230	9.1	340	13.4	670	26.4	570	22.4	857	33.7	552	21.7	328	722	313	689
	RB254-DA							290	11.4	292	11.5	450	17.7	760	29.9	695	27.4	979	38.5	699	27.5	415	913	366	805
	RB254-SR							290	11.4	292	11.5	450	17.7	760	29.9	695	27.4	979	38.5	699	27.5	415	913	366	805
	RB280-SR							300	11.8	292	11.5	450	17.7	750	29.5	706	27.8	979	38.5	704	27.7	467	1027	418	920
	RB300-DA							324	12.8	292	11.5	450	17.7	770	30.3	792	31.2	999	39.3	747	29.4	511	1124	462	1016
	RB300-SR							324	12.8	292	11.5	450	17.7	770	30.3	792	31.2	999	39.3	747	29.4	511	1124	462	1016
	RB350-DA							388	15.3	400	15.7	450	17.7	830	32.7	850	33.5	1108	43.6	836	32.9	585	1287	503	1107
	RB350-SR							388	15.3	400	15.7	450	17.7	830	32.7	850	33.5	1108	43.6	836	32.9	585	1287	503	1107
DN200	RB254-DA	502	19.75	437	17.2	293	11.5	290	11.4	292	11.5	450	17.7	830	32.7	695	27.4	1026	40.4	698	27.5	415	913	366	805
	RB254-SR							290	11.4	292	11.5	450	17.7	830	32.7	695	27.4	1026	40.4	698	27.5	430	946	381	838
	RB280-DA							300	11.8	292	11.5	450	17.7	830	32.7	706	27.8	1026	40.4	704	27.7	423	930	374	822
	RB280-SR							300	11.8	292	11.5	450	17.7	830	32.7	706	27.8	1026	40.4	704	27.7	444	977	395	869
DN250	RB254-DA	568	22.37	471	18.5	335	13.2	290	11.4	292	11.5	450	17.7	850	33.5	695	27.4	1060	41.7	698	27.5	575	1265	526	1157
	RB300-SR							324	12.8	292	11.5	450	17.7	870	34.3	792	31.2	1080	42.5	747	29.4	619	1362	570	1254
	RB280-DA							300	11.8	292	11.5	450	17.7	850	33.5	706	27.8	1060	41.7	704	27.7	583	1282	534	1174
DN300	RB300-DA	648	25.50	395	15.6	372	14.6	324	12.8	292	11.5	450	17.7	950	37.4	742	29.2	1004	39.5	747	29.4	739	1626	690	1518
	RB350-SR							388	15.3	400	15.7	450	17.7	1004	39.5	860	33.9	1113	43.8	836	32.9	896	1972	767	1686
	RB350-DA							388	15.3	400	15.7	450	17.7	1004	39.5	860	33.9	1113	43.8	836	32.9	849	1867	814	1792
DN350	RB350-DA	762	30.00	420	16.5	398	15.7	388	15.3	400	15.7	450	17.7	975	38.4	860	33.9	1138	44.8	836	32.9	1470	3233	1388	3053
	RB350-SR							388	15.3	400	15.7	450	17.7	1029	40.5	860	33.9	1138	44.8	836	32.9	1517	3338	1435	3158
DN400	RB450-DA	838	33.00	483	19.0	460	18.1	566	22.3	400	15.7	450	17.7	1106	43.5	754	29.7	1371	54.0	773	30.4	1937	4261	1855	4081
	RB530-SR							660	26.0	508	20.0	550	21.7	1465	57.7	1466	57.7	1714	67.5	1311	51.6	2220	4884	2080	4576

Notes:

- For alternate sizes and actuators not shown, consult the Factory

DIMENSIONS AND WEIGHTS

WITH PNEUMATIC ACTUATOR

Figure 6: Overall Drawing With and Without Handwheel For 2" DN50~16" DN400

Table 6.2: Dimensions Valve Size 2" (DN50) ~ 16" (DN400), Class 400

Valve Size DN / inch	Actuator	A		h		H2		B1		B2		D		H		L1		H1		L		With handwheel		No handwheel	
		mm	inch	mm	inch	mm	inch	mm	inch	mm	inch	mm	inch	mm	inch	mm	inch	mm	inch	mm	inch	kg	lb.	kg	lb.
DN50 2"	RB125-DA	292	11.50	199	7.8	95	3.7	150	5.9	190	7.5	295	11.6	398	15.7	340	13.4	542	21.3	391	15.4	66	146	58	128
	RB160-SR							193	7.6	190	7.5	295	11.6	443	17.4	452	17.8	587	23.1	447	17.6	80	177	72	159
DN65 2.5"	RB125-DA	330	13.00	219	8.6	120	4.7	150	5.9	190	7.5	295	11.6	409	16.1	340	13.4	562	22.1	391	15.4	83	182	75	164
	RB160-SR							193	7.6	190	7.5	295	11.6	454	17.9	452	17.8	607	23.9	447	17.6	90	198	82	181
DN80 3"	RB160-DA	356	14.00	271	10.7	135	5.3	193	7.6	190	7.5	295	11.6	514	20.2	452	17.8	659	25.9	447	17.6	103	226	95	208
	RB200-SR							220	8.7	230	9.1	340	13.4	549	21.6	570	22.4	738	29.1	552	21.7	144	317	129	284
	RB254-SR							290	11.4	292	11.5	450	17.7	631	24.8	695	27.4	860	33.9	698	27.5	218	480	169	372
DN100 4"	RB200-DA	406	16.00	283	11.1	169	6.7	220	8.7	230	9.1	340	13.4	561	22.1	570	22.4	750	29.5	552	21.7	183	403	168	370
	RB200-SR							220	8.7	230	9.1	340	13.4	561	22.1	570	22.4	750	29.5	552	21.7	192	422	177	389
	RB254-SR							290	11.4	292	11.5	450	17.7	643	25.3	695	27.4	872	34.3	698	27.5	261	574	212	466
DN125 5"	RB200-DA	465	18.31	283	11.1	189	7.4	220	8.7	230	9.1	340	13.4	553	21.8	570	22.4	750	29.5	552	21.7	304	669	289	636
	RB254-SR							290	11.4	292	11.5	450	17.7	643	25.3	695	27.4	872	34.3	698	27.5	223	491	174	383
DN150 6"	RB254-DA	495	19.50	390	15.4	214	8.4	290	11.4	292	11.5	450	17.7	760	29.9	695	27.4	979	38.5	698	27.5	446	981	397	873
	RB254-SR							290	11.4	292	11.5	450	17.7	760	29.9	695	27.4	979	38.5	698	27.5	461	1014	412	906
	RB280-SR							300	11.8	292	11.5	450	17.7	750	29.5	706	27.8	979	38.5	704	27.7	517	1137	468	1030
	RB300-DA							324	12.8	292	11.5	450	17.7	770	30.3	792	31.2	999	39.3	747	29.4	551	1212	502	1104
	RB300-SR							324	12.8	292	11.5	450	17.7	770	30.3	792	31.2	999	39.3	747	29.4	551	1212	502	1104
	RB350-DA							388	15.3	400	15.7	450	17.7	830	32.7	850	33.5	1108	43.6	836	32.9	645	1419	563	1239
	RB350-SR							388	15.3	400	15.7	450	17.7	830	32.7	850	33.5	1108	43.6	836	32.9	645	1419	563	1239
DN200 8"	RB254-DA	597	23.50	437	17.2	293	11.5	290	11.4	292	11.5	450	17.7	797	31.4	695	27.4	1026	40.4	698	27.5	555	1221	506	1113
	RB300-SR							324	12.8	292	11.5	450	17.7	817	32.2	792	31.2	1046	41.2	747	29.4	595	1309	546	1201
	RB280-DA							300	11.8	292	11.5	450	17.7	797	31.4	706	27.8	1026	40.4	704	27.7	575	1265	526	1157
DN250 10"	RB254-DA	673	26.50	471	18.5	335	13.2	290	11.4	292	11.5	450	17.7	831	32.7	695	27.4	1060	41.7	698	27.5	715	1573	666	1465
	RB350-SR							388	15.3	400	15.7	450	17.7	911	35.9	850	33.5	1189	46.8	836	32.9	896	1971	814	1791
	RB300-DA							324	12.8	292	11.5	450	17.7	851	33.5	792	31.2	1080	42.5	747	29.4	739	1626	690	1518
DN300 12"	RB350-DA	762	30.00	395	15.6	372	14.6	388	15.3	400	15.7	450	17.7	835	32.9	850	33.5	1113	43.8	836	32.9	1109	2439	1027	2258
	RB300-SR							324	12.8	292	11.5	450	17.7	775	30.5	792	31.2	1004	39.5	747	29.4	1029	2264	980	2156
DN350 14"	RB350-DA	762	30.00	420	16.5	398	15.7	388	15.3	400	15.7	450	17.7	975	38.4	850	33.5	1138	44.8	836	32.9	1529	3363	1447	3182
	RB350-SR							388	15.3	400	15.7	450	17.7	1029	40.5	850	33.5	1346	53.0	836	32.9	1576	3468	1494	3288
DN400 16"	RB530-DA	902	35.50	483	19.0	460	18.1	660	26.0	508	20.0	550	21.7	1106	43.5	754	29.7	1714	67.5	1062	41.8	2254	4959	2114	4651
	RB600-SR							730	28.7	600	23.6	700	27.6	1465	57.7	1466	57.7	1894	74.6	1407	55.4	2433	5353	2263	4979

Notes:

- For alternate sizes and actuators not shown, consult the Factory

DIMENSIONS

WITHOUT ACTUATOR

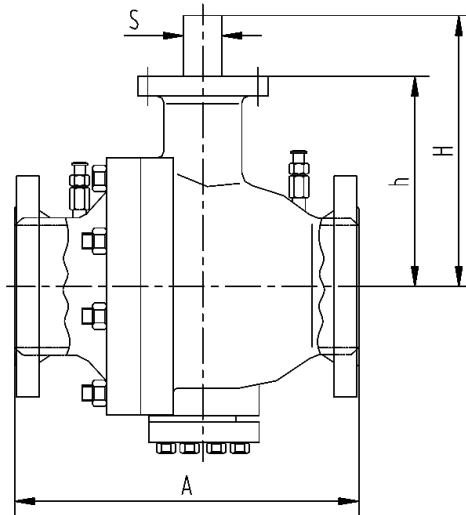


Figure 7: Overall Drawing Without Actuator, 18" DN450 ~ 24" DN600

Table 7: Dimensions Valve Size 2" (DN50) ~ 16" (DN400), Class 400

Rated pressure : Class 150, PN16							
Valve Size DN / inch	Actuator	A		h		H	
		mm	inch	mm	inch	mm	inch
DN450 / 18"	—	864	24.00	540	21.3	630	24.8
DN500 / 20"	—	914	36.00	590	23.2	680	26.8
DN600 / 24"	—	1067	42.00	730	28.7	830	32.7
Rated pressure : Class 300, PN25, PN40							
Valve Size DN / inch	Actuator	A		h		H	
		mm	inch	mm	inch	mm	inch
DN450 / 18"	—	914	36.00	540	21.3	630	24.8
DN500 / 20"	—	991	39.00	590	23.2	690	27.2
DN600 / 24"	—	1143	45.00	730	28.7	830	32.7
Rated pressure : Class 400, PN64							
Valve Size DN / inch	Actuator	A		h		H	
		mm	inch	mm	inch	mm	inch
DN450 / 18"	—	978	38.50	540	21.3	630	24.8
DN500 / 20"	—	1054	41.50	590	23.2	690	27.2
DN600 / 24"	—	1232	48.50	730	28.7	830	32.7

Notes:

1. Valves can be supplied with various actuator mounting in accordance with ISO 5211 or custom designed
2. For valve weights, refer to WZI proposal or consult the factory
3. For alternate sizes and actuators not shown, consult the Factory

WHO WE ARE

WZI Flow Control, Ltd., a subsidiary of WuZhong Instrument Company, Ltd., began business in 1959. As China's largest control valve manufacturer, WZI has a state of the art 2.8M ft2 production, foundry and corporate office campus. With over 1000 employees, WZI is expanding globally with increased manu-facturing, sales and service capabilities to better serve our rapidly growing global customer base.

As a member of the highly acclaimed China Automation Group (www.cag.com.hk), WZI has successfully supplied over 1 million valves for the global market. With our 100% Testing and Serialization Program, WZI prides itself on our high quality, competitively priced products with superior delivery from our new sales and service center located in Houston, Texas. Our Southern California office designs new products and makes continuous improvements to our broad existing product offering.

LET'S WORK TOGETHER

Contact US



+1.832.328.7883



Sales@WZIFlowControl.com

Location

USA Headquarters

5656 N. Sam Houston Pkwy E.,

Suite 150 Houston, Texas 77032 USA

www.WZIFlowControl.com

WE'RE QUALIFIED

As a global manufacturing company, WZI Flow Control verifies that we are operating in full compliance with this partial list of industry standards. Our compliance includes additional standards not shown here. Please contact the factory for additional details.

ISO 9001

API Spec Q1

API 6DSS

API 607, 7th Edition

ISO 14001

API 6A

API 17D

API 6FA, 3rd Edition

OHSAS 18001

API 6D

API 609 Cat B

SIL-capable

QUALITY
TRUST
INTEGRITY

Disclaimer: The information and specifications contained in this literature are believed to be accurate, they are supplied for information purposes and should not be considered certified or a guaranty of satisfactory results by reliance thereon. Nothing contained in this literature is to be construed as a warranty or guaranty, express or implied. Because WZI Flow Control is continually improving our product, the specifications, dimensions, and information contained in this literature are subject to change without notice. Should any questions arise concerning these provisions, the purchaser or user should contact WZI Flow Control at the contact information given.

© 2020 WZI Flow Control, LTD. All rights reserved.